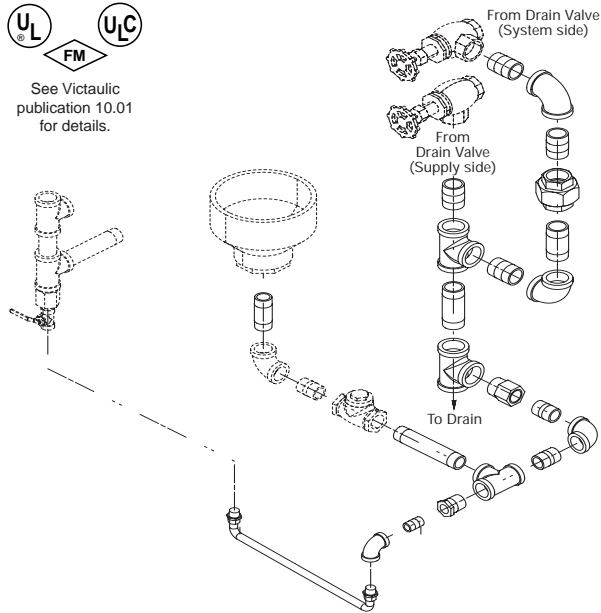


Fire Protection Devices Drain Connection Kit

PRODUCT DESCRIPTION



See Victaulic publication 10.01 for details.

The Victaulic® Devices Drain Connection Kit supplies an easy way to inter-connect drain outlets on Victaulic Series 751 Alarm Valves, Series 756 Dry Valves, Series 758 Deluge Valves and Series 758 Preaction Valves to a common drain connection. The kits contain the necessary parts cut to length, in addition to those supplied with standard trim packages, to complete this assembly. Certain components of standard trim packages may be relocated (see drawings) to accommodate assembly.

Typical (1½" and 2" Series 756/Series 758)
See pages 2 and 3 for details

INSTALLATION

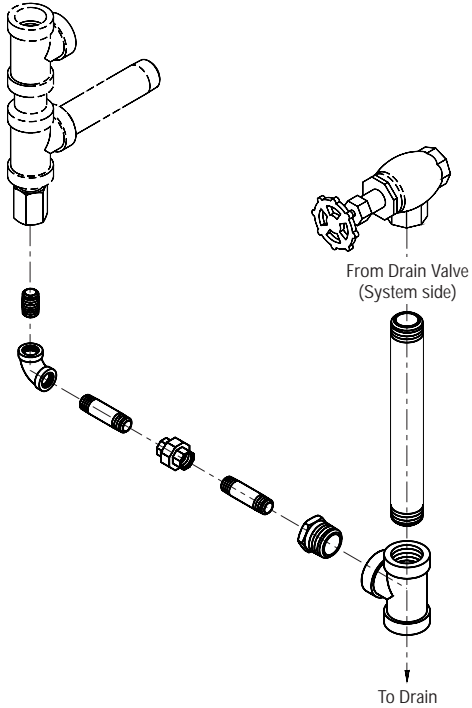
! WARNING	
	<ul style="list-style-type: none"> Always read and understand all installation instructions before attempting assembly of Victaulic piping products.
<p>Failure to do so could result in serious personal injury, property damage, joint leakage or joint separation.</p>	

Installation is achieved with the standard threaded or grooved components in accordance with drawings.

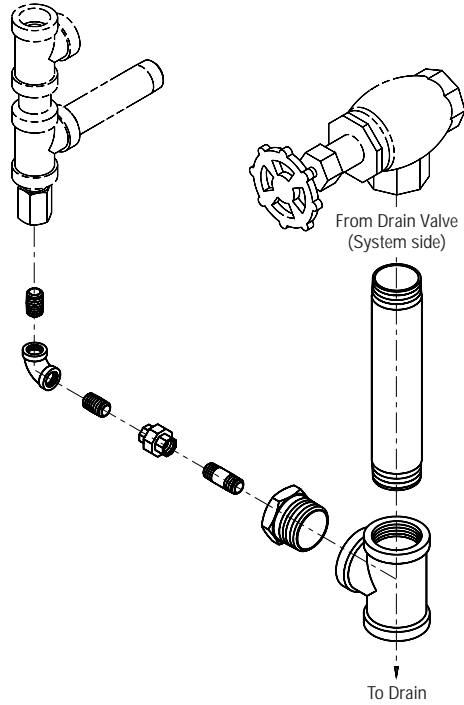
SERIES 751 ALARM VALVE

NOTES:

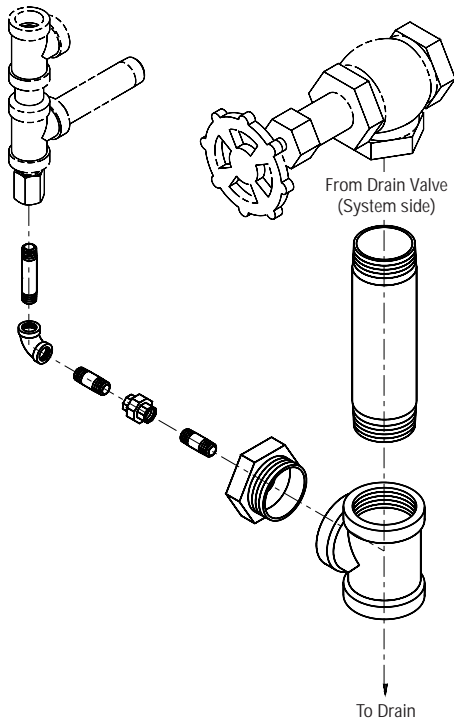
1. Variations in the effective length of threaded products and threaded joints may cause unacceptable alignment or fit-up within the piping. Substitution of nipples of the same material and pressure rating but of a different length, to correct alignment of fit-up, is acceptable provided it does not interfere with another product.



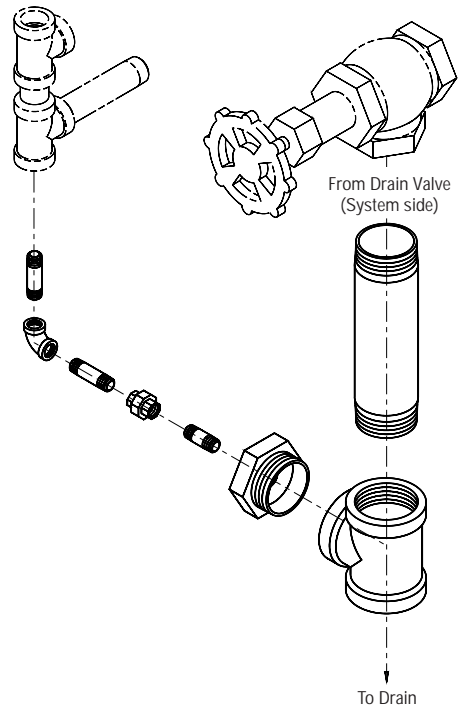
1½" and 2" Drain Connection Kit



2½", 3" and 76,1 mm Drain Connection Kit



4" Drain Connection Kit

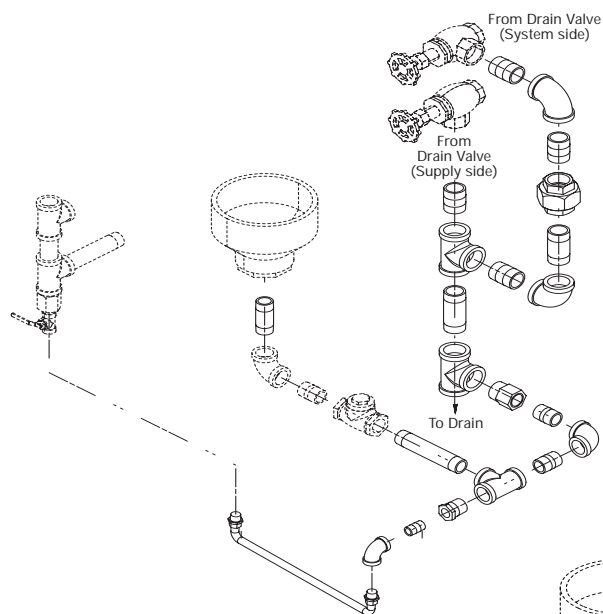


6" and 165,1 mm Drain Connection Kit

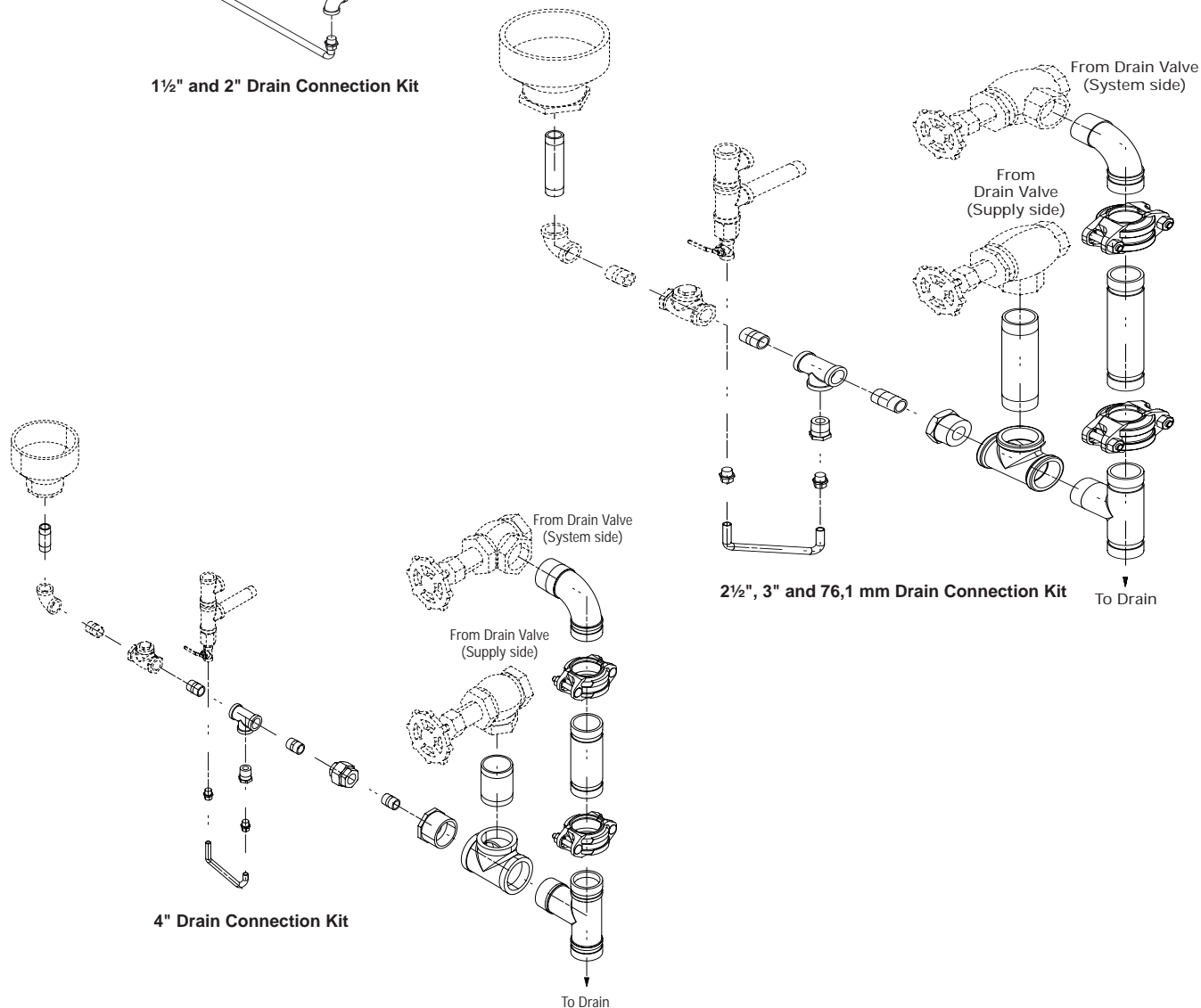
SERIES 756 DRY VALVE, SERIES 758 DELUGE VALVE & SERIES 758 PREACTION VALVE

NOTES:

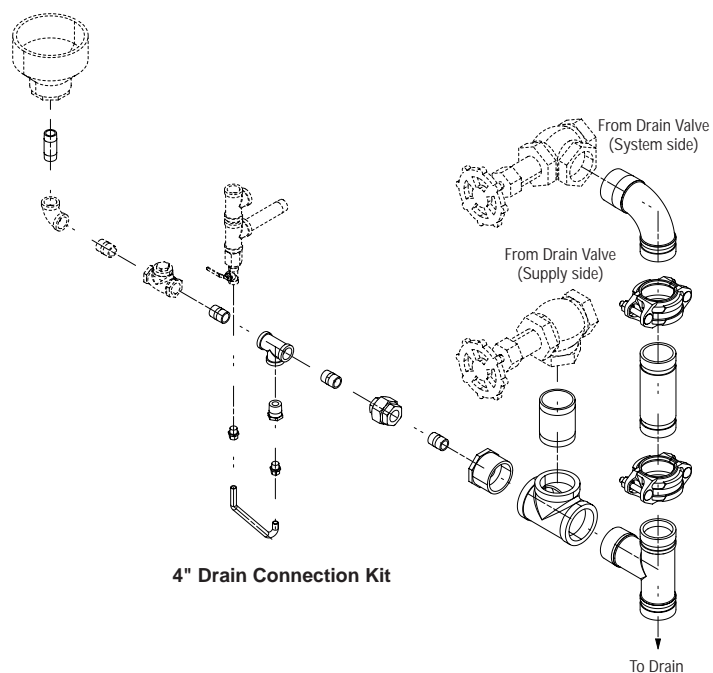
1. Variations in the effective length of threaded products and threaded joints may cause unacceptable alignment or fit-up within the piping. Substitution of nipples of the same material and pressure rating but of a different length, to correct alignment of fit-up, is acceptable provided it does not interfere with another product.



1½" and 2" Drain Connection Kit

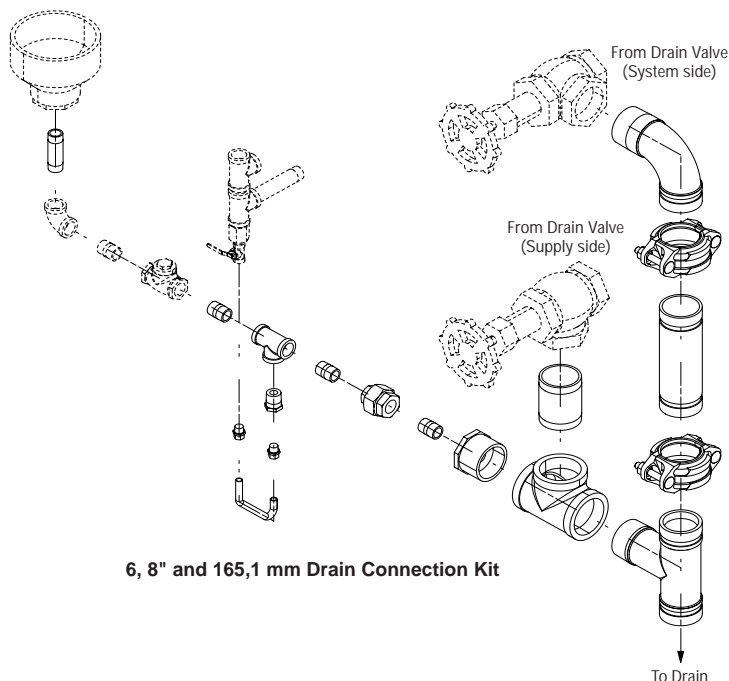


2½", 3" and 76,1 mm Drain Connection Kit



4" Drain Connection Kit

SERIES 756 DRY VALVE, SERIES 758 DELUGE VALVE & SERIES 758 PREACTION VALVE



NOTES:

1. Variations in the effective length of threaded products and threaded joints may cause unacceptable alignment or fit-up within the piping. Substitution of nipples of the same material and pressure rating but of a different length, to correct alignment of fit-up, is acceptable provided it does not interfere with another product.

MAINTENANCE

	<p>! WARNING</p> <ul style="list-style-type: none"> Depressurize and drain the piping system before attempting to install, remove, or adjust any Victaulic piping products. <p>Failure to do so could result in serious personal injury, property damage or valve leakage.</p>
--	--

	<p>! WARNING</p> <ul style="list-style-type: none"> Any system service that requires taking the control valve or alarm valve out of service may eliminate the fire protection provided by the system. Prior to servicing or testing the system notify the Authority Having Jurisdiction of the operation being performed. Consideration of a fire patrol should be given in the affected areas. <p>Failure to do so could result in serious personal injury or property damage.</p>
--	---

It is the owners responsibility to maintain the fire protection system in proper operating condition. The Victaulic Drain Kit and associated valve trim must be kept free of foreign matter, freezing conditions and any environmental condition that may impair its operation. The frequency of inspection can vary due to adverse environmental conditions such as corrosive water or atmosphere or working conditions around the Drain Kit and associated devices. Refer to NFPA instructions and the Victaulic Installation and Maintenance Instructions for suggested maintenance frequency. In addition, the Authority Having Jurisdiction may have additional test and maintenance requirements.

INSPECTIONS AND TESTS

<p style="text-align: center;">! CAUTION</p> <p>The owner is responsible for maintaining the wet system in proper operating condition.</p> <p>The Victaulic Drain Connection Kit must be kept free of foreign matter, corrosive atmospheres, freezing conditions, contaminated water supplies or any other condition that could impair the proper operation of the valve. It is important that the wet system be inspected and tested regularly. The frequency of inspection should be modified in the presence of any environmental conditions that could degrade the systems operating condition. Minimum requirements for test and inspections are outlined in the National Fire Protection Association Pamphlet that describes the care and maintenance of sprinkler systems. Additionally, the Authority Having Jurisdiction may have maintenance, inspection and test requirements that must be followed.</p>
--

This product shall be manufactured by Victaulic Company. All products to be installed in accordance with current Victaulic installation/assembly instructions. Victaulic reserves the right to change product specifications, designs and standard equipment without notice and without incurring obligations.