

Steel

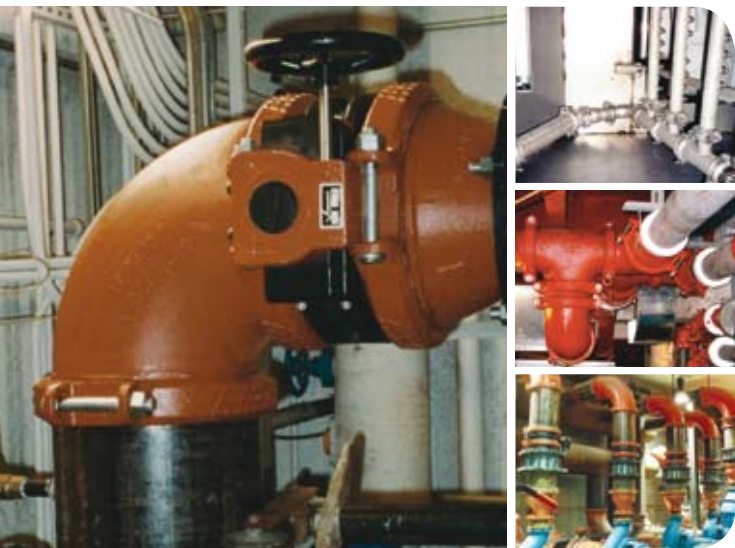


The Victaulic pipe joining system is the ideal choice for the Steel & Iron Industry because it offers the combined advantages of design versatility, highly reliable operation, and fast installation.

Get plants up and running sooner, reduce down time during retrofits, and make changes quickly and easily to adapt to changes in plant operations.



Piping. Systems. Solutions.



Best suited for the following system applications:

- Fuel Oil
- Atomizing Air
- Deionized Water
- Blowdown Piping
- Lubrication
- Degasser Cooling
- Hydraulic Return Lines
- Nitrogen
- Pulverized Coal
- Ladle Refining
- Coke Slurries
- Furnace Hoods
- Fire Protection
- Wastewater
- HVAC/Plumbing

COMPRESSED SCHEDULE

Compressed schedules have become the norm in construction. The Victaulic pipe joining solution, while inherently quicker to install, reduces field man-hours at every stage of a project. Victaulic will increase project efficiency from the start with value-added services offered from project pre-planning and drawing to jobsite project management. Victaulic will help your project be complete on time by:

- Reducing field man hours
- Helping you avoid liquidated damages
- Making you more competitive
- Reduce material handling costs

Visit www.compressedschedule.com for valuable tips and strategies for reducing man hours and compressing construction project schedules from experts throughout the construction industry.



SAFETY

Managing safety-related costs has become the number one priority for many construction professionals, for good reason. According to Construction Industry Institute (CII) estimates, the total cost of construction-related injuries exceeds \$17 billion annually. Owners realize that the costs of construction-related injuries is a major factor in their total cost of construction. Providing safety is a Victaulic core value. It means striving to provide the highest quality products that reduce or eliminate exposure.

Direct Benefits: The Victaulic grooved pipe joining method eliminates the safety concerns associated with open-flame pipe joining methods meaning workers are not exposed to dangerous fumes and no costly fire watch is necessary.

Indirect Benefits: Victaulic provides construction solutions that consistently cut down the number of man-hours needed per job. The shortened installation time – up to 3 to 5 times faster to install than welded, flanged or threaded systems reduces total exposure on the job.

Refer to PB-306 “Worksite Safety,” the brochure which explains how decreased exposure and increased safety impact the bottom line.





COUPLINGS AND FITTINGS

Victaulic couplings and fittings provide a simple, economical method for joining carbon steel, ductile iron and aluminum piping systems. Victaulic couplings and fittings provide designers with versatility not found in other pipe joining methods. Victaulic fittings are available in various styles of elbows, tees, crosses, wyes, adapters, nipples, caps, plugs and reducers.

- Available to join ¾"/20mm through 42"/1050mm piping systems
- Advanced Grooved System (AGS) couplings (rigid and flexible designs) and fittings available for 14–24"/350–600mm piping systems
- Vic-Flange adapters are available to directly incorporate grooved components into a piping system



VALVES

Victaulic valves are engineered and manufactured for dependable, trouble-free performance, superior flow control and durable, long-lasting reliability.

- A full line of butterfly, check, ball, triple service, circuit balancing and plug valves are available
- For 14–24"/350–600mm piping systems Victaulic offers AGS butterfly and check valves
- A variety of wear-resistant materials and coatings are available for specific piping application requirements



ACCESSORIES

Victaulic offers a complete line of accessories for equipment protection, special applications and flow measurement.

- Suction diffusers and strainers reduce maintenance downtime and allow easy access to the system
- For 14–24"/350–600mm piping systems Victaulic offers AGS products
- Expansion joints accommodate expansion and contraction to meet system requirements
- Flow measuring devices ensure flow requirements are met



HOLE CUT PRODUCTS

Victaulic hole cut products provide a fast, easy mid-pipe outlet that does not require welding.

- Gaskets are molded to conform to the O.D. of the pipe and are of a pressure responsive design
- Hole cut products are mounted to the pipe using either a locating collar or a toe and heel design and provide a smooth flow area
- Victaulic offers a line of easy to operate hole cutting tools



DEPEND-O-LOK SYSTEM

The design of the Depend-O-Lok couplings allows for out-of-round pipe – making it easier to install than competitive joining methods. Couplings can be designed to meet almost any application or service criteria and provides a reliable, economical alternative to traditional bolted sleeve-type couplings.

- Bolted Split-Sleeve Flexible Coupling (E x E) provides an unrestrained, flexible bottle-tight joint
- Bolted Split-Sleeve Restrained Flexible Coupling (F x F) provides a fully restrained pipe joint without external harnessing
- Bolted Split-Sleeve Expansion Coupling (F x E) provides for thermal expansion and contraction



GROOVED COPPER

Victaulic offers a cold formed roll grooved system that eliminates the need for soldering or brazing for safer more efficient installation.

- Complete line of couplings, fittings and valves for systems rated to 300 psi/2065 kPa
- Line of roll grooving tools available for on-site grooving
- Copper connection system joins 2–8"/50–200 mm



GROOVED STAINLESS STEEL

Victaulic provides a fast, easy and reliable method for joining Schedule 5S, 10S or 40S stainless steel pipe.

- Couplings available for rigid or flexible joints
- Fittings are available in Types 304 or 316 and ASTM A-403
- Grooved end butterfly, check and ball valves available to meet all flow control requirements



PLAIN END PIPING SYSTEM

The plain end piping method is ideal for maintenance and repairs as well as new systems such as roof drains, slurries and tailings.

- Designed for use on Schedule 40 steel pipe
- Coupling jaws conform to pipe and provide greater pipe contact for positive grip
- Complete line of couplings and fittings



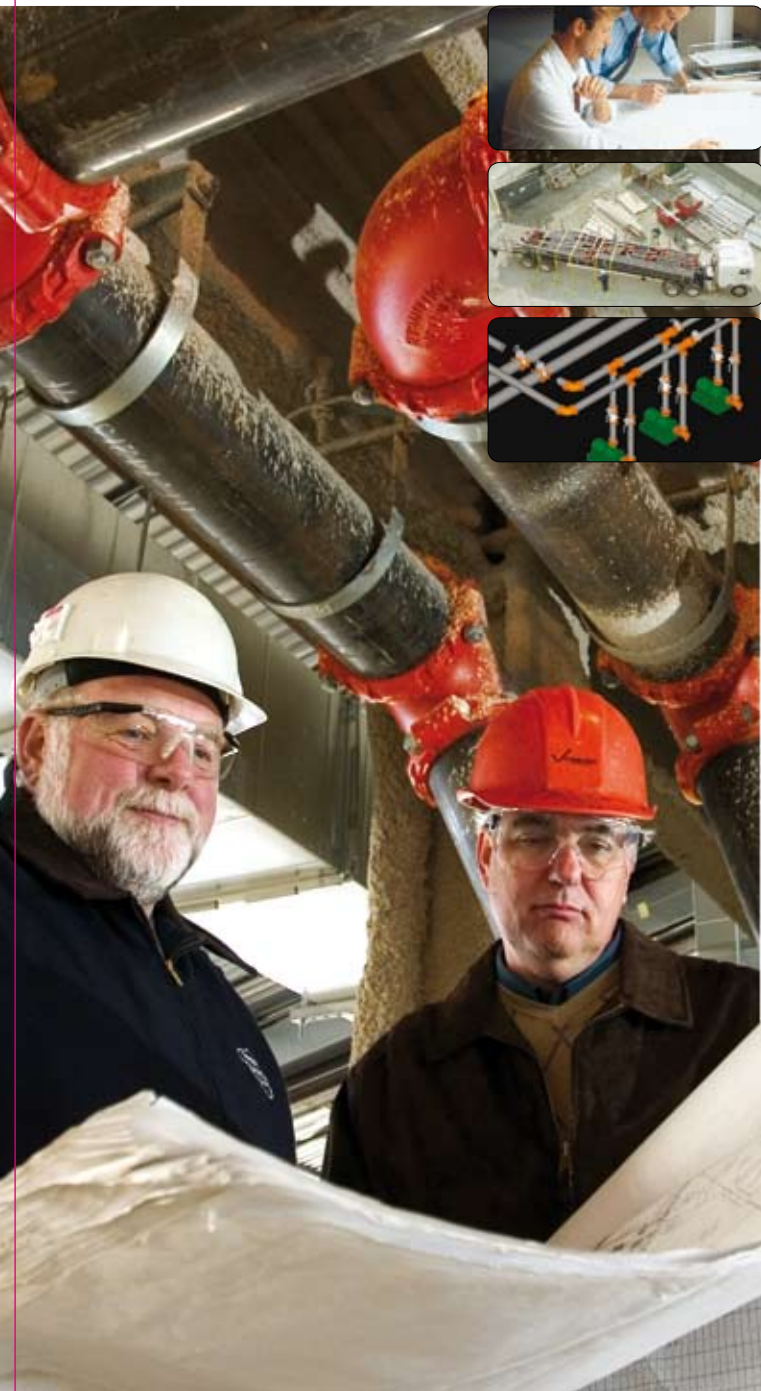
PIPE PREPARATION TOOLS

Victaulic is the leader in the development of roll and cut grooving tools. In addition to our extensive lines of grooving tools, Victaulic offers hole cutting tools, cut-off tools and pressing tools.

- Tools are available for use in the field, fabrication shop or groove-in-place
- Patented enhanced tracking rolls provide for hands free grooving
- Tools available for rental or purchase

Project management services

Construction Piping Services is with you every step of the way, offering project management services to assist with estimating through construction, ensuring the highest quality and most efficient implementation to save you time, money and worry.



PROVIDING FIRST-RATE VALUE ANALYSIS YOU CAN DEPEND ON:

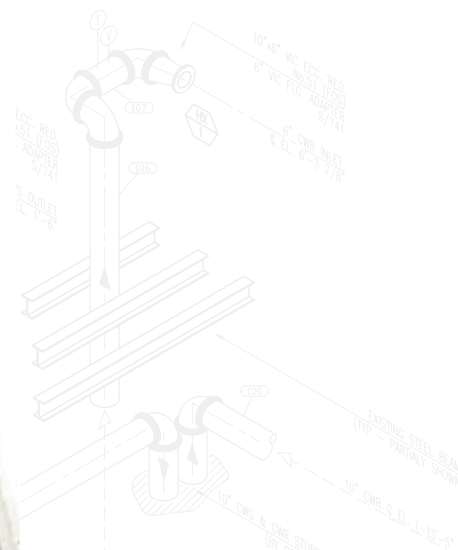
The Victaulic Estimating Department provides no-cost value analysis, specification updates, drawing quotations and equipment connection packages to help you save time on your next project.

ENSURING A SMOOTH, WORRY-FREE PROJECT IMPLEMENTATION:

The Victaulic Pre-Planning and Project Management Group offers optional, detailed drawing packages, which include review of drawings, specifications and vendors' submittals. In addition, Victaulic delivers the following value-added services to assist you with a smooth, worry-free project implementation: pipe cut sheets, project coordination, bag-and-tag service, advance ordering of Victaulic materials and field site visits.

SUPPLYING THE TECHNOLOGY YOU NEED TO DESIGN A VICTAULIC SYSTEM:

Our software solutions provide the greatest accuracy and reliability when drawing Victaulic products and are found in many of the most popular drawing software packages.



www.victaulic.com

The Victaulic website is an information resource that can help you with your piping projects. Among the many resources available at the site:

- Fully searchable product and project databases
- Free product submittals
- Free product literature
- Piping software demos and modules
- Information on new product innovations
- Support services, and more...



CONTACTING VICTAULIC

WORLD HEADQUARTERS

P.O. Box 31
Easton, PA 18044-0031 USA
4901 Kesslersville Road
Easton, PA 18040 USA

1-800-PICK-VIC
(1-800-742-5842)
1-610-559-3300
1-610-250-8817 (fax)
pickvic@victaulic.com

CANADA

123 Newkirk Road
Richmond Hill, ON L4C 3G5
905-884-7444
905-884-9774 (fax)
viccanada@victaulic.com

EUROPE

Prijkelstraat 36
9810 Nazareth, Belgium
32-9-381-15-00
32-9-380-44-38 (fax)
viceuro@victaulic.be

UNITED KINGDOM

Units B1 & B2, SG1 Industrial Park
Cockerell Close
Gunnels Wood Road
Stevenage
Hertfordshire, SG1 2NB (UK)
+44 (0) 1438 310 690
+44 (0) 1438 310 699 (fax)

CENTRAL AND SOUTH AMERICA

P.O. Box 31
Easton, PA 18044-0031 USA
4901 Kesslersville Road
Easton, PA 18040 USA
1-610-559-3300
1-610-559-3608 (fax)
vical@victaulic.com

ASIA PACIFIC

4/F, No. 321
Tian Yao Qiao Road
Shanghai 200030
China
+86-21-54253300
+86-21-54251820 (fax)
vicap@victaulic.com

MIDDLE EAST

P.O. Box 17683
Unit XB 8
Jebel Ali Free Zone
Dubai
United Arab Emirates
971-4-883-88-70
971-4-883-88-60 (fax)



WCAS-75GP8N