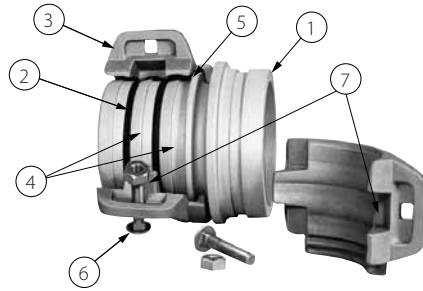


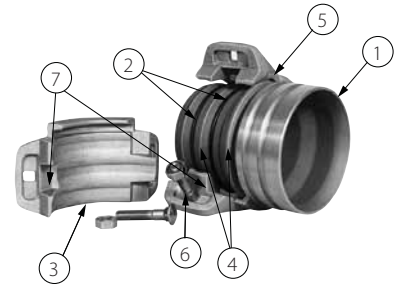
Victaulic® Hose Assembly Products

Victaulic, pioneer of the mechanical pipe joining system in 1925, is the leader in providing innovative hose assembly systems.

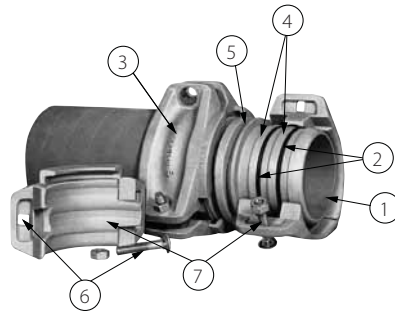
Victaulic Hose Assembly products provide a lightweight, easily installed connection for IPDS, TPT, FSSP, and RIFTS systems.



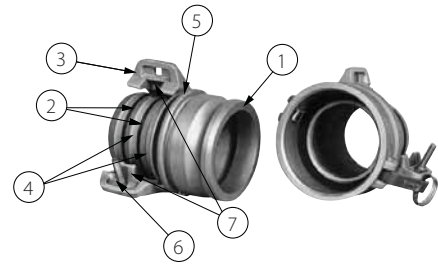
STYLES 470/480 HOSE NIPPLE ASSEMBLY GROOVED END



STYLES 471/481 HOSE NIPPLE ASSEMBLY DOUBLE-GROOVED END



STYLES 472/482 HOSE REPAIR ASSEMBLY



STYLES 473/483/485 (MALE) AND 474/484/486 (FEMALE) HOSE NIPPLE ASSEMBLY CAM-LOCKING TYPE

- 1 Aluminum Nipple – provides an assembly clearance with standard hose I.D. to permit easy manual engagement
- 2 Synthetic Rubber Seals – on nipple, assure sealing efficiency between the hose and nipple
- 3 Three-segment Aluminum Outer Clamp (four-segment on Style 485 and 486) – has internal ridges which match the external ridges on nipple. Adjusts to accommodate varied hose wall thicknesses and allows for re-tightening, if required
- 4 External Ridges on Nipple – aid in sealing with three-segment aluminum outer clamp
- 5 Nipple-to-Clamp Interlocking Design – assures component alignment and high end load capabilities.
- 6 Square Bolt Holes, Carriage Bolts, and Nuts– eases assembly; nuts can be tightened with a single standard socket, open-end, box or adjustable wrench
- 7 Clamp Segments have Tongue and Recess End Design – engage for proper alignment and to reduce bunching and hose extrusion, further aids adjustment to varied hose thicknesses and re-tightening, if necessary

JOB OWNER

System No. _____
Location _____

CONTRACTOR

Submitted By _____
Date _____

ENGINEER

Spec Sect _____ Para _____
Approved _____
Date _____

Victaulic® Hose Assembly Products



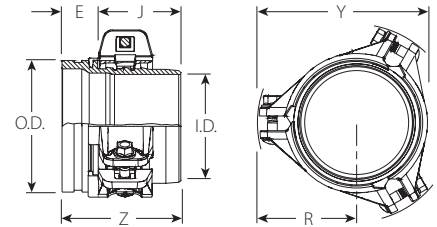
STYLES 470/480 HOSE NIPPLE ASSEMBLY



Victaulic Styles 470/480 Hose Nipple Assembly provides a lightweight, easily installed connection for joining hose to a standard grooved end piping system, Victaulic fittings and valves or hose-to-hose connections. The nipple slides easily into the hose and the three-segment clamp engages the nipple and around the hose O.D.

Standard Groove Configuration – outer end of nipple, to receive standard Victaulic couplings including Styles 77, 07, 75, 78, 791, HP-70 as well as Style 741 Vic-Flange adapter, outlet, reducing and other couplings.

DIMENSIONS



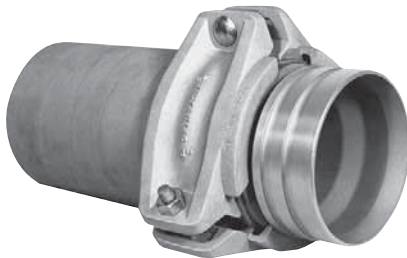
Size	Inches/mm										Aprx. Weight*	
	Dimensions								Hose Wall Thickness			Hose I.D.
Nom. Size Inches mm	E	J	I.D.	O.D.	R	Y	Z	Min.	Max.	±0.06/ ±1.52	Lbs.	kg
STYLE 480												
2	1.82	4.18	1.39	2.38	2.71	5.40	6.00	0.19	0.41	2.00	2.0	2.0
50	46	106	35	61	69	137	152	5	10	51	0.9	0.9
3	1.82	4.18	2.39	3.50	3.20	6.40	6.00	0.19	0.44	3.00	3.0	3.0
80	46	106	61	89	81	163	152	5	11	76	1.4	1.4
4	1.82	4.18	3.39	4.52	3.75	7.50	6.00	0.19	0.47	4.00	4.0	4.0
100	46	106	86	115	95	191	152	5	12	102	1.8	1.8
6	1.82	4.18	5.39	6.64	4.80	9.60	6.00	0.21	0.50	6.00	6.0	6.0
150	46	106	137	169	122	244	152	5	13	152	2.7	2.7
STYLE 470												
4	1.82	4.18	3.39	4.52	3.90	7.50	6.00	0.08	0.19	4.00	4.0	4.0
100	46	106	86	115	99	191	152	2	5	102	1.8	1.8
6	1.82	4.18	5.39	6.64	4.90	9.80	6.00	0.09	0.21	6.00	6.0	6.0
150	46	106	137	169	124	250	152	2	5	152	2.7	2.7

*Nipple and clamp assembly complete.

Victaulic® Hose Assembly Products

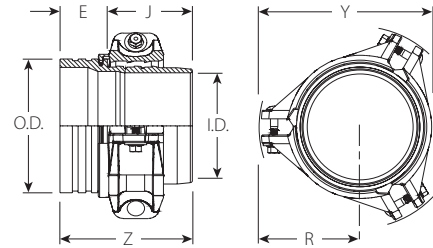


STYLES 471/481 HOSE NIPPLE ASSEMBLY



Victaulic Styles 471/481 Hose Nipple Assembly provides a lightweight, easily installed connection for joining hose to a double-grooved end piping system, Victaulic double-groove fittings or hose-to-hose connections. The nipple slides easily into the hose and the three-segment clamp engages the nipple and around the hose O.D.

DIMENSIONS



Size	Inches/mm										Aprx. Weight*
	Nom. Size Inches mm	Dimensions						Hose Wall Thickness		Hose I.D. ±0.06/ ±1.52	
	E	J	I.D.	O.D.	R	Y	Z	Min.	Max.		
STYLE 481											
4	2.37	4.19	3.39	4.52	3.75	7.50	6.56	0.19	0.47	4.00	3.5
100	60	106	86	115	95	191	167	5	12	102	1.6
6	2.37	4.19	5.39	6.64	4.80	9.60	6.56	0.21	0.50	6.00	6.5
150	60	106	137	169	122	244	167	5	13	152	2.9
STYLE 471											
4	2.37	4.19	3.39	4.52	3.90	7.80	6.56	0.08	0.19	4.00	3.5
100	60	106	86	115	99	198	167	2	5	102	1.6
6	2.37	4.19	5.39	6.64	4.90	9.80	6.56	0.09	0.21	6.00	5.0
150	60	106	137	169	124	250	167	2	5	152	2.3

*Nipple and clamp assembly complete.

Victaulic® Hose Assembly Products

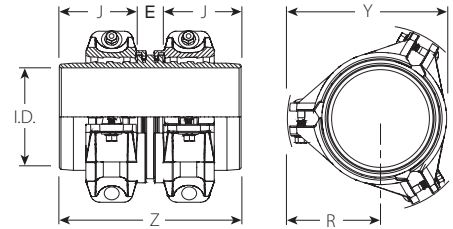


STYLES 472/482 HOSE REPAIR ASSEMBLY

Victaulic Styles 472/482 are lightweight, easily installed hose repair or hose-to-hose assemblies. The nipple slides easily into both mating hoses or hose pieces.



DIMENSIONS



Size	Inches/mm										Aprx. Weight*	
	Nom. Size Inches mm	Dimensions						Hose Wall Thickness		Hose I.D. ±0.06/ ±1.52		Lbs. kg
E		J	I.D.	O.D.	R	Y	Z	Min.	Max.			
STYLE 482												
2	1.37	4.2	1.39	2.71	5.40	9.75	0.19	0.41	2.00	3.5	2.0	
50	35	107	35	69	137	248	5	10	51	1.6	0.9	
3	1.37	4.2	2.39	3.20	6.40	9.75	0.19	0.44	3.00	4.5	3.0	
80	35	107	61	81	163	248	5	11	76	2.0	1.4	
4	1.37	4.2	3.39	3.75	7.50	9.75	0.19	0.47	4.00	6.0	4.0	
100	35	107	86	95	191	248	5	12	102	2.7	1.8	
6	1.37	4.2	5.39	4.80	9.60	9.75	0.21	0.50	6.00	7.5	6.0	
150	35	107	137	122	244	248	5	13	152	3.4	2.7	
STYLE 472												
4	1.37	4.2	3.39	3.90	7.80	9.75	0.08	0.19	4.00	6.0	4.0	
100	35	107	86	99	198	248	2	5	102	2.7	1.8	
6	1.37	4.2	5.39	4.90	9.80	9.75	0.09	0.21	6.00	7.5	6.0	
150	35	107	137	125	249	248	2	5	152	3.4	2.7	

*Nipple and clamp assembly complete.

Victaulic® Hose Assembly Products

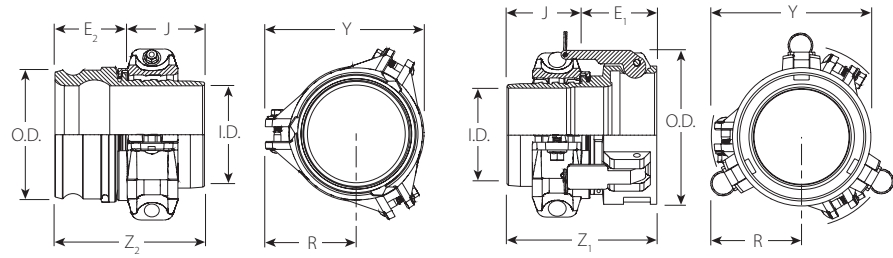


STYLES 473/483 (MALE) AND STYLES 474/484 (FEMALE) HOSE NIPPLE ASSEMBLY CAM-LOCKING TYPE



Victaulic Styles 473/483 (Male) and Styles 474/484 (Female) are lightweight, easily installed cam-locking type hose-to-hose assemblies. The nipple slides easily into both mating hoses or hose pieces. The integral cam-type locking device permits hose connection without additional components. Cam design and dimensions of both the Styles 473/483 (Male) and Styles 474/484 (Female) components are manufactured to Military Standard 27019 and are compatible with other cam-type locking devices made to this standard.

DIMENSIONS



STYLES 473/483 (MALE)

STYLES 474/484 (FEMALE)

Size	Inches/mm											Aprx. Weight*		
	Nom. Size Inches mm	Dimensions								Hose Wall Thickness		Hose I.D.	Lbs.	kg
		E1	E2	J	I.D.	O.D.	R	Y	Z1	Z2	Min.	Max.	±0.06/ ±1.52	
STYLE 483/484														
2	3.56	3.06	4.20	1.39	2.48	2.71	5.40	7.75	7.25	0.19	0.41	2.00	7.5	
50	90	78	107	35	63	69	137	197	184	5	10	51	3.4	
3	3.68	3.19	4.20	2.39	3.60	3.20	6.40	7.87	7.38	0.19	0.44	3.00	9.0	
80	93	81	107	61	91	81	163	200	187	5	11	76	4.1	
4	3.80	3.28	4.20	3.39	4.70	3.75	7.50	8.00	7.47	0.19	0.47	4.00	10.5	
100	97	83	107	86	119	95	191	203	190	5	12	102	4.8	
6	4.30	3.92	4.22	5.39	7.18	4.80	9.60	8.52	8.02	0.21	0.50	6.00	13.0	
150	109	100	107	137	182	122	244	216	204	5	13	152	5.9	
STYLE 473/474														
4	3.80	3.28	4.20	3.39	4.70	3.90	7.80	8.00	7.47	0.08	0.19	4.00	10.5	
100	97	83	107	86	119	99	198	203	190	2	5	102	4.8	
6	4.30	3.92	4.22	5.39	7.18	4.90	9.80	8.52	8.02	0.09	0.21	6.00	13.0	
150	109	100	107	137	182	125	249	216	204	2	5	152	5.9	

*Nipple and clamp assembly complete.

Victaulic® Hose Assembly Products



STYLE 485 (MALE) AND STYLE 486 (FEMALE)

“ROLLER QUAD CAM” LOCKING HOSE SHANK ASSEMBLY



Victaulic Styles 485 (Male) and 486 (Female) are lightweight, easily installed cam-locking type hose shanks for hose-to-hose assembly. The unique “quad cam” feature provides improved sealing and higher pressure capabilities on lightwall hose. Unique roller arm cams reduce the effort required to open and close the coupling and are self-locking in the closed position, resisting opening caused by vibration and other forces. A new, pressure-responsive gasket ensures leak-free service and is interchangeable with traditional washer-type flat gaskets. The nipple slides easily into both mating hoses or hose pieces. External clamps engage into the hose shank on each side and around the respective hose O.D.'s. The integral cam-type locking device permits hose connection without additional components. The interface dimensions of both the Styles 485 (Male) and 486 (Female) components meet Military Standard 27019 and are compatible with other cam-type locking devices made to this standard. Performance meets or exceeds MIL-PRF370H Burst Pressure Requirements.

STYLE 403 RIFTS



Victaulic Style 403 Coupling is used to join IPDS grooved hose nipples to each other and other components within the Army's RIFTS. It is rated at 740 psi (same as RIFTS). It features a “stab friendly”, self-centering gasket to spread and ease hose section joining, two ductile iron housings and four socket head cap screws. This low profile coupling, with well rounded exterior, works well with hoses to be reeled.

Victaulic® Hose Assembly Products



SPECIFICATIONS

Pressure Rating: Equivalent to the hose connected (150 psi/1034 kPa maximum)

Body/Nipple: Aluminum Alloy 356-T6, ASTM B-26

Seal: (Specify choice on order)*

- Grade "E" EPDM**
EPDM (Green color code). Temperature range -30°F to +230°F/-34°C to +110°C. Recommended for hot water service within the specified temperature range plus a variety of dilute acids, oil-free air and many chemical services. UL classified in accordance with ANSI/NSF 61 for cold +86°F/+30°C and hot +180°F/+82°C potable water service. NOT RECOMMENDED FOR PETROLEUM SERVICES.
- Grade "T" nitrile**
Nitrile (Orange color code). Temperature range -20°F to +180°F/-29°C to +82°C. Recommended for petroleum products, air with oil vapors, vegetable and mineral oils within the specified temperature range; except hot, dry air over +140°F/+60°C and water over +150°F/+66°C. NOT RECOMMENDED FOR HOT WATER SERVICES.
- Grade "O" fluoroelastomer**
Fluoroelastomer (Blue color code). Temperature range +20°F to +300°F/-7°C to +149°C. Recommended for many oxidizing acids, petroleum oils, halogenated hydrocarbons, lubricants, hydraulic fluids, organic liquids and air with hydrocarbons.

Other compounds available, contact Victaulic for details.

Actual fluid temperatures and services are governed by the above recommendations or those of the hose manufacturer, whichever is appropriate.

*Services listed are General Service Recommendations only. It should be noted that there are services for which these gaskets are not recommended. Reference should always be made to the latest Victaulic Gasket Selection Guide for specific gasket service recommendations and for a listing of services which are not recommended.

Clamps: Aluminum alloy 356-T6, ASTM B-26

Bolts/Nuts/Washers: Heat treated zinc electroplated carbon steel: Bolts - carriage head conforming to physical properties of ASTM A-449 minimum tensile 100,000psi/689400kPa; Nuts - flanged hex minimum tensile 110,000psi/758340kPa.

Cam Arms (Quad-Cam only): Brass

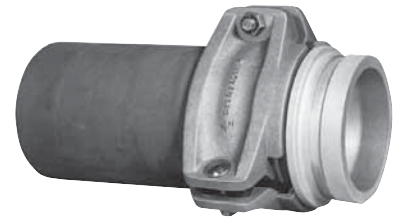
Cam Roller (Quad-Cam only): Hard Bronze

Bearings (Quad-Cam only): PFTE impregnated glass fabric with stainless steel backing

Cam Arm Pins: Stainless Steel Type 303

Pull-Rings: Zinc plated steel

Victaulic® Hose Assembly Products



WARRANTY

Refer to the Warranty section of the current Price List or contact Victaulic for details.

NOTE

This product shall be manufactured by Victaulic or to Victaulic specifications. All products to be installed in accordance with current Victaulic installation/assembly instructions. Victaulic reserves the right to change product specifications, designs and standard equipment without notice and without incurring obligations.

US & WORLD HEADQUARTERS

P.O. Box 31
Easton, PA 18044-0031 USA

4901 Kesslersville Road
Easton, PA 18040 USA

1-800-PICK-VIC (1-800-742-5842)
1-610-559-3300
1-610-250-8817 (fax)
pickvic@victaulic.com

www.victaulic.com

CANADA

905-884-7444
905-884-9774 (fax)
viccanada@victaulic.com

EUROPE

32-9-381-15-00
32-9-380-44-38 (fax)
viceuro@victaulic.be

UNITED KINGDOM

44 (0) 1438741100
44 (0) 1438313883 (fax)
viceuro@victaulic.be

CENTRAL AND SOUTH AMERICA

1-610-559-3300
1-610-559-3608 (fax)
vical@victaulic.com

ASIA PACIFIC

86-21-54253300
86-21-54253671 (fax)
vicap@victaulic.com

MIDDLE EAST

971-4-883-88-70
971-4-883-88-60 (fax)



WCAS-6C3PZE