

## FireLock NXT™ Automatic Valve Systems



PATENTED  
**FireLock®**  
NXT S/768  
DRY ALARM VALVE  
20 BAR/ 300 PSI  
DATE: 2007  
MOUNT VERTICAL

UL LISTED  
125M  
LPCB  
FM  
APPROVED

### DEVICES

- Wet
- Dry
- Deluge
- Preaction

### VALVES

### COUPLINGS

### FITTINGS

### SPRINKLERS

### ACCESSORIES



Piping. Systems. Solutions.

FireLock NXT valve systems

- lower operating pressure requirements
- ultra-fast trip time and water delivery
- reduced trim footprint
- easy to install, service and maintain
- fewer internal moving parts
- light-weight design
- eliminates air-to-water differential
- simplified trim configurations
- lowest friction loss
- robust diaphragm

New design requires less time and labor for installation resulting in

- reduced project costs
- out-of-the-box installation\*

\* optional trim packages ship assembled with valve, ready to install



FireLock NXT Series 768 dry valve shown



FireLock NXT Series 768 dry systems  
Ottawa, CANADA

## Design innovation inside and out.

Fewer moving parts and simplified trim configurations make for a sleek, easy-to-install system.



### AIR FEED MANIFOLD

- one-piece design reduces footprint
- mounted high to improve airflow and simplify maintenance



### CORROSION RESISTANT

- proprietary nickel-Teflon\* coating
- galvanized trim
- valve body painted inside and out

\* Teflon is a registered trademark of The DuPont Company



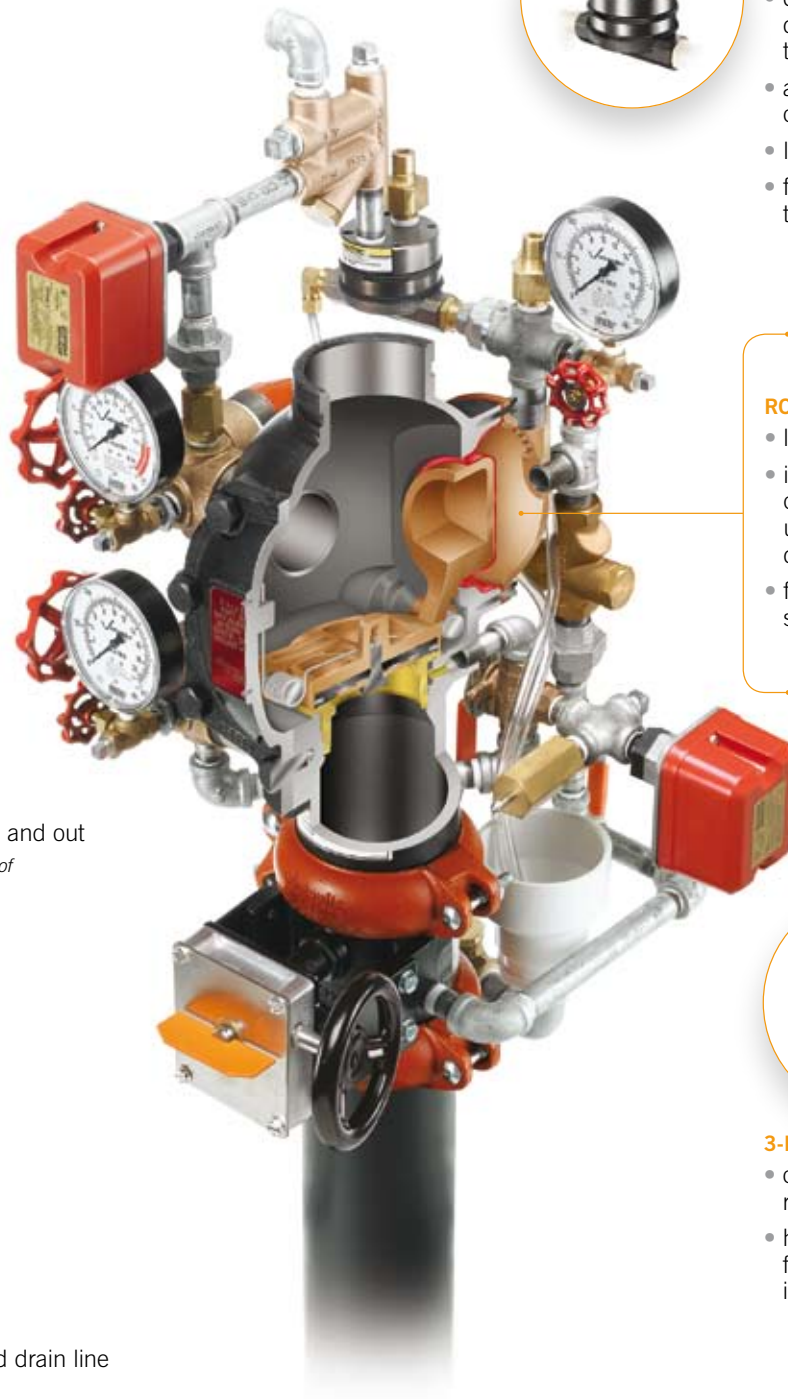
### VIC®-QUICK RISER

- fast installation
- only connection to air and drain line



### LOW-PRESSURE ACTUATOR

- eliminates air-to-water differential, set air pressure to 13psi/.89BAR
- allows a smaller air compressor to be used
- lower moisture content
- faster water delivery to sprinklers



### ROBUST DIAPHRAGM

- lighter, simpler design
- increased opening clearance allows ultra-fast water delivery when tripped
- fewer moving parts simplifies maintenance



### 3-IN-1 DEVICE

- check valve, strainer, restrictor combined
- helps to reduce the NXT footprint to the smallest in the industry

## A full line of devices to meet any specification

dry • deluge • preaction

### FireLock NXT Series 768 Dry Valve

Specify the Series 768 dry system for applications where freezing might occur, such as unheated warehouses, outdoor parking garages, and stadiums. Dry systems are filled with air or nitrogen, which serves to activate the valve.

Operating pressure: 300psi/2065kPa

Request Publication 30.80



### FireLock NXT Series 769 Deluge Valve

Where curtains of water are needed, and fast water delivery is essential, specify the Series 769 actuated valve with deluge trim. This valve is the ideal solution for protecting areas such as storage facilities, aircraft hangers, or warehouses containing flammable materials.

Operating pressure: 300psi/2065kPa

Request Publication 30.81





### FireLock NXT Series 769 Preaction Valve

The Series 769 system includes preaction trim which safeguards against premature or unwanted valve openings. FireLock NXT preaction valves are ideal for spaces containing sensitive or historically-significant materials and equipment such as museums, libraries, research laboratories, computer and electrical utility rooms, and hospitals.

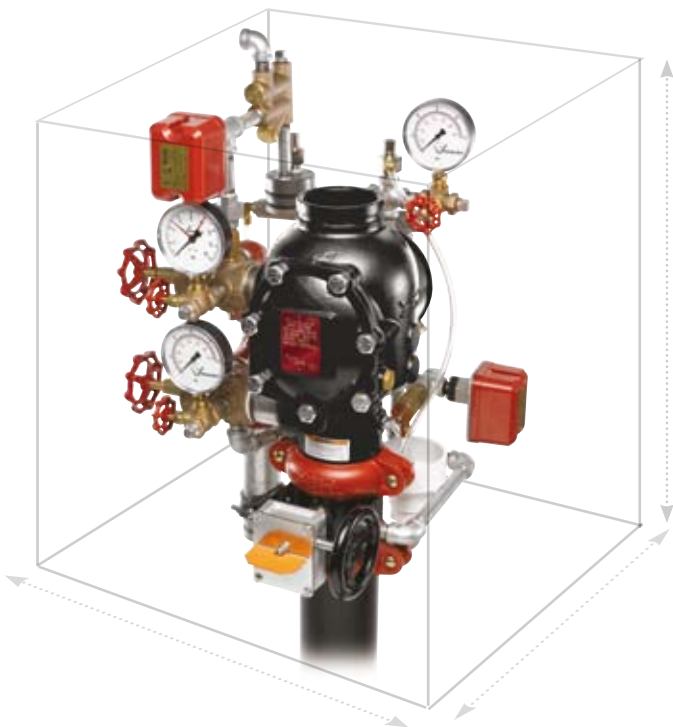
Operating pressure: 300psi/2065kPa

*Request Publication 30.82*



## Slim, compact profile

The innovative diaphragm design reduces the valve's center-to-back distance by up to 7"/178mm, as compared to many competitive products



## Superior productivity and performance

The FireLock NXT line of devices delivers bottom-line advantages for both system designers and installers. Easy to specify and install, FireLock NXT devices can:

- reduce installation time and expense
- improve maintenance with simplified, easy-to-access components
- provide faster system response time afforded by ultra-fast water-delivery and low friction loss characteristics
- provide the smallest installation footprint in the industry
- operate at lower pressures due to an eliminated air-to-water differential
- be ordered bare, pre-trimmed or with the Vic-Quick Riser for even faster installation



## Complete System Solutions

A worldwide symbol of luxury, the 30-story Spa Tower of the Bellagio in Las Vegas, Nevada, USA needed a fire protection system that matched its elegant style. Victaulic not only provided the full line of fire protection products and services, the company also delivered commercial sprinklers concealed in decorative casings to match the Renaissance flair of the hotel.

The Bellagio is known for its magnificent accommodations and priceless works of art. To provide maximum protection for the premises, a combination of wet and dry fire protection methods are used, with Victaulic products serving both systems.

The Victaulic dry system check valve separates system water supplies from dry pipe sprinkler systems. With the optional accelerator the valve can be configured to respond faster for use in larger systems or where faster response times are required.

The Bellagio Spa Tower is built with three sprinkler systems per floor, for a total of 26,250 sprinklers in the tower alone. Because different applications call for varying designs, Victaulic carries a wide range of sprinklers.

Source: [www.statewidefire.com/projects/casinos](http://www.statewidefire.com/projects/casinos)



# FireLock Alarm Check Valves

Series 751 Alarm Check Valve



## Series 751 and 759 FireLock Alarm Check Valves

In wet systems where there is no danger of freezing, the FireLock Series 751 and Series 759 alarm check valves are ideal. They are trimmed with a water bypass line and an in-line swing check valve that allows pressure surges to enter the system above the alarm check valve clapper without lifting a mechanism. The Series 752 Retard Chamber is available to help prevent false alarms during pressure surges.

These devices can be installed horizontally or vertically and there is also an optional trim package available for use with an excess pressure pump.

Series 759 Alarm Check Valve



Typical Applications include:  
Hotels, Office Spaces, Heated Warehouses

Series 751 Alarm Check Valve:

*Request Publication 30.01*



Series 759 Alarm Check Valve:

*Request Publication 30.02*



## valves



Series 705W FireLock Butterfly Valve

*Request Publication 10.18*



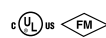
Series 717 FireLock Check Valve

*Request Publication 10.08*



Series 771H OS&Y Gate Valve

*Request Publication 10.92*



Series 722 Ball Valve

*Request Publication 08.15*



Series 728 FireLock Ball Valve

*Request Publication 10.17*





# FireLock Couplings



## FireLock EZ™ Style 009 Rigid Coupling

The Style 009 coupling ships and installs as a single unit with no loose parts. Save time and money on the jobsite. Available from 1¼"–4"/32mm–100mm, including 76.1mm and for working pressures of 300psi/2068kPa.

*Request Publication 10.60*



## couplings



Style 005 FireLock Rigid Coupling  
*Request Publication 10.02*



Style 75 Flexible Coupling  
*Request Publication 06.05*



Style 750 Reducing Coupling  
*Request Publication 06.08*



Style 744 FireLock Flange Adapter  
*Request Publication 10.04*



FireLock couplings and flange adapters are available in 1¼–8"/32–200mm, 175–350psi /1200–2400kPa.

FireLock fittings are available in 1¼–8"/50–200mm sizes with working pressures ranging from 300–350psi /2065–2400kPa/. Unique design creates better flow characteristics.

## fittings and hole cut



FireLock Fittings  
*Request Publication 10.03*



No. 10-DR Drain Elbow  
*Request Publication 10.05*



Style 920/920N Mechanical-T Bolted Branch Outlet  
*Request Publication 11.02*



For the full line of Victaulic FireLock Couplings, Fittings and Hole Cut Products, please visit [www.victaulic.com](http://www.victaulic.com) or consult the G-105FP catalog.



# Sprinklers

## standard commercial

With just two model types – the V27 and V34 – we cover the full range of standard commercial sprinkler protection.



V2704  
K5.6 Imp./8,1 S.I.  
Standard Orifice  
*Request Publication 40.10*



V3405  
K8.0 Imp./11,5 S.I.  
Large Orifice  
*Request Publication 40.15*



V2725  
K5.6 Imp./8,1 S.I.  
Standard Orifice  
*Request Publication 40.17*



V3423  
K5.6 Imp./8,1 S.I.  
Conventional  
*Request Publication 40.19*



V3409  
K8.0 Imp./11,5 S.I.  
Large Orifice  
*Request Publication 40.16*



V2710  
K5.6 Imp./8,1 S.I.  
Standard Orifice  
*Request Publication 40.14*

## storage

Victaulic has designed a full range of FireLock sprinklers to address special storage area fire prevention challenges, such as large spaces and dangerous, flammable materials. All are available in standard or quick response models to control dangerous fires at lower temperatures.



V3403  
K11.2 Imp./16,2 S.I.  
ELO  
*Request Publication 40.20*



V2724  
K5.6 Imp./8,1 S.I.  
Intermediate Level  
*Request Publication 40.22*



V3418  
K8.0 Imp./11,5 S.I.  
Intermediate Level  
*Request Publication 40.23*



VK510  
K25.2 Imp./36,3 S.I.  
ESFR  
*Request Publication 40.25*

- Extra Large Orifice (ELO) for applications where high flows at low pressure are required
- Early Suppression/Fast Response (ESFR) for severe service applications where highly flammable hazards require immediate, comprehensive containment
- intermediate level heads for mid-level applications such as open grid walkways

## special coatings

Our sprinklers can be specially-coated to ensure long life in potentially corrosive environments. Ask your Victaulic sales representative for further details.



Wax Coated



Nickel/Teflon\* Coated

\*Teflon is a registered trademark of the DuPont Company.

# Sprinklers

## extended coverage

Our extended coverage sprinklers feature larger orifice sizes to provide added coverage when only normal water pressure is available. They are designed to produce a uniform, hemispherical spray pattern at 175psi/1200kPa and are designed for use in a variety of applications. Both standard and quick response models are available in a choice of finishes.



V3411  
K11.2 Imp./16,2 S.I.\*  
ECLH

Request Publication 40.30



V3421  
K14.0 Imp./20,2 S.I.  
ECOH

Request Publication 40.31



V3415  
K8.0 Imp./11,5 S.I.  
ECLH

Request Publication 40.33

\* K14.0 Imp./20,2 S.I. model also available

For the full line of Victaulic FireLock Automatic Sprinklers, please visit [www.victaulic.com](http://www.victaulic.com) or consult the G-105FP catalog.



## dry

Freezer/cooler applications can be tough on sprinklers. That's why these models are specifically designed to perform reliably in the harshest environments. Features proprietary nickel/Teflon\* coating option and stainless steel escutcheons. Available custom-made on a 5-day turnaround.



V36  
K8.0 Imp./11,5 S.I.  
Pendant

Request Publication 40.61



V36  
K5.6 Imp./8,1 S.I.  
Pendant

Request Publication 40.60



V36  
K5.6 Imp./8,1 S.I.  
K8.0 Imp./11,5 S.I.  
Upright

Request Publication 40.62



V36  
K5.6 Imp./8,1 S.I.  
K8.0 Imp./11,5 S.I.  
Concealed

Request Publication 40.67



V36  
K5.6 Imp./8,1 S.I.  
Horizontal Sidewall

Request Publication 40.64



V36  
K8.0 Imp./11,5 S.I.  
Horizontal Sidewall

Request Publication 40.65

- belleville spring sealing mechanism made of beryllium nickel for prompt response to glass bulb fracture
- every sprinkler must pass a factory hydrostatic test at 500psi/3450kPa

## finishes

Though dependable performance is the top priority, we know too that in many applications aesthetics are important to building owners, architects, interior designers and installers. That's why our sprinklers and cover plates are available in a variety of finishes and custom colors. Our concealed cover plates can be matched to Sherwin-Williams colors using our approved color chip chart. Ask your Victaulic sales representative about the hundreds of colors available.



White



Chrome



Black



Custom Painted

## Sprinkler Tools / Accessories

### sprinkler accessories

Victaulic is committed to making your sprinkler system installations and service calls as easy as possible, and for that reason you will find a complete line of specially designed sprinkler wrenches and spare sprinkler storage cabinets available.



Our open end socket style and recessed sprinkler wrenches quickly drop over the hex-head boss with which every Victaulic sprinkler comes equipped.

Sprinkler Wrenches  
*Request Publication 40.80*



Sprinkler Guard  
*Request Publication 40.83*



Sprinkler Storage Cabinet  
*Request Publication 40.81*

### hole cutting tools

Victaulic hole cutting tools make installations faster and easier. The HCT-908 cuts holes up to 4½"/114mm. The VHCT-900 accurately cuts holes 1–3½"/25–89mm.



HCT908  
Hole-Cutting Tool



VHCT-900  
Hole-Cutting Tool



VIC-TAP II  
Hole-Cutting Tool

### roll grooving tools

Victaulic pioneered the concept of cold-forming a groove into a pipe in 1945, and continues to this day to bring innovation to the industry. Our patented VE26 and VE46 Groove in Place portable groovers now operate with a drive kit, improving speed and efficiency.



VE12 Groove in Place



VE46 with Drive Kit  
Field Fabrication



Groove-n-Go  
Field Fabrication



VE268  
Shop Fabrication

For the full line of Victaulic Tools and Accessories, please visit [www.victaulic.com](http://www.victaulic.com) or consult the G-105FP catalog.



## Sprinkler Tools / Accessories

### sprinkler system tools

Now work more quickly and economically on your sprinkler system with **DropMaster**\*

DropMaster's labor saving technology allows contractors and building maintenance personnel to replace or perform maintenance on sprinkler systems quickly and efficiently, while simultaneously disposing of trapped water and odors in the system.

This reduces system downtime and minimizes unnecessary inconvenience to surrounding work space, and eliminates the potential for damage to building property from water in the system.

Ask your Victaulic sales representative for details about this innovative technology.



Electric Powered  
Model DP512-O

Request Publication  
PB-286



Gasoline Powered  
Model DP512-G

Request Publication  
PB-286

\* DropMaster is a registered trademark of Gecco, Inc.

### CPVC products

The Victaulic CPVC FireLock plain end system consists of small diameter, impact-resistant pipe, straight and reducing fittings, tees, elbows, crosses and sleeves designed specifically for residential and specialty piping applications.

Victaulic CPVC piping is rated for service up to 175 psi/1200 kPa at 150°F/66°C, and is available in 3/4–2"/20–50 mm size range.

FireLock CPVC products meet NFPA 13, 13R, and 13D standards for residential and light hazard occupancies. FireLock CPVC products are also approved for potable water services and comply with ANSI/NSF DW Standard for health effects.

The system is joined together with a one-step solvent cement for fast, labor saving installations.

Victaulic CPVC FireLock One-Step Solvent Cement (Style 889)

Though many solvent brands are approved for the Victaulic CPVC FireLock system, our one-step joining technology eliminates the need for primers – reducing curing time and further simplifying connections. Victaulic CPVC products are only available in North America.

CPVC Firelock piping products  
Request Publication 80.01



## Beyond the product

### Design Support

Victaulic offers complete project support, from easy-to-use software that helps you layout a system and draft specifications to hands-on personal consultation to field support during complex installations.

Visit [www.victaulic.com](http://www.victaulic.com) to explore the full range of complimentary software tools available or call us today (in the U.S.A and Mexico.: 1-800-PICK-VIC and in Canada: 1-905-844-7444).



### Customer Care, Global Sales and Service

Engineering and installation support are only a phone call away. Dedicated experts can answer your questions, even from the jobsite when time is precious and answers are needed immediately.

Victaulic sales and engineering teams are located throughout the world to support local customers and installations. Visit [www.victaulic.com](http://www.victaulic.com) for a complete directory of our international offices and facilities.

### Over 80 years of Innovation and Quality

Built upon the principals of innovation and quality, Victaulic pioneered many of the technologies that define the mechanical pipe joining industry today. Victaulic innovations in fire protection technology include:

- 1925** Introduced the grooved end concept to the United States
- 1952** First grooved-end product to achieve UL Listing for fire protection
- 1957** Introduced roll grooving to piping industry
- 1964** First FlushSeal® gasket – for dry systems
- 1969** First outlet coupling
- 1972** Pioneered and achieved UL approval of roll grooving for 0.188" light wall pipe in fire protection applications
- 1975** First bolted mechanical branch connection
- 1975** Introduced Vic Hole Cutting Tool – First tool for easily cutting centered and aligned outlet holes
- 1978** Introduced Vic-Tap® – First positive location, full port hot tapping device with UL Listing
- 1978** Introduced Vic-Check® – First grooved end dual-disc check valve to achieve UL Listing
- 1979** First electro-hydraulic roll groover for 2-6" standard wall pipe
- 1986** First dual disc check valve designed with grooved ends for risers
- 1986** Introduced Series 718/719 TestMaster – First alarm test module combining 24 field assembled parts into one factory assembled unit

- 1988** Introduced 005 FireLock Coupling – First truly rigid grooved end coupling designed specifically for fire protection services
- 1988** Introduced 727 FireBall® – First grooved end, 300 psi rated ball valve for fire protection
- 1990** Introduced FireLock® Fittings – First CAD designed, high flow efficiency, short radius grooved end fittings for fire protection
- 1990** Introduced Snap-Let® – First small diameter, hole cut strapped outlet for fire protection
- 1991** Introduced the Pressfit® System – First IPS pressed fitting system
- 1994** Introduced 717 FireLock® Check – First extended body swing check design and grooved end check valve for fire protection. Also introduced 717-R FireLock® Check, with a riser kit.
- 1994** First enhanced tracking rolls for “hands off” grooving
- 1996** Introduced 927 Sprinkler Tee – First small diameter, hole cut metric size strapped outlet for fire protection
- 1996** Introduced Pressfit® valves – first pressed end ball valves
- 1997** First truly rigid grooved end outlet couplings for ESFR/ELO fire protection systems
- 1997** First grooved end cast end-of-line fitting design for fire protection
- 1998** Introduced FireLock® line of devices – engineered to be the lightest, most compact devices designed to date
- 1999** Introduced FireLock® line of automatic sprinklers
- 2003** Introduced 745 FireLock Fire-Pac cabinet – a compact pre-assembled, self-contained fire protection control system for 1½ and 2" pipe sizes
- 2003** Introduced V36 dry-type fire sprinklers with UL listing
- 2005** Introduced FireLock® EZ – first rigid coupling designed as a lightweight, installation ready coupling with no loose parts.
- 2006** Introduced FireLock NXT device family – most compact, water-efficient and air-efficient devices available.





**WORLD HEADQUARTERS**

PO Box 31  
Easton, PA 18044-0031  
USA

4901 Kesslersville Road  
Easton, PA 18040 USA

1-800-PICK-VIC  
(1-800-742-5842)  
1-610-559-3300  
1-610-250-8817 (fax)  
pickvic@victaulic.com

**UNITED STATES**

PO box 31  
Easton, PA 18044-0031  
1-610-559-3300  
1-610-250-8817 (fax)  
victaulic@victaulic.com

**CANADA**

123 Newkirk Road  
Richmond Hill  
ON L4C 3G5  
905-884-7444  
905-884-9774 (fax)  
viccanada@victaulic.com

**EUROPE**

Prijkelstraat 36  
9810 Nazareth, Belgium  
32-9-381-1500  
32-9-380-4438 (fax)  
viceuro@victaulic.be

**UNITED KINGDOM**

Unit 14,  
Arlington Business Park  
Whittle Way, Stevenage  
Hertfordshire, SG1 2BD  
+44 143 874 1100  
+44 143 831 3883 (fax)  
viceuro@victaulic.com

**CENTRAL AND  
SOUTH AMERICA**

PO Box 31  
Easton, PA 18044-0031  
USA

4901 Kesslersville Road  
Easton, PA 18040 USA  
1-610-559-3300  
1-610-559-3608 (fax)  
vical@victaulic.com

**ASIA PACIFIC**

4/F, No. 321  
Tain Yao Qiao Road  
Shanghai  
200030 China  
+86-21-54253300  
+86-21-54253671 (fax)  
vicap@victaulic.com



WCAS-6YLH5S



[www.victaulic.com](http://www.victaulic.com)

PB-380 ENG REV B

Victaulic is a registered trademark of Victaulic Company. ©2007 Victaulic Company. All rights reserved.