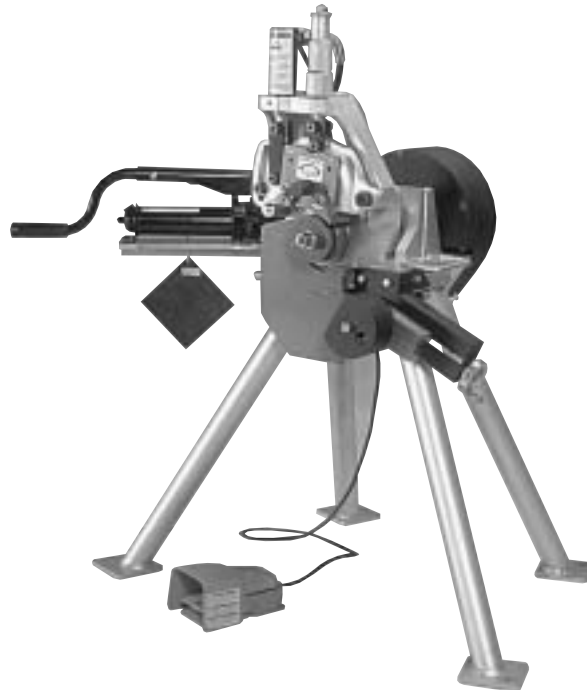


RP-270FSD

REPAIR PARTS FOR VE270FSD Roll Grooving Tool



PARTS ORDERING INFORMATION

When ordering parts the following information is necessary for the Victaulic Tool Company to promptly process the order and send the correct part(s).

1. Tool Model Number. VE270FSD
2. Tool Serial Number.
The Serial Number can be found on the side of the tool.
3. Quantity, Item Number, Part Number, Description.
Example: (1), 03, R-004-272-PLT, Pump Bracket
4. Where to send the part(s).
Company Name. Address
5. To whose attention to send the part(s).
Person's Name.
6. Purchase Order Number

Parts may be ordered from the nearest Victaulic Sales Office.

VICTAULIC[®] IS AN ISO 9001 CERTIFIED COMPANY

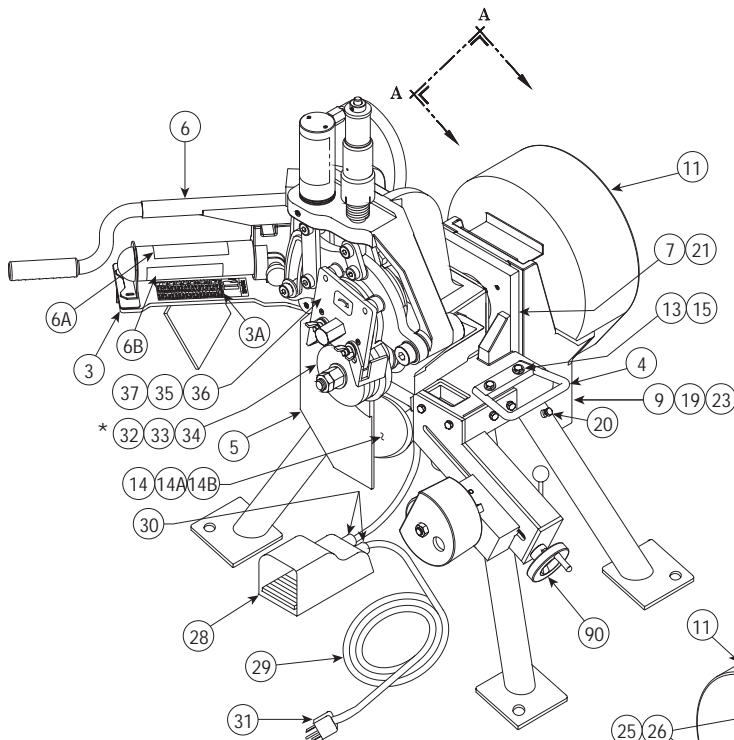
Victaulic Company of America
Phone: 1-800-PICK-VIC (1-800-742-5842)
Fax: 610-250-8817
e-mail: pickvic@victaulic.com

Victaulic Company of Canada
Phone: 416-675-5575
Fax: 416-675-5565
e-mail: viccanada@victaulic.com

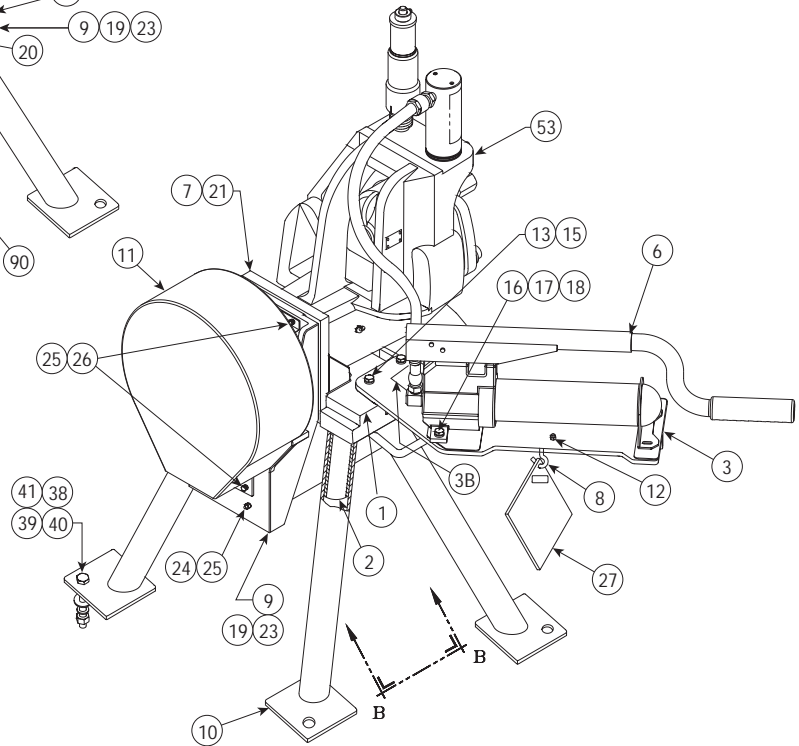
Victaulic Europe
Phone: 32-9-381-1500
Fax: 32-9-380-4438
e-mail: viceuro@victaulic.be

Victaulic America Latina
Phone: 610-559-3300
Fax: 610-559-3608
e-mail: vical@victaulic.com

Victaulic Asia Pacific
Phone: 65-6235-3035
Fax: 65-6235-0535
e-mail: vicap@victaulic.com



*SEE PAGES 6 & 7 FOR ARBOR CONFIGURATIONS



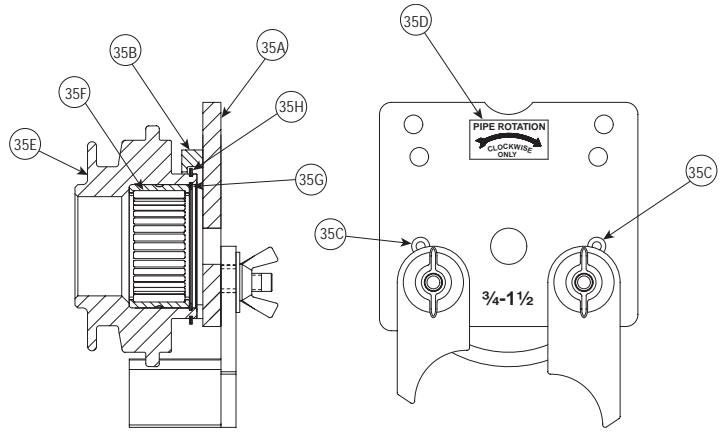
Item #	Part #	Qty.	Description
01	R-001-276-MCH	1	Table
02	R-003-416-PLT	4	Upper Leg
03	R-004-272-PLT	1	Pump Bracket **
03A	R-009-424-LAB	1	"C" Diameter Label for Standard Pipe
03B	R-064-268-LBL	1	VE268/270 Tightening Direction Label
04	R-005-272-PLT	2	Base Handle
05	R-006-276-PNT	1	Guard
06	R-201-261-0FS	1	Hydraulic Pump Assembly **
06A	R-062-260-0FS	1	Hydraulic Pump Label
06B	R-031-272-LAB	1	Instructions Warning Label
07	R-004-276-MCH	1	Vertical Plate
08	N-S40-040-000	1	1/4" X 2.62 Lg. Hook Bolt with 1/4 - 20 UNC Nut, Pltd.
09	R-012-417-MAC	1	Motor Mounting Bracket
10	R-013-417-PLT	4	Lower Leg
11	R-015-417-PNT	1	Gear Guard
12	N-N01-040-000	1	1/4 - 20 UNC Hex Nut, Pltd.
13	N-S01-060-100	6	3/8 - 16 UNC X 1.00 Lg. Hex Head Screw, Pltd.
14	R-019-416-FSD	1	Gearmotor **
14A	R-020-417-FSD	1	Gearmotor Filter
14B	R-022-417-LAB	1	Gearmotor Label
15	N-W01-060-000	6	3/8" Flat Washer, Pltd.
16	N-S01-050-108	2	5/16 - 18 UNC X 1.50 Lg. Hex Head Screw, Pltd.
17	N-W01-050-000	4	5/16" Flat Washer, Pltd.
18	N-N01-050-000	2	5/16 - 18 UNC Hex Nut, Pltd.
19	N-W03-060-000	8	3/8" Lock Washer, Pltd.

Item #	Part #	Qty.	Description
20	N-S01-050-012	4	5/16 - 18 UNC X 0.75 Lg. Hex Head Screw, Grade 5, Pltd.
21	N-S03-060-100	6	3/8 - 16 UNC X 1.00 Lg. Socket Hd. Cap Screw, Blk. Ox.
22	N-M02-000-001	-	Lubriplate Grease (as required)
23	N-S01-060-104	4	3/8 - 16 UNC X 1.25 Lg. Hex Hd. Screw, Pltd.
24	N-N02-040-000	4	1/4 - 28 UNF Hex Nut, Pltd.
25	N-W03-040-000	8	1/4" Lock Washer, Pltd.
26	N-S01-040-010	4	1/4 - 20 UNC X 0.63 Lg. Hex Hd. Screw, Pltd.
27	R-039-272-0FS	1	Guard Setting Pad Assembly
28	N-E03-000-002	1	Footswitch
29	N-E04-000-001	1	#14/3 Line Cord X 20 Ft. Lg.
30	N-E06-000-001	2	Cord Grip Connector
31	N-E08-000-003	1	Plug
32	R-902-272-L03	1	2 - 3 1/2" Lower Roll for Steel Pipe
33	R-904-272-L06	1	4 - 6" Lower Roll for Steel Pipe
34	R-908-272-L12	1	8 - 12" Lower Roll for Steel Pipe
35	R-9A0-268-U02	1	Upper Roll Cover/Guard Assy. for 3/4 - 1 1/2" Steel Pipe
36	R-9A2-268-U06	1	Upper Roll Cover/Guard Assy. for 2 - 6" Steel Pipe
37	R-9A8-268-U12	1	Upper Roll Cover/Guard Assy. for 8 - 12" Steel Pipe
38	N-S01-080-204	4	1/2 - 13UNC X 2.25 Lg. Hex Head Cap Screw, Pltd.
39	N-W01-080-000	4	1/2" SAE Flat Washer, Pltd.
40	N-W03-080-000	4	1/2" Lock Washer, Pltd.
41	N-N01-080-000	4	1/2 - 13 UNC Hex Nut, Pltd.
115	R-512-260-VE0	1	Lower Roll Removal Tool (Not Shown)

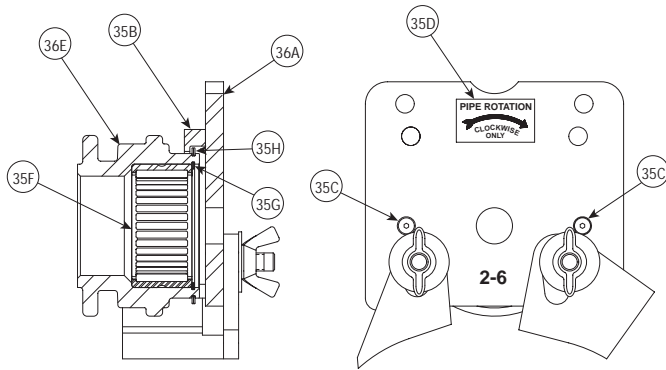
** Indicates additional items required and/or recommended when ordering.

Item #	Part #	Qty.	Description
35	R-9A0-268-U02	1	Upper Roll Cover/Guard Assembly
35A	R-500-268-WLD	1	Upper Roll Guard
35B	R-102-272-0FS	1	Upper Roll Guard Cover Ring
35C	N-S09-008-010	2	#8-32 UNC X 5/8" Lg. Flat Hd. Hex Socket Cap Screw, Blk. Ox.
35D	R-040-416-LAB	1	Pipe Rotation Label
35E*	R-900-268-U01	1	3/4" - 1 1/2" Upper Roll for Steel Pipe
35F	N-B02-200-001	1	Needle Bearing
35G	N-T03-000-014	1	Snap Ring
35H	N-T03-000-022	1	Snap Ring

*Not a saleable item – assembly must be ordered.



**UPPER ROLL COVER/GUARD ASSEMBLY
FOR 3/4 - 1 1/2" STEEL PIPE
(Item 35)**



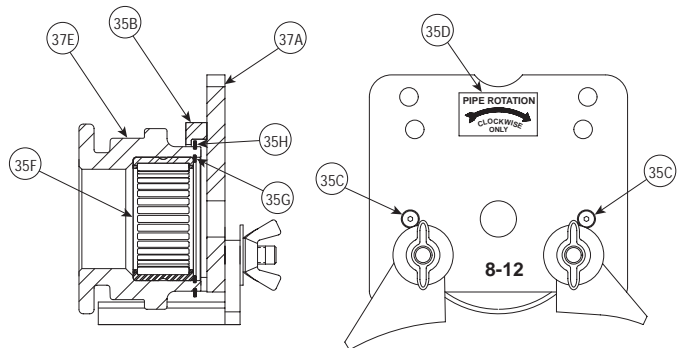
**UPPER ROLL COVER/GUARD ASSEMBLY
FOR 2 - 6" STEEL PIPE
(Item 36)**

Item #	Part #	Qty.	Description
36	R-9A2-268-U06	1	Upper Roll Cover/Guard Assembly
36A	R-510-268-WLD	1	Upper Roll Guard
35B	R-102-272-0FS	1	Upper Roll Guard Cover Ring
35C	N-S09-008-010	2	#8-32 UNC X 5/8" Lg. Flat Hd. Hex Socket Cap Screw, Blk. Ox.
35D	R-040-416-LAB	1	Pipe Rotation Label
36E*	R-902-272-U06	1	2" - 6" Upper Roll for Steel Pipe
35F	N-B02-200-001	1	Needle Bearing
35G	N-T03-000-014	1	Snap Ring
35H	N-T03-000-022	1	Snap Ring

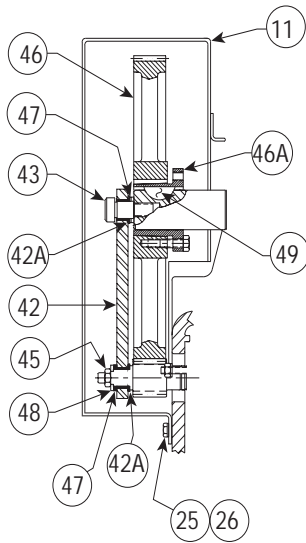
*Not a saleable item – assembly must be ordered.

Item #	Part #	Qty.	Description
37	R-9A8-268-U12	1	Upper Roll Cover/Guard Assembly
37A	R-520-268-WLD	1	Upper Roll Guard
35B	R-102-272-0FS	1	Upper Roll Guard Cover Ring
35C	N-S09-008-010	2	#8-32 UNC X 5/8" Lg. Flat Hd. Hex Socket Cap Screw, Blk. Ox.
35D	R-040-416-LAB	1	Pipe Rotation Label
37E*	R-908-272-U12	1	8" - 12" Upper Roll for Steel Pipe
35F	N-B02-200-001	1	Needle Bearing
35G	N-T03-000-014	1	Snap Ring
35H	N-T03-000-022	1	Snap Ring

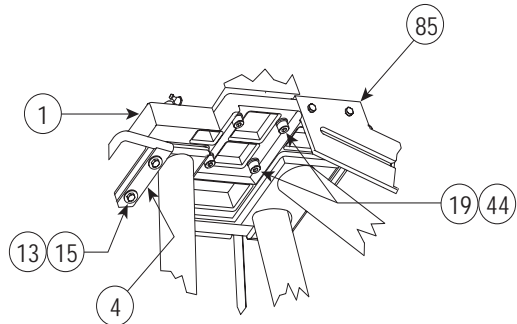
*Not a saleable item – assembly must be ordered.



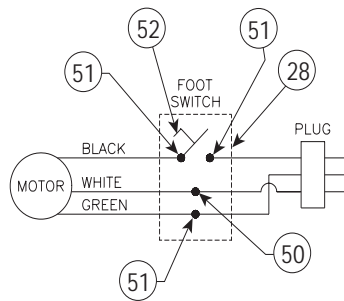
**UPPER ROLL COVER/GUARD ASSEMBLY
FOR 8 - 12" STEEL PIPE
(Item 37)**



VIEW A-A



VIEW B-B

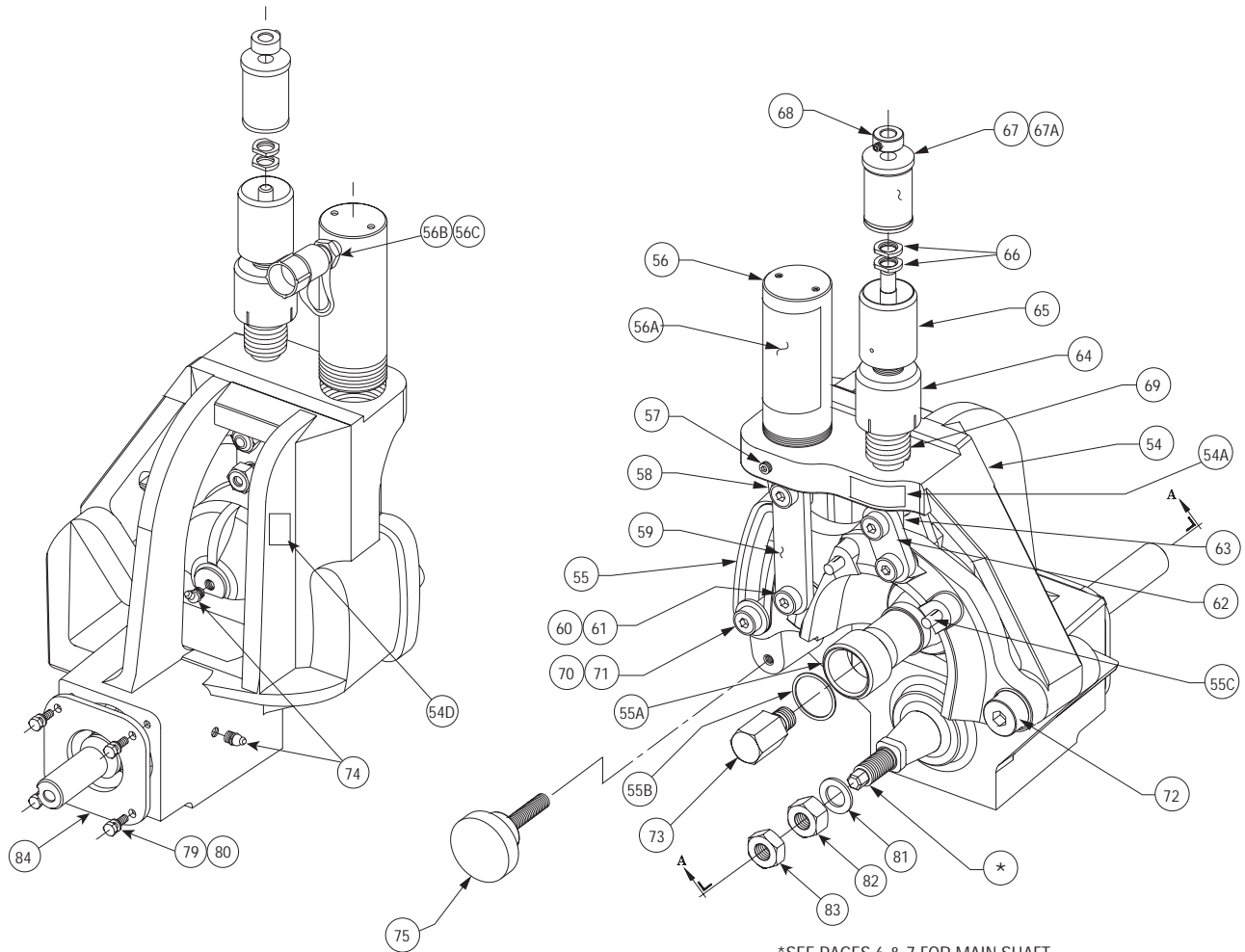


ELECTRICAL SCHEMATIC

Item #	Part #	Qty.	Description
42	R-014-417-PLT	1	Tie Bar **
42A	N-B21-062-001	2	Flange Bushing
43	N-S05-100-012	1	.625 X .75 Lg. Shoulder Bolt, Blk. Ox.
44	N-S03-060-200	4	3/8 - 16 UNC X 2.00 Lg. Socket Hd. Cap Screw, Blk. Ox.
45	N-N05-060-000	1	3/8 - 16 UNC Thin Elastic Locknut, Plttd.
46	R-037-417-MAC	1	Spur Gear **
46A	N-M38-000-001	1	P1 Bushing with 0.375 Wide Keyway

Item #	Part #	Qty.	Description
47	N-B22-062-001	2	Thrust Bushing
48	N-B40-048-001	1	Tongued Washer
49	N-K01-121-000	1	#1210 Woodruff Key
50	N-E07-000-001	1	Wire Nut, #72 B
51	N-E05-000-018	4	Fork Wire Terminal, #TRB-14
52	N-E02-000-027	1	Micro Switch

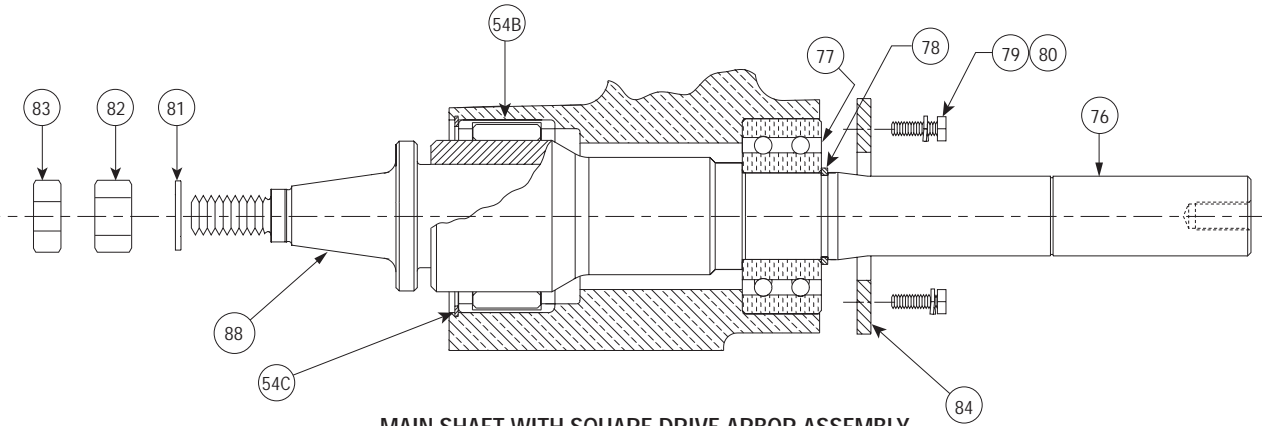
** Indicates additional items required and/or recommended when ordering.



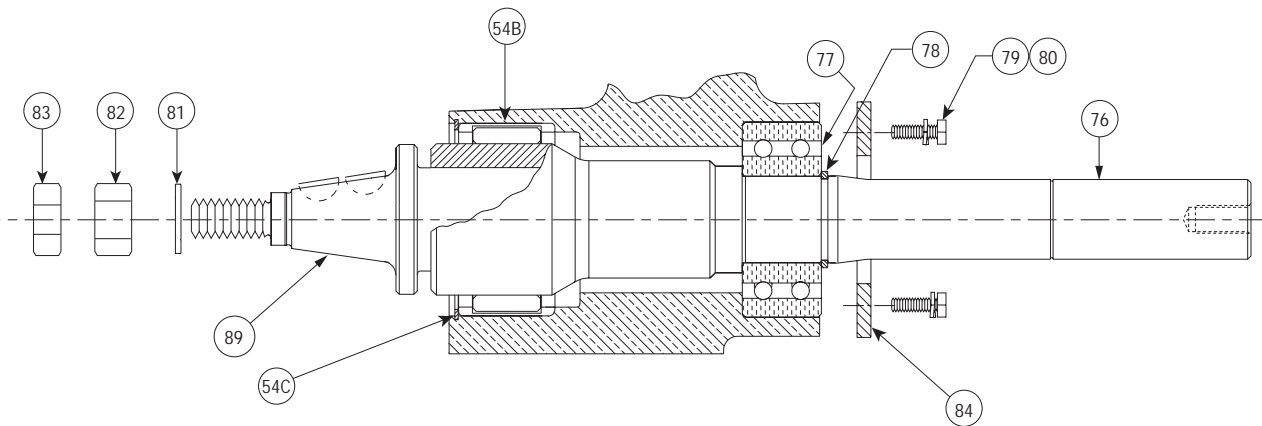
Item #	Part #	Qty.	Description
53	R-100-270-FSD	1	Tool Head Assembly
54	R-002-272-OFS	1	Body **
54A	R-034-272-LAB	1	Depth Stop Adjustment Direction Label
54B	N-B02-275-002	1	Needle Bearing
54C	N-T03-000-015	1	Snap Ring
54D	R-069-272-LAB	1	Name Plate
55	R-003-268-MCH	1	Arm **
55A	N-B04-156-002	1	Inner Race
55B	N-T03-000-017	1	Snap Ring
55C	N-P11-006-100	2	Groove Pin
56	N-H01-000-008	1	Hydraulic Cylinder **
56A	R-007-276-LBL	1	Roll Warning Label
56B	N-H50-000-018	1	Ram Half Coupler
56C	N-H50-000-015	1	Dust Cap
57	N-S80-060-008	1	3/8 - 16 UNC x .50 Lg. Brass Tip Set Screw
58	R-012-272-OFS	1	Cylinder Adapter
59	R-013-272-OFS	2	Link - Cylinder to Arm
60	N-S05-100-110	4	.625 X 1.63 Lg. Hex Socket Head Shoulder Screw per ANSI/ASME B18.3, Blk. Ox.

Item #	Part #	Qty.	Description
61	N-N08-080-000	4	1/2 - 13 UNC Heavy Hex Nylon Insert Locking Nut
62	R-116-268-PLT	2	Link - Depth Adjuster to Arm
63	R-017-272-OFS	1	Depth Adjuster Shaft
64	R-018-272-OFS	1	Depth Adjuster Lock
65	R-019-272-OFS	1	Depth Adjuster
66	R-020-272-OFS	2	Pipe Size Indicator Calibrator
67	R-021-272-OFS	1	Pipe Size Indicator Barrel **
67A	R-122-268-LBL	1	Pipe Size Groove Depth Label
68	N-S95-040-000	1	Collar with Set Screw
69	N-M03-000-015	1	Spring
70	R-025-272-OFS	1	Guide Washer
71	R-019-226-MCH	1	.625 X 1.00 Lg. Socket Hd. Shoulder Screw, Blk. Ox.
72	N-S05-160-014	1	1.00 X .875 Lg. Socket Hd. Shoulder Screw, Blk. Ox.
73	R-030-272-OFS	1	Upper Roll Guard Cover Screw
74	N-M01-000-001	2	65° Grease Fitting, 1/8" NPT
75	N-M04-000-004	1	Steel Hand Knob

** Indicates additional items required and/or recommended when ordering.



MAIN SHAFT WITH SQUARE DRIVE ARBOR ASSEMBLY

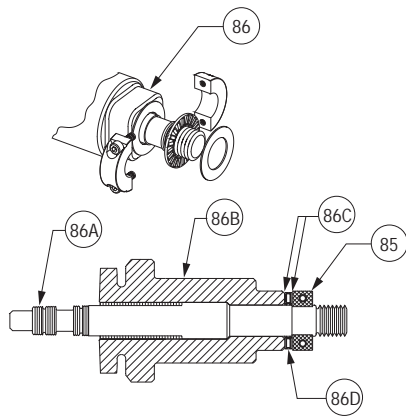


MAIN SHAFT WITH WOODRUFF KEY ARBOR ASSEMBLY ***

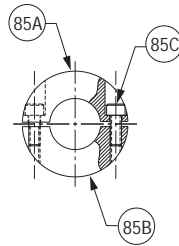
Item #	Part #	Qty.	Description
76	R-129-270-MCH	1	Main Shaft
77	N-B01-157-002	1	40mm ID X 90mm OD X 36.5mm Wide Bearing
78	N-T03-000-018	1	Snap Ring
79	N-S01-040-010	4	1/4 - 20 UNC X .63 Lg. Hex Head Screw, Pltd.
80	N-W03-040-000	4	1/4" Lock Washer, Pltd.
81	N-W06-120-000	1	3/4" ID SAE High Strength Flat Washer, Pltd.
82	N-N01-120-000	1	3/4 - 10 UNC Hex Nut, Grade 5, Pltd.
83	N-N03-120-000	1	3/4 - 10 UNC Hex Jam Nut, Pltd.
84	R-028-272-0FS	1	Back Cover Plate

*** Discontinued item. Shown only to clarify tool configuration.

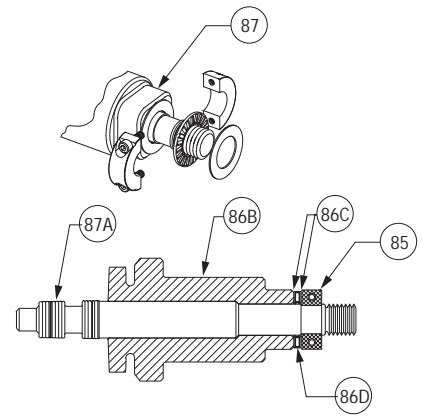
**** When upgrading to square drive shaft, lower roll with square drive feature must be used.



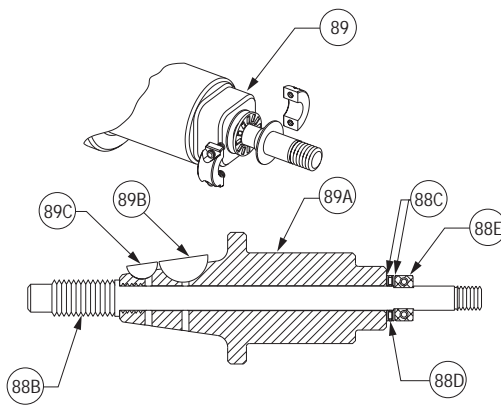
**3/4" Pipe Arbor Assembly
(Item 86)**



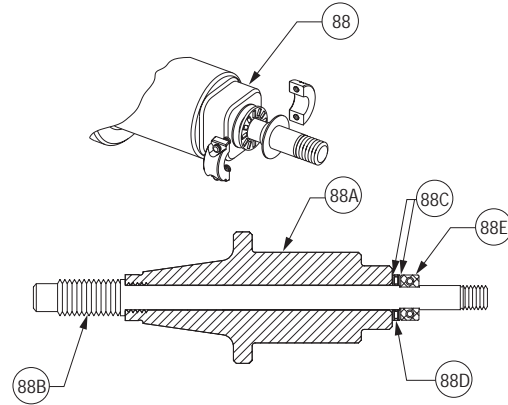
**Shaft Collar Assembly
(Item 85)**



**1" & 1 1/2" Pipe Arbor Assembly
(Item 87)**



**2" - 12" Pipe Arbor Assembly
with Woodruff Keys ***
(Item 89)**

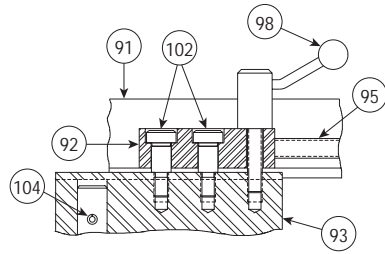


**2" - 12" Pipe Arbor Assembly with Square Drive
(Item 88)**

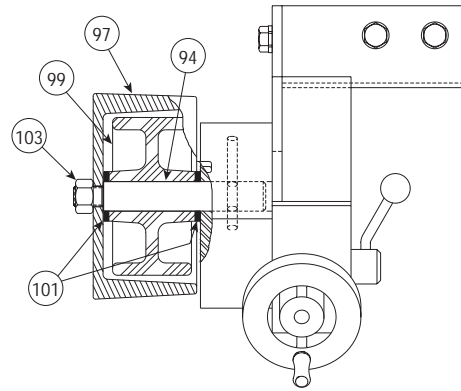
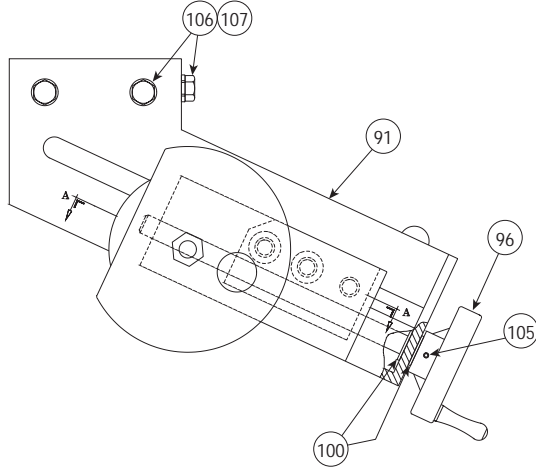
Item #	Part	Qty.	Description
SHAFT COLLAR ASSEMBLY			
85A	R-171-268-MCH	1	Shaft Collar – Top
85B	R-172-268-MCH	1	Shaft Collar – Bottom
85C	N-S03-006-006	2	#6–32 UNC x 3/8" Lg. SHCS, Blk. Ox.
3/4" PIPE ARBOR ASSEMBLY			
86	R-170-268-VE0	1	3/4" Arbor Assembly **
86A	R-975-268-L75	1	VE268/VE270FSD 3/4" Lower Roll
86B	R-900-268-A02	1	VE268/VE270FSD Lower Roll Adapter
86C	N-M30-000-005	2	Washer, Flat, Special, 0.031 Thk. X 0.750 Bore
86D	N-B03-750-001	1	Needle Thrust Bearing, 0.750 Bore
85	R-173-268-ASY	1	Shaft Collar Assembly **
1" & 1 1/2" PIPE ARBOR ASSEMBLY			
87	R-180-268-VE0	1	1" & 1 1/2" Arbor Assembly **
87A	R-901-268-L02	1	VE268/270FSD 1" & 1 1/2" Lower Roll
86B	R-900-268-A02	1	VE268/270FSD Lower Roll Adapter
86C	N-M30-000-005	2	Washer, Flat, Special, 0.031 Thk. X 0.750 Bore
86D	N-B03-750-001	1	Needle Thrust Bearing, 0.750 Bore
85	R-173-268-ASY	1	Shaft Collar Assembly **

Item #	Part	Qty.	Description
2" - 12" PIPE ARBOR ASSEMBLY WITH SQUARE DRIVE			
88	R-190-268-VE0	1	VE268/VE270FSD 2" - 12" Arbor Assembly ** ****
88A	R-195-268-MCH	1	VE268/VE270FSD Arbor 2" - 12" Pipe
88B	R-192-268-MCH	1	VE268/VE270FSD Taper Roll Retaining Stud
88C	N-M30-000-004	2	Washer, Flat, Special, 0.031 Thk. X 0.500 Bore
88D	N-B03-500-001	1	Needle Thrust Bearing 0.500 Bore
88E	N-M13-000-002	1	Split Shaft Collar
2" - 12" PIPE ARBOR ASSEMBLY WITH WOODRUFF KEYS ***			
89	-	1	2" - 12" Arbor Assembly ***
89A	R-191-268-MCH	1	2" - 12" Arbor
89B	N-K01-060-800	1	#608 Woodruff Key
89C	N-K01-060-500	1	#605 Woodruff Key

** Indicates additional items required and/or recommended when ordering.
 *** Discontinued item. Shown only to clarify tool configuration.
 **** Indicates optional part number. R-195-268-KIT includes Item 88 plus 2" - 3",
 4" - 6" and 8" - 12" lower rolls.



VIEW A-A

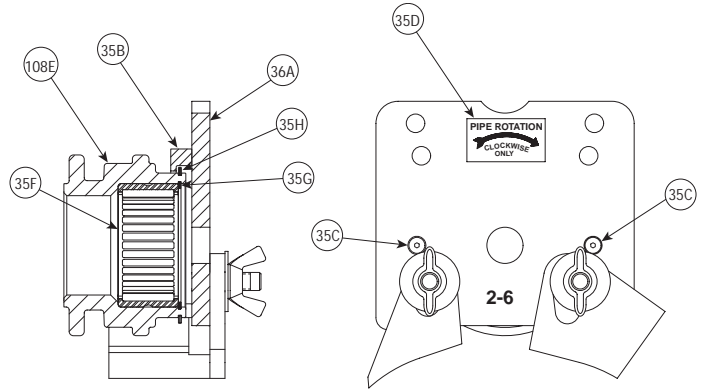


Item #	Part #	Qty.	Description
90	R-400-276-FSD	-	Stabilizer Assembly (Optional)
91	R-401-276-PNT	1	Stabilizer Body
92	R-402-416-PLT	1	Stabilizer Guide Nut
93	R-403-276-PLT	1	Stabilizer Guide
94	R-404-416-MAC	1	Stabilizer Roller Shaft
95	R-405-276-MCH	1	Stabilizer Adjusting Screw
96	R-406-416-MAC	1	Stabilizer Handwheel
97	R-407-416-PNT	1	Stabilizer Wheel Guard
98	R-450-416-ASY	1	Stabilizer Locking Handle Assembly
99	N-M05-000-004	1	4 x 2 Polyurethane Wheel
100	N-B05-037-002	2	Thrust Washer
101	N-B05-075-004	2	Thrust Washer
102	N-S05-080-012	2	Socket Head Shoulder Bolt, $\varnothing.50$ x 0.75 Long, Blk. Ox.
103	N-N02-080-000	1	Hex Nut, $\frac{1}{2}$ - 20UNF, Pltd.
104	N-P01-004-208	1	Roll Pin, $\varnothing.25$ x 2.50 Long
105	N-P01-002-102	1	Roll Pin, $\varnothing.125$ x 1.125 Long
106	N-S02-060-100	4	$\frac{3}{8}$ - 16UNC Hex Head Cap Screw x 1.0 Long Grade 8, Pltd.
107	N-W03-060-000	4	$\frac{3}{8}$ " Lock Washer, Pltd.

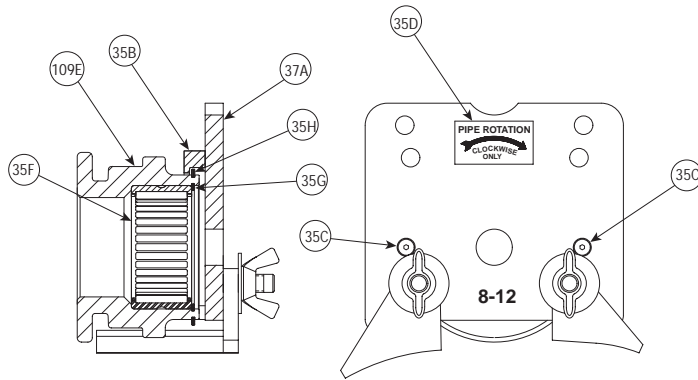
ADDITIONAL ROLL SETS

Item #	Part #	Qty.	Description
108	R-XA2-268-U06	1	Upper Roll Cover/Guard Assembly
36A	R-510-268-WLD	1	Upper Roll Guard
35B	R-102-272-0FS	1	Upper Roll Guard Cover Ring
35C	N-S09-008-010	2	#8-32 UNC X 5/8" Lg. Flat Hd. Hex Socket Cap Screw, Blk. Ox.
35D	R-040-416-LAB	1	Pipe Rotation Label
108E *	R-X02-272-U06	1	2" - 6" Upper Roll for Stainless Steel Pipe
35F	N-B02-200-001	1	Needle Bearing
35G	N-T03-000-014	1	Snap Ring
35H	N-T03-000-022	1	Snap Ring
108J	R-X02-272-L03	1	2 - 3 1/2" Lower Roll for Stainless Steel Pipe (not shown)
108K	R-X04-272-L06	1	4 - 6" Lower Roll for Stainless Steel Pipe (not shown)

*Not a saleable item – assembly must be ordered.



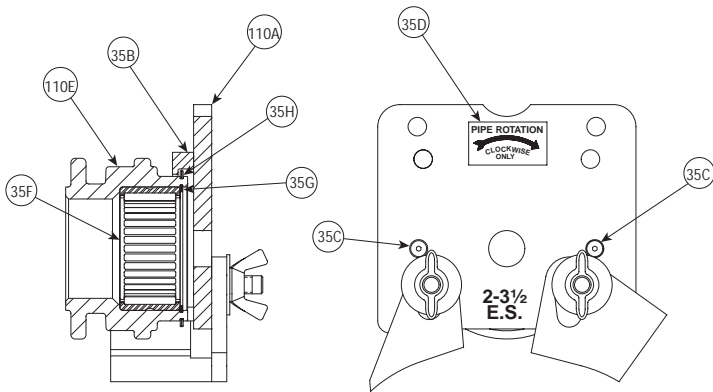
**UPPER ROLL COVER/GUARD ASSEMBLY
FOR 2 - 6" SCHEDULE 5S/10S
STAINLESS STEEL PIPE
(Item 108)**



**UPPER ROLL COVER/GUARD ASSEMBLY
FOR 8 - 12" SCHEDULE 5S/10S
STAINLESS STEEL PIPE
(Item 109)**

Item #	Part #	Qty.	Description
109	R-XA8-268-U12	1	Upper Roll Cover/Guard Assembly
37A	R-520-268-WLD	1	Upper Roll Guard
35B	R-102-272-0FS	1	Upper Roll Guard Cover Ring
35C	N-S09-008-010	2	#8-32 UNC X 5/8" Lg. Flat Hd. Hex Socket Cap Screw, Blk. Ox.
35D	R-040-416-LAB	1	Pipe Rotation Label
109E *	R-X08-272-U12	1	8" - 12" Upper Roll for Stainless Steel Pipe
35F	N-B02-200-001	1	Needle Bearing
35G	N-T03-000-014	1	Snap Ring
35H	N-T03-000-022	1	Snap Ring
109J	R-X08-272-L12	1	8 - 12" Lower Roll for Stainless Steel Pipe (not shown)

*Not a saleable item – assembly must be ordered.



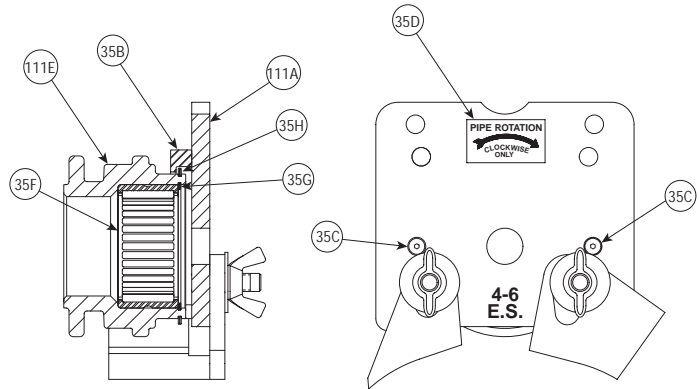
Item #	Part #	Qty.	Description
110	R-ZA2-268-U03	1	Upper Roll Cover/Guard Assembly
110A	R-Z00-268-WLD	1	Upper Roll Guard
35B	R-102-272-0FS	1	Upper Roll Guard Cover Ring
35C	N-S09-008-010	2	#8-32 UNC X 5/8" Lg. Flat Hd. Hex Socket Cap Screw, Blk. Ox.
35D	R-040-416-LAB	1	Pipe Rotation Label
110E *	R-Z02-272-U03	1	2" - 3 1/2" Upper Roll for EndSeal® Pipe
35F	N-B02-200-001	1	Needle Bearing
35G	N-T03-000-014	1	Snap Ring
35H	N-T03-000-022	1	Snap Ring
110J	R-Z02-272-L03	1	2" - 3 1/2" Lower Roll for EndSeal Pipe (Not Shown)

*Not a saleable item – assembly must be ordered.

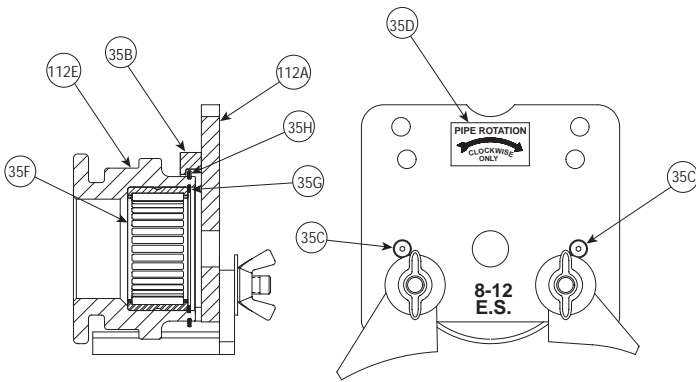
**UPPER ROLL COVER/GUARD ASSEMBLY
FOR 2 - 3 1/2" ENDSEAL PIPE
(Item 110)**

Item #	Part #	Qty.	Description
111	R-ZA4-268-U06	1	Upper Roll Cover/Guard Assembly
111A	R-Z10-268-WLD	1	Upper Roll Guard
35B	R-102-272-0FS	1	Upper Roll Guard Cover Ring
35C	N-S09-008-010	2	#8-32 UNC X 5/8" Lg. Flat Hd. Hex Socket Cap Screw, Blk. Ox.
35D	R-040-416-LAB	1	Pipe Rotation Label
111E *	R-Z04-272-U06	1	4" - 6" Upper Roll for EndSeal Pipe
35F	N-B02-200-001	1	Needle Bearing
35G	N-T03-000-014	1	Snap Ring
35H	N-T03-000-022	1	Snap Ring
111J	R-Z04-272-L06	1	4" - 6" Lower Roll for EndSeal Pipe (Not Shown)

*Not a saleable item – assembly must be ordered.



**UPPER ROLL COVER/GUARD ASSEMBLY
FOR 4 - 6" ENDSEAL PIPE
(Item 111)**



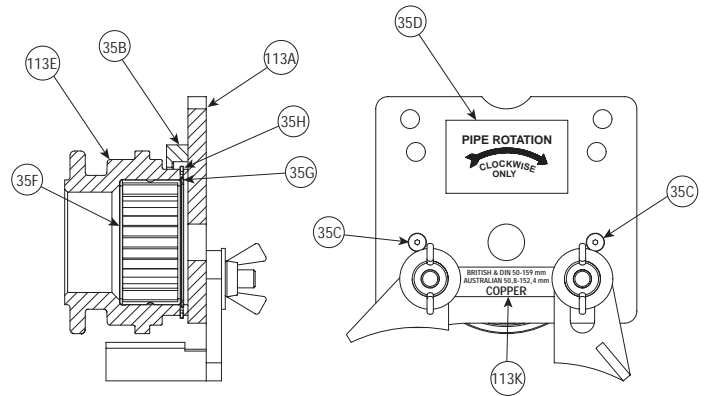
**UPPER ROLL COVER/GUARD ASSEMBLY
FOR 8 - 12" ENDSEAL PIPE
(Item 112)**

Item #	Part #	Qty.	Description
112	R-ZA8-268-U12	1	Upper Roll Cover/Guard Assembly
112A	R-Z20-268-WLD	1	Upper Roll Guard
35B	R-102-272-0FS	1	Upper Roll Guard Cover Ring
35C	N-S09-008-010	2	#8-32 UNC X 5/8" Lg. Flat Hd. Hex Socket Cap Screw, Blk. Ox.
35D	R-040-416-LAB	1	Pipe Rotation Label
112E *	R-Z08-272-U12	1	8" - 12" Upper Roll for EndSeal Pipe
35F	N-B02-200-001	1	Needle Bearing
35G	N-T03-000-014	1	Snap Ring
35H	N-T03-000-022	1	Snap Ring
112J	R-Z08-272-L12	1	8" - 12" Lower Roll for EndSeal Pipe (Not Shown)

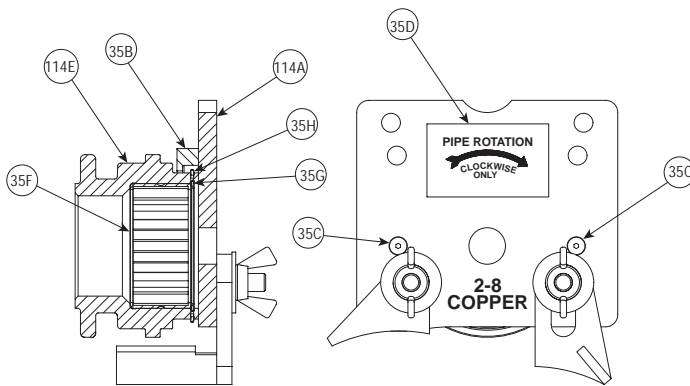
*Not a saleable item – assembly must be ordered.

Item #	Part #	Qty.	Description
113	R-RE1-268-U06	1	Upper Roll Cover/Guard Assembly
113A	R-R00-268-WLD	1	Upper Roll Guard
35B	R-102-272-0FS	1	Upper Roll Guard Cover Ring
35C	N-S09-008-010	2	#8-32 UNC X 5/8" Lg. Flat Hd. Hex Socket Cap Screw, Blk. Ox.
35D	R-040-416-LAB	1	Pipe Rotation Label
113E *	R-RE1-272-U06	1	Upper Roll for Copper Pipe
35F	N-B02-200-001	1	Needle Bearing
35G	N-T03-000-014	1	Snap Ring
35H	N-T03-000-022	1	Snap Ring
113J	R-RE1-272-L06	1	Lower Roll for Copper Pipe (Not Shown)
113K	R-157-272-LBL	1	Roll Guard Cover Label (Export)

*Not a saleable item – assembly must be ordered.



**UPPER ROLL COVER/GUARD ASSEMBLY
FOR 50,8-152,4 mm AUSTRALIAN,
50-159 mm BRITISH/DIN
COPPER PIPE
(Item 113)**



**UPPER ROLL COVER/GUARD ASSEMBLY
FOR 2 - 8" COPPER PIPE
(Item 114)**

Item #	Part #	Qty.	Description
114	R-RA2-268-U08	1	Upper Roll Cover/Guard Assembly
114A	R-R00-268-WLD	1	Upper Roll Guard
35B	R-102-272-0FS	1	Upper Roll Guard Cover Ring
35C	N-S09-008-010	2	#8-32 UNC X 5/8" Lg. Flat Hd. Hex Socket Cap Screw, Blk. Ox.
35D	R-040-416-LAB	1	Pipe Rotation Label
114E *	R-R02-272-U08	1	2" - 8" Upper Roll for Copper Pipe
35F	N-B02-200-001	1	Needle Bearing
35G	N-T03-000-014	1	Snap Ring
35H	N-T03-000-022	1	Snap Ring
114J	R-R02-272-L06	1	2" - 6" Lower Roll for Copper Pipe (Not Shown)
114K	R-R08-272-L08	1	8" Lower Roll for Copper Pipe (Not Shown)

*Not a saleable item – assembly must be ordered.

Victaulic® Factory Representatives and Distributor Stocks Worldwide

Victaulic reserves the right to change product specifications, designs and standard equipment without notice and without obligation.