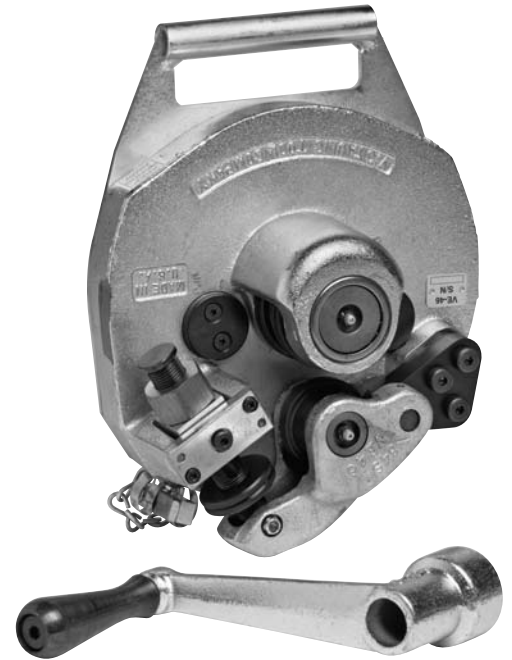


## REPAIR PARTS FOR VE46 and VE46P In-Place Groovers



### PARTS ORDERING INFORMATION

When ordering parts, the following information is necessary for Victaulic to promptly process the order and send the correct part(s).

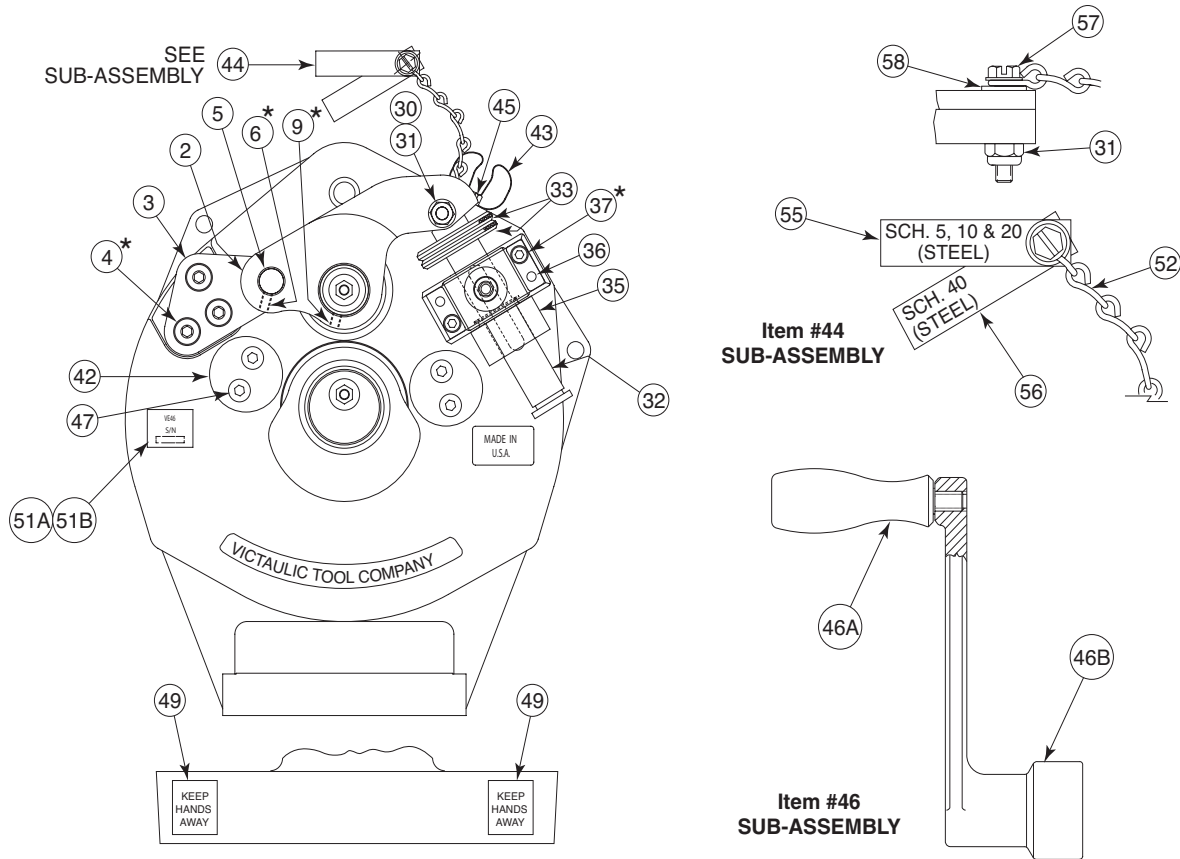
1. Tool Model Number. VE46 or VE46P
2. Tool Serial Number.  
The Serial Number can be found near the handle of the tool.
3. Quantity, Item Number, Part Number, Description.  
Example: (1), 39, R-012-026-0FS, Trunnion.
4. Where to send the part(s).  
Company Name. Address
5. To whose attention to send the part(s).  
Person's Name.
6. Purchase Order Number

Parts may be ordered from the nearest Victaulic Sales Office. Consult the back page of this instruction manual for the nearest Victaulic Sales Office.

#### VICTAULIC® IS AN ISO 9001 CERTIFIED COMPANY

UNITED STATES	CANADA	EUROPE	UK	MIDDLE EAST	CENTRAL & SOUTH AMERICA	ASIA-PACIFIC
Phone: 1-800-PICK-VIC (1-800-742-5842) Fax: 610-250-8817 e-mail: pickvic@victaulic.com	Phone: 905-884-7444 Fax: 905-884-9774 e-mail: viccanada@victaulic.com	Phone: 32-9-381-1500 Fax: 32-9-380-4438 e-mail: viceuro@victaulic.be	Phone: 44(0)1438741100 Fax: 44(0)1438313883 e-mail: viceuro@victaulic.be	Phone: 971-4-883-88-70 Fax: 971-4-883-88-60 e-mail: viceuro@victaulic.be	Phone: 610-559-3300 Fax: 610-559-3608 e-mail: vical@victaulic.com	Phone: 86-21-54253300 Fax: 86-21-54253671 e-mail: vicap@victaulic.com

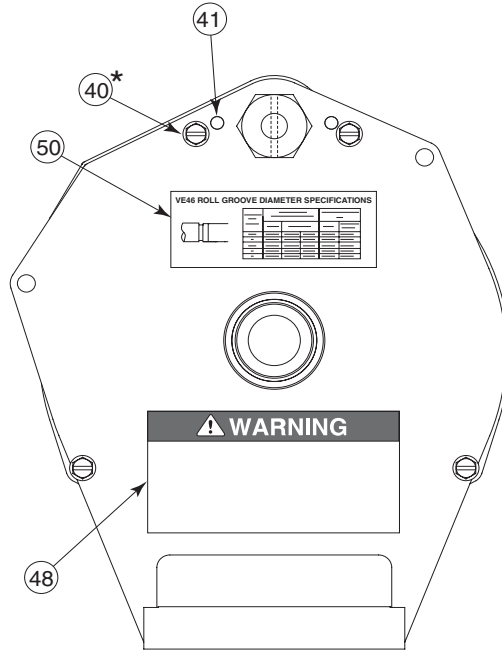
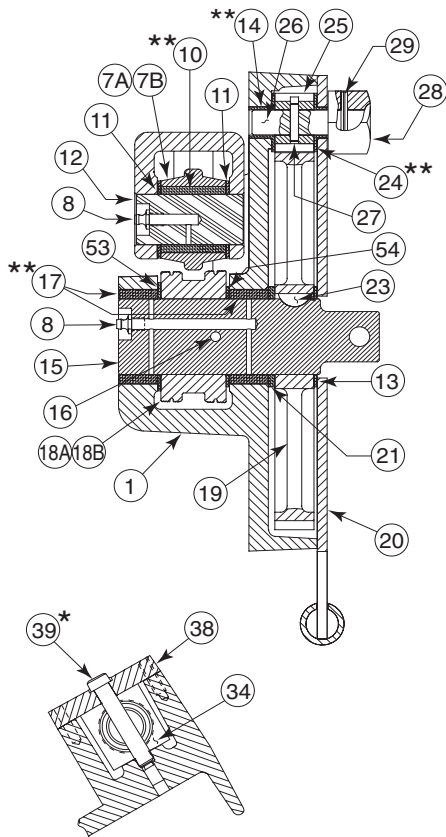
# VE46 AND VE46P IN-PLACE GROOVER



Item#	Part #	Qty.	Description
1	R-013-046-MCH	1	Gear Housing
2	R-012-046-MCH	1	Arm
3	R-006-046-MCH	1	Arm Link
*4	N-S05-060-100	3	Shoulder Screw, $\frac{3}{8}$ " Dia. X 1" Lg., Blk. Ox.
5	R-010-046-MCH	1	Arm Link Shaft
*6	N-S90-010-006	1	Set Screw, #10-24UNC X $\frac{3}{8}$ " Lg. Half-Dog Pt. w/Nylon Insert
***7A	R-904-046-U06	1	Upper Roll, Steel
***7B	R-P04-046-U06	1	Upper Roll, PVC/Aluminum
8	N-M01-000-007	2	Grease Fitting, $\frac{1}{4}$ " - 28 Straight
*9	N-S90-010-004	1	Set Screw, #10-24UNC X $\frac{1}{4}$ " Lg. Half-Dog Pt. w/Nylon Insert
**10	N-B02-100-009	1	Bearing
11	N-B05-100-002	2	Thrust Washer
12	R-007-046-MCH	1	Upper Roll Shaft
13	N-B05-150-002	1	Thrust Washer
**14	N-B21-050-005	1	Flanged Bearing
15	R-108-046-MCH	1	Lower Roll/Gear Shaft
16	N-P10-003-204	1	Pin, Driv-Lok Type "C" (Shearproof) $\frac{3}{16}$ " Dia. X $2\frac{1}{4}$ " Lg.
**17	N-B02-150-006	2	Bearing
18A	R-904-046-L06	1	Lower Roll, Steel
18B	R-P04-046-L06	1	Lower Roll, PVC/Aluminum
19	R-019-046-MCH	1	Gear
20	R-120-046-WLD	1	Gear Cover Plate
21	N-B05-175-003	1	Thrust Washer
23	N-K01-060-500	1	Woodruff Key, #605
**24	N-B21-050-004	1	Flanged Bearing
25	R-015-012-MCH	1	Pinion
26	R-026-046-MCH	1	Pinion Shaft
27	N-P10-003-208	1	Pin, Driv-Lok Type "C" (Shearproof) $\frac{5}{32}$ " Dia. X $\frac{3}{4}$ " Lg.
28	R-018-026-0FS	1	Drive Nut
29	N-P10-003-202	1	Pin, Driv-Lok Type "C" (Shearproof) $\frac{1}{8}$ " Dia. X $1\frac{1}{4}$ " Lg.
30	N-S05-040-104	1	Shoulder Screw, $\frac{1}{4}$ " Dia. X $1\frac{1}{4}$ " Lg., Blk. Ox.
31	N-N15-010-000	2	Elastic Locknut #10-24UNC, Pltd.

Refer to notes on following page.

# VE46 AND VE46P IN-PLACE GROOVER



### NOTES:

\* Denotes items to be assembled with No. 242 Loctite.

\*\* Denotes items to be assembled with No. 290 Loctite.

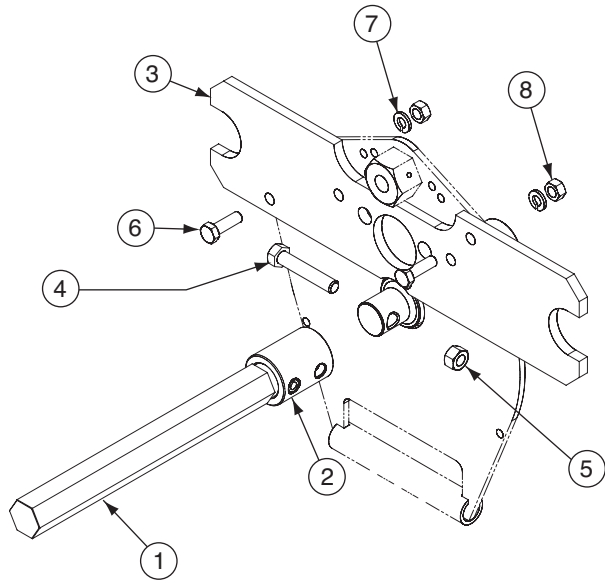
\*\*\* Indicates additional items required when ordering.

Lube Bearings, Items #10, #17, #32, and #35 with Contractor Special Grease with Moly (NGLI #2), or equivalent.

Lube Gear and Pinion, Items #19 and #25, with Lubriplate Extra Heavy Grease Shield or equivalent.

Item#	Part #	Qty.	Description
32	R-009-046-MCH	1	Feed Screw
33	R-020-026-OFS	2	Depth Stop Collar
34	R-012-026-OFS	1	Trunnion
35	R-011-026-OFS	1	Feed Nut
36	N-P02-003-012	2	Dowel Pin, $\frac{9}{16}$ Dia. X $\frac{3}{4}$ " Lg.
*37	N-S03-010-008	2	Socket Head Cap Screw, #10 - 24UNC X $\frac{1}{2}$ " Lg., Blk. Ox.
38	R-013-026-OFS	1	Front Plate
*39	N-S05-050-112	1	Shoulder Screw, $\frac{5}{16}$ Dia. X $1\frac{3}{4}$ " Lg., Blk. Ox.
*40	N-S22-010-008	4	Hex Washer Slotted Head Screw, #10-24UNC X $\frac{1}{2}$ " Lg., Pltd.
41	N-P02-004-008	2	Dowel Pin, $\frac{1}{4}$ Dia. X $\frac{1}{2}$ " Lg.
42	R-054-046-OFS	2	Pipe End Stop
43	N-T08-000-003	1	Spring Clip
44	R-018-046-MAS	1	Groove Depth Assembly for Steel, Aluminum and PVC
45	N-S22-010-006	1	Hex Washer Slotted Head Screw, #10-24UNC X $\frac{3}{8}$ " Lg., Pltd.
46	R-300-026-OFS	1	Crank Assembly
46A	N-M04-000-016	1	Revolving Handle
46B	R-301-026-ZLT	1	Crank Arm
47	N-S26-010-008	4	Screw, #10-24UNC X $\frac{1}{2}$ " Lg. Flthd. Sock. w/Nylon Insert, Blk. Ox.
48	ADV. #3835	1	Warning Label
49	R-027-226-OFS	2	"Keep Hands Away" Label
50	R-016-046-LBL	1	Groove Specifications Label
51A	R-003-046-OFS	1	Serial Number Tag, VE46
51B	R-201-046-LBL	1	Serial Number Tag, VE46P
52	N-M09-000-005	1	Chain, #12 Steel Single Jack (7 Links)
53	N-B03-150-001	1	Thrust Washer
54	N-B05-150-001	1	Thrust Washer
55	R-017-046-MCH	1	Gauge, Sch. 5, 10 & 20
56	R-020-046-MCH	1	Gauge, Sch. 40
57	N-S22-010-100	1	#10-24UNC X 1" Lg. Hex Washer Slot Head Screw, Pltd.
58	N-W01-010-000	1	Flat Washer, #10 Pltd.

## VE46 POWER DRIVE ADAPTER PLATE KIT



Item#	Part #	Qty.	Description
1	R-042-026-PLT	1	Drive Shaft
2	R-044-026-PLT	1	Drive Adapter
3	R-040-026-PLT	1	Power Drive Mounting Plate
4	N-S01-060-032	1	$\frac{3}{8}$ -16 UNC X 2" Lg. Hex Hd. Bolt, Pltd.
5	N-N08-060-000	1	$\frac{3}{8}$ -16 UNC Hex Nut with Nylon Insert, Pltd.
6	N-S01-050-100	2	$\frac{5}{16}$ -18 UNC X 1" Lg. Hex Hd. Cap Screw, Pltd.
7	N-W03-050-000	2	$\frac{5}{16}$ " Lock Washer, Pltd.
8	N-N01-050-000	2	$\frac{5}{16}$ -18 UNC Hex Nut, Pltd.

NOTE: The part number for the entire assembly is R-075-026-KIT.

**Victaulic® Factory Representatives and Distributor Stocks Worldwide**

Victaulic reserves the right to change product specifications, designs and standard equipment without notice and without obligation.