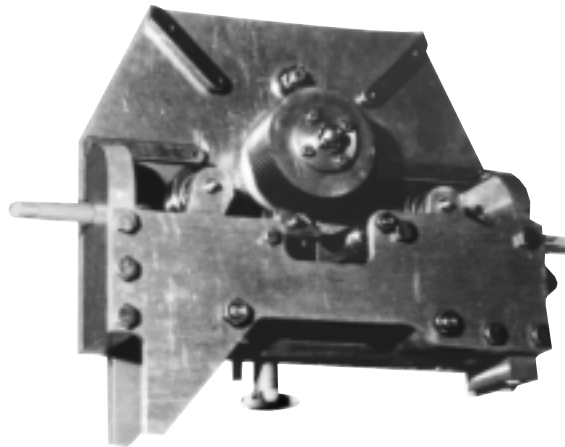




RP-824

REPAIR PARTS FOR VG-824 CUT-GROOVING TOOL

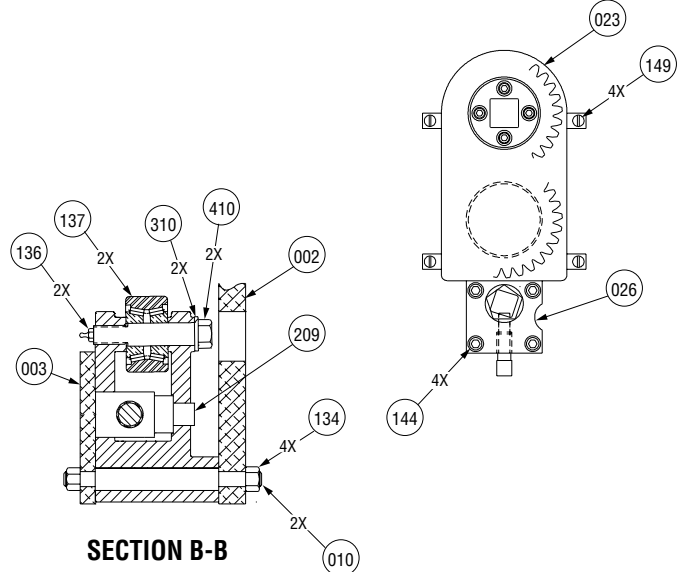
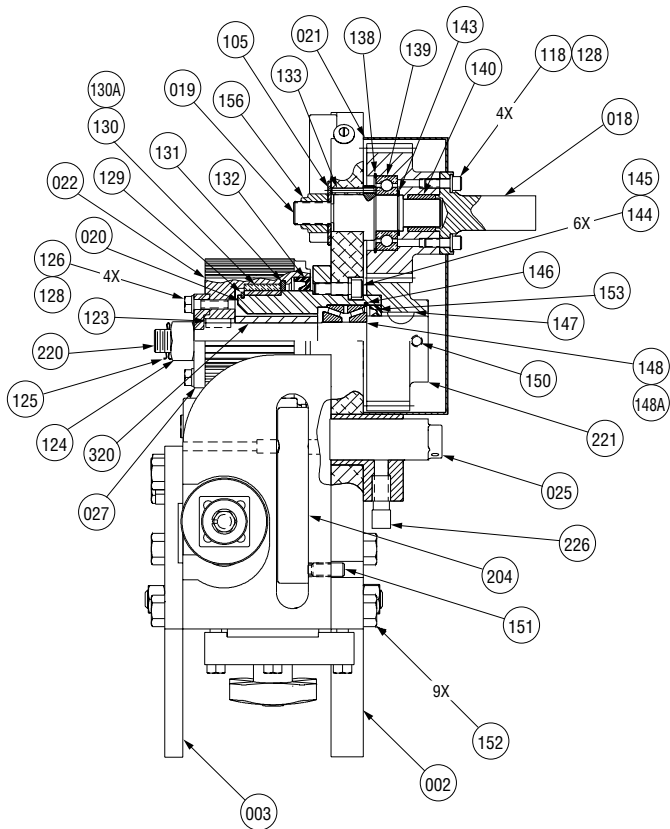


PARTS ORDERING INFORMATION

When ordering parts the following information is necessary for the Victaulic Tool Company to promptly process the order and send the correct part(s).

1. Tool Model Number VG-824
2. Tool Serial Number.
The Serial Number can be found on the back of the tool.
3. Quantity, Item Number, Part Number, Description.
Example: (2), 137, N-B06-250-003, Support Roll
4. Where to send the part(s).
Company Name. Address
5. To whose attention to send the part(s).
Person's Name.
6. Purchase Order Number

Parts may be ordered from the nearest Victaulic Sales Office. Consult the back page of this instruction manual for the nearest Victaulic Sales Office.



SECTION B-B

Item #	Part #	Qty.	Description
104	N-S01-060-100	1	3/8 - 16UNC x 1" Lg. Hex Hd. Cap Screw, Plttd.
105	N-W01-100-000	1	5/8" Flat Washer, Plttd.
106	N-S03-040-104	2	1/4 - 20UNC x 1 1/4" Lg. Socket Cap Screw, Blk. Ox.
107	N-S01-050-204	1	5/16 - 18UNC x 2 1/4" Hex Cap Screw, Plttd.
108	N-N01-050-000	2	5/16 - 18UNC Standard Hex Nut, Plttd.
109	N-W06-050-000	2	5/16" SAE Plain Washer, Plttd.
110	N-P80-000-008	1	5/64" Dia. x 1/2" Lg. Cotter Pin
112	N-B03-062-001	1	Push Rod Thrust Bearing
113	N-P01-004-102	1	1/4" Dia. x 1 1/8" Lg. Roll Pin
114	N-S14-010-008	4	10-32UNF x 2" Socket Head Screw, Blk. Ox.
116	N-N03-060-000	3	3/8 - 16UNC Jam Nut, Plttd.
117	N-N02-040-000	1	1/4 - 28UNF Hex Nut, Plttd.

Item #	Part #	Qty.	Description
118	N-S03-040-012	7	1/4 - 20UNC x 3/4" Lg. Socket Head Cap Screw, Plttd.
119	N-S01-050-112	3	5/16 - 18UNC x 1 3/4" Lg. Hex Head Screw, Plttd.
120	N-S01-080-104	6	1/2 - 13UNC x 1 1/4" Lg. Hex Head Cap Screw, Plttd.
121	N-S01-060-108	1	3/8 - 16UNC x 1 1/2" Hex Head Cap Screw, Plttd.
122	N-W03-060-000	1	3/8" Standard Lock Washer, Plttd.
123	N-K03-040-013	1	1/4" Square x 1 3/16" Lg. Key (Both Ends Round)
124	N-N11-100-000	1	5/8 - 11UNC Hex Castle Nut, Plttd.
125	N-P05-002-104	1	1/8" Dia. x 1 1/4" Lg. Cotter Pin
126	N-S01-040-100	12	1/4 - 20UNC x 1" Lg. Hex Head Cap Screw, Plttd.
128	N-W03-040-000	8	1/4" Lock Washer, Plttd.
129	N-T03-000-005	1	Drive Roll Support Retaining Ring
130	N-B02-275-001	1	Drive Roll Bearing
130A	N-B04-250-002	1	Bearing Race (Drive Roll Support)
131	N-T56-000-312	1	Drive Roll Retaining Ring
132	N-M11-000-005	1	Drive Roll Seal
133	N-P01-002-102	1	1/8" Dia. x 1 1/8" Lg. Roll Pin
134	N-N01-080-000	4	1/2 - 13UNC Hex Nut, Plttd.
135	N-P02-006-200	1	3/8" Dia. x 2" Lg. Dowel Pin
136	N-M01-000-007	2	Straight Grease Fitting 1/4"-28 Taper Thrd. 1/2" Lg.
137	N-B06-250-003	2	Support Roll
138	N-T53-000-204	1	Retaining Ring (Reversing Gear)
139	N-B01-098-001	1	Bearing (Reversing Gear)
140	N-B02-075-003	1	Bearing (Reversing Gear Shaft)
142	R-028-226-LBL	1	Instruction Warning Label
143	N-T54-000-096	1	Retaining Ring (Reversing Gear Shaft)
144	N-S03-050-100	10	5/16 - 18UNC x 1" Lg. Socket Head Cap Screw, Blk. Ox.
145	N-T03-100-000	6	5/16" Lock Washer, Plttd.
146	N-T55-000-200	1	Retaining Ring, Drive Roll Support (Rear)
147	N-K01-060-600	1	#606 Woodruff Key
148	N-B04-100-004	1	Bearing (Drive Roll Shaft)
148A	N-B04-100-005	1	Bearing Cup (Drive Roll Shaft)
149	N-S07-010-006	4	10-24UNC x 3/8" Lg. Round Head Machine Screw, Plttd.
150	N-S81-050-008	1	5/16 - 18UNC x 1/2" Lg. Cup Point Set Screw
151	N-M12-000-003	1	Spring Plunger, Right Side Handle
152	N-S01-080-112	9	1/2 - 13UNC x 1 3/4" Lg. Hex Hd. Cap Screw, Plttd.
153	N-M11-000-006	1	Drive Roll Support Seal
154	N-S01-040-104	2	1/4 - 20UNC x 1 1/4" Lg. Hex Head Cap Screw, Plttd.
155	N-S08-040-008	2	1/4 - 20UNC x 1/2" Lg. Truss Hd. Screw, Plttd.
156	N-N08-100-000	1	5/8 - 11UNC Elastic Stop Nut, Plttd.
204	R-204-824-AVG	1	Right Side Handle
205	R-205-824-AVG	1	Left Side Handle
208	R-208-824-AVG	1	Feed Screw Collar
209	R-209-824-AVG	1	Right Barrel Nut
212	R-212-824-AVG	1	Screw Plate
213	R-213-824-AVG	1	Right Swivel Arm Stop
214	R-214-824-AVG	1	Knife Arm Spring Nut
215	R-215-824-AVG	1	Knife Arm Pivot Trunnion
216	R-216-824-AVG	1	Stop Screw Spacer
217	R-217-824-MCH	1	Knife Spring Clamp
218	R-218-824-AVG	1	Knife Holder Support
220	R-220-824-AVG	1	Drive Roll Shaft
221	R-221-824-AVG	1	Drive Roll Gear
224	R-224-824-AVG	2	14" C.I. Pipe Stop
226	R-226-824-AVG	1	Pipe Stop Screw
308	R-308-824-AVG	1	Adjusting Key
310	R-310-824-AVG	2	Swivel Arm Bearing Washer
312	R-312-824-AVG	1	Grooved Depth Stop
314	R-314-824-AVG	2	Knife Arm Pivot Support
318	R-318-824-AVG	1	Knife Backup Screw
320	R-320-824-AVG	1	Drive Roll Shaft, Bearing Spacer
324	R-324-824-AVG	2	16"-24" C.I. Pipe Stop
410	R-410-824-AVG	2	Swivel Arm Bearing Stud
412	R-412-824-AVG	1	Groove Depth Stop Adjusting Screw
418	R-418-824-AVG	1	Clevis Pin
424	R-424-824-AVG	2	8"-12" Standard Pipe Stop
524	R-524-824-AVG	2	8"- C.I. Pipe Stop



www.victaulic.com

Victaulic Tool Company

Tool Shipments:

1326 Tatamy Road, Easton, PA 18045-7400

Sales & Lease Payments:

P.O. Box 8588-244, Phila., PA 19171-0244

CUSTOMER CARE CENTER

Phone: 1-800-PICK-VIC (1-800-742-5842)

e-mail: pickvic@victaulic.com

FAX: 610/923-3090

WORLD HEADQUARTERS

P.O. Box 31 • Easton, PA 18044-0031

4901 Kesslersville Road • Easton, PA, USA 18040

Phone: 610/559-3300 • FAX: 610/250-8817

VICTAULIC COMPANY OF AMERICA

P.O. Box 31 • Easton, PA 18044-0031

Phone: 610/559-3300 • Fax: 610/250-8817

Fire Protection Division Customer Care Centers

■ **SOUTHEAST FIRE PROTECTION**

Phone: 877/773-8322 • Fax: 877/776-9769

■ **NORTHEAST FIRE PROTECTION**

Phone: 888/265-0805 • Fax: 888/265-0918

■ **CENTRAL FIRE PROTECTION**

Phone: 888/448-3534 • Fax: 888/448-3595

■ **WESTERN FIRE PROTECTION**

Phone: 877/487-7231 • Fax: 877/487-7232

Victaulic Tool Company

P.O. Box 31 • Easton, PA 18044-0031

Phone: 610/559-3300 • Fax: 610/923-3090

Victaulic Municipal Division

1818 Vultee Street • Allentown, PA 18103

Phone: 610/559-3488 • Fax: 610/923-3170

Victaulic Technical Services Division

1818 Vultee Street • Allentown, PA 18103

Phone: 610/559-3488 • Fax: 610/923-3170

United States Distribution Centers

■ **NORTHEAST**

7 Forge Parkway • Franklin, MA 02038

Cust.Care: 800/742-5842 • Cust. Fax: 888/265-0926

■ **NEW YORK METRO**

4901 Kesslersville Road • Easton, PA 18040

Cust.Care: 800/742-5842 • Cust. Fax: 800/437-6573

■ **SOUTHEAST**

650 Coastline Drive • Yulee, FL 32097

Cust.Care: 800/742-5842 • Cust. Fax: 888/201-3468

■ **ATLANTIC**

166 Thorn Hill Road • Warrendale, PA 15086

Cust.Care: 800/742-5842 • Cust. Fax: 888/201-3517

■ **MIDWEST**

730 Thomas Drive • Bensenville, IL 60106

Cust.Care: 800/742-5842 • Cust. Fax: 888/265-2018

■ **GREAT LAKES**

23107 Commerce Drive • Farmington Hills, MI 48335

Cust.Care: 800/742-5842 • Cust. Fax: 800/564-0119

■ **CENTRAL STATES**

5900 Deramus Avenue • Kansas City, MO 64120

Cust.Care: 800/742-5842 • Cust. Fax: 888/448-3540

■ **MID-CONTINENT**

7177 Railspur Street • Houston, TX 77078

Cust.Care: 800/742-5842 • Cust. Fax: 888/448-3537

■ **PERMIAN BASIN**

2628 Remington Road • Odessa, TX 79763

Local Tel.: 915/332-1489 • Local Fax: 915/332-4924

■ **ROCKY MOUNTAIN**

5045 Paris Street • Denver, CO 80239

Cust.Care: 800/742-5842 • Cust. Fax: 888/448-3528

■ **PACIFIC - NORTH**

22633 83rd Ave. So. • Kent, WA 98032

Cust.Care: 800/742-5842 • Cust. Fax: 888/448-3530

■ **MID-ATLANTIC**

4901 Kesslersville Road • Easton, PA 18040

Cust.Care: 800/742-5842 • Cust. Fax: 800/696-6447

■ **PACIFIC - SOUTH**

20934 So. Santa Fe Ave. • Long Beach, CA 90810

Cust.Care: 800/742-5842 • Cust. Fax: 800/448-3542

VICTAULIC COMPANY OF CANADA

65 Worcester Road • Rexdale, Ontario • Canada M9W 5N7

Phone: 416/675-5575 • FAX: 416/675-5565 • e-mail: viccanda@victaulic.com

Canadian Sales Offices and Service Centers

■ **EASTERN**

975 rue Selkirk • Pointe Claire, PQ H9R 4S4

Phone: 514/426-3500 • FAX: 514/426-2818

■ **ONTARIO - NORTH**

1070 Elisabella Street • Sudbury, ON P3A 5K2

Phone: 705/560-9595 • FAX: 705/560-9490

■ **PACIFIC**

Unit 5, 7560 Vantage Way • Delta, BC V4G 1H1

Phone: 604/940-3301 • FAX: 604/940-3360

■ **ONTARIO - SOUTH**

65 Worcester Road • Rexdale, ON M9W 5N7

Phone: 416/675-5575 • FAX: 416/675-5729

■ **WESTERN**

15353 114th Avenue • Edmonton, AB T5M 3S9

Phone: 780/452-0680 • FAX: 780/452-2430

Victaulic Factory Representatives and Distributors Stock Worldwide

Victaulic reserves the right to change product specifications, designs and standard equipment without notice and without obligation.