



# RP-HCT908

REPAIR PARTS FOR  
HCT908 Hole Cutting Tool

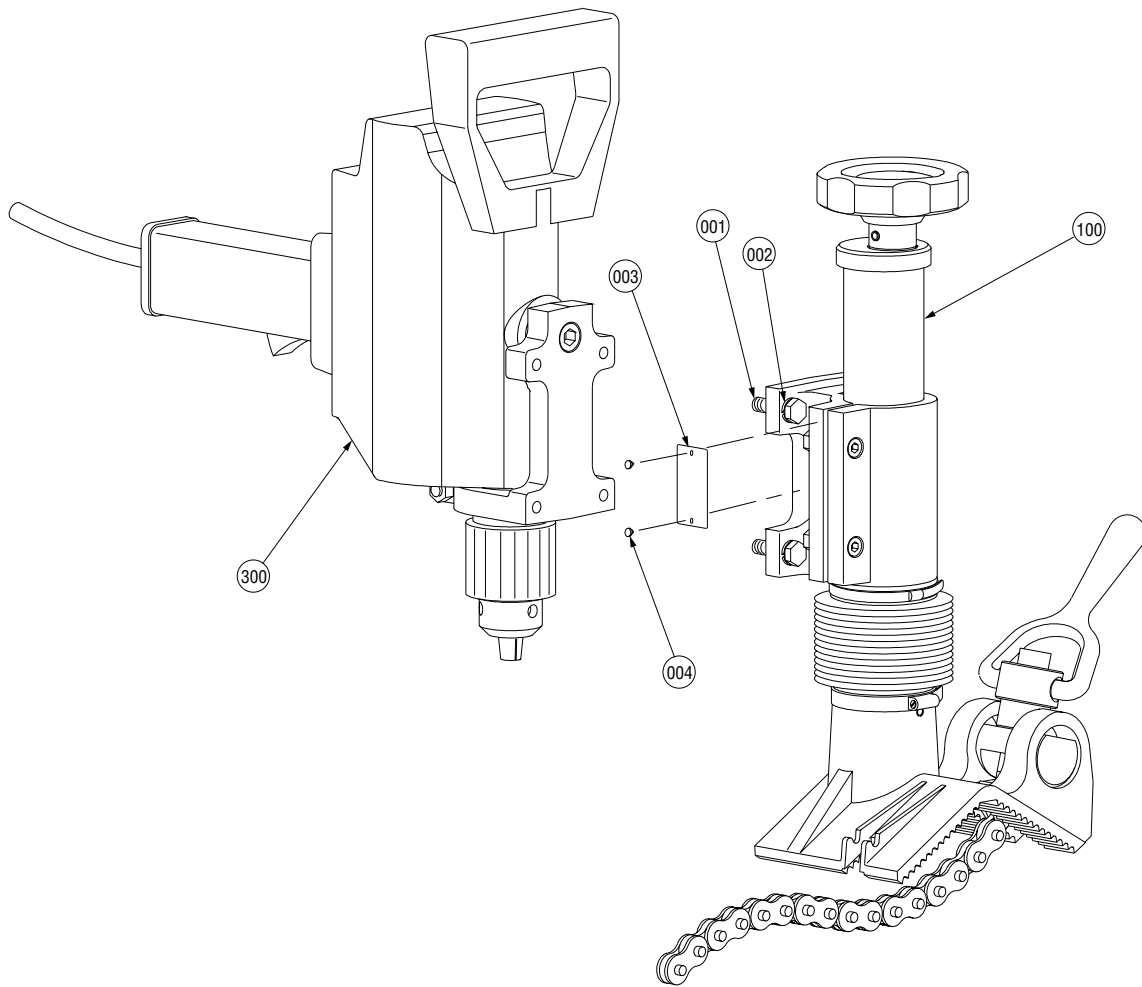


## PARTS ORDERING INFORMATION

When ordering parts the following information is necessary for the Victaulic Tool Company to promptly process the order and send the correct part(s).

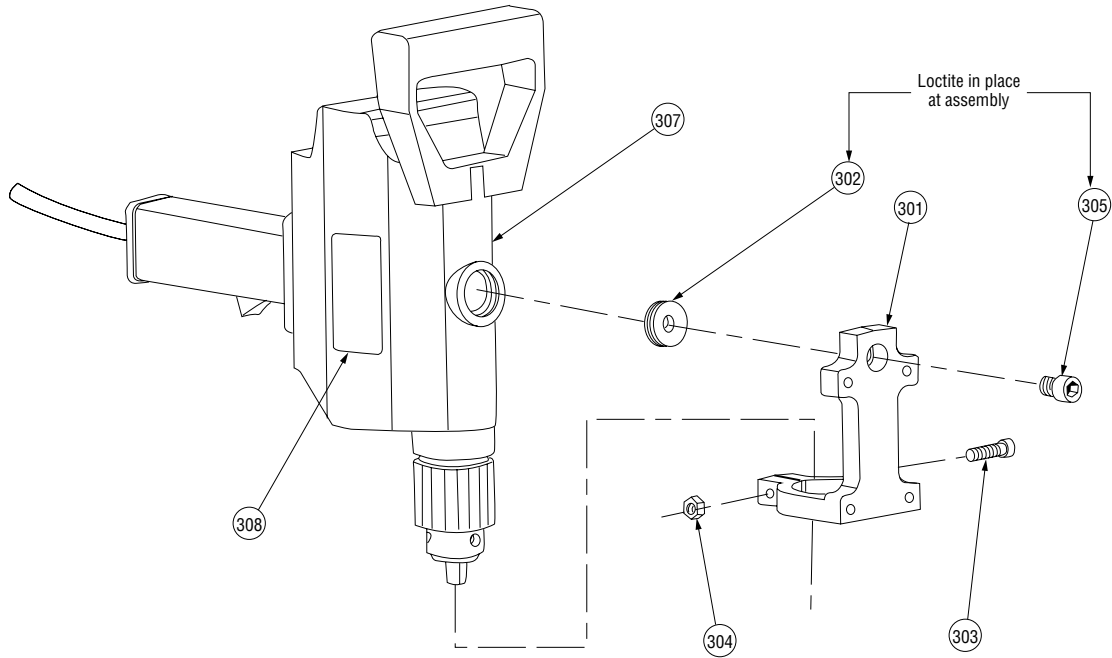
1. Tool Model Number. HCT908
2. Tool Serial Number.  
The Serial Number can be found on the side of the tool.
3. Quantity, Item Number, Part Number, Description.  
Example: (1), 302, R-302-904-HCT, Plug Adapter
4. Where to send the part(s).  
Company Name. Address
5. To whose attention to send the part(s).  
Person's Name.
6. Purchase Order Number

Parts may be ordered from the nearest Victaulic Sales Office. Consult Victaulic Tool Company for the nearest Victaulic Sales Office.



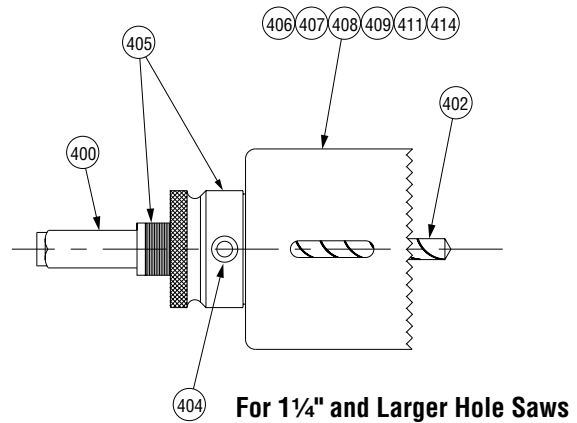
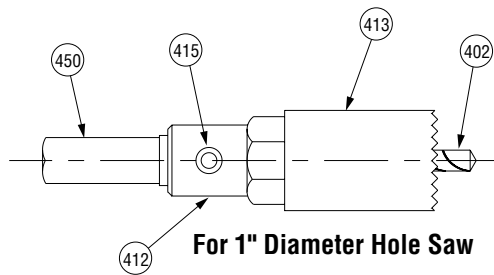
3129-1A

HCT908 MAIN ASSEMBLY			
Item #	Part #	Qty.	Description
000	R-000-904-001	1	Shipping Box (Not Shown)
001	N-S01-050-100	4	5/16 - 18UNC X 1.00 Lg. Hex Head Cap Screw, Pltd.
002	N-W03-050-000	4	5/16 Lockwasher, Pltd.
003	R-003-908-HCT	1	Serial No. Nameplate
004	N-T05-020-004	2	Metal Tack
100	R-100-904-HCT	1	Base Assembly
300	R-300-908-HCT	1	Hole Saw and Bracket Assembly
400	R-400-900-HCT	1	Arbor Assembly (Not Shown)



3129-2A

HCT908 HOLE SAW AND BRACKET ASSEMBLY			
Item #	Part #	Qty.	Description
301	R-301-904-HCT	1	Adapter Bracket Mach. for Milwaukee
302	R-302-904-HCT	1	Plug Adapter
303	N-S03-040-100	1	1/4 - 20UNC X 1.00 Lg. Socket Head Cap Screw, Blk. Ox.
304	N-N01-040-000	1	1/4 - 20UNC Hex Nut, Plated
305	N-S03-060-008	1	3/8 - 16UNC X .50 Lg. Socket Head Cap Screw, Blk. Ox.
307	N-M20-000-008	1	Milwaukee Hole Shooter
308	R-LAB-000-001	1	Victaulic Tool Company Label



3129-3A

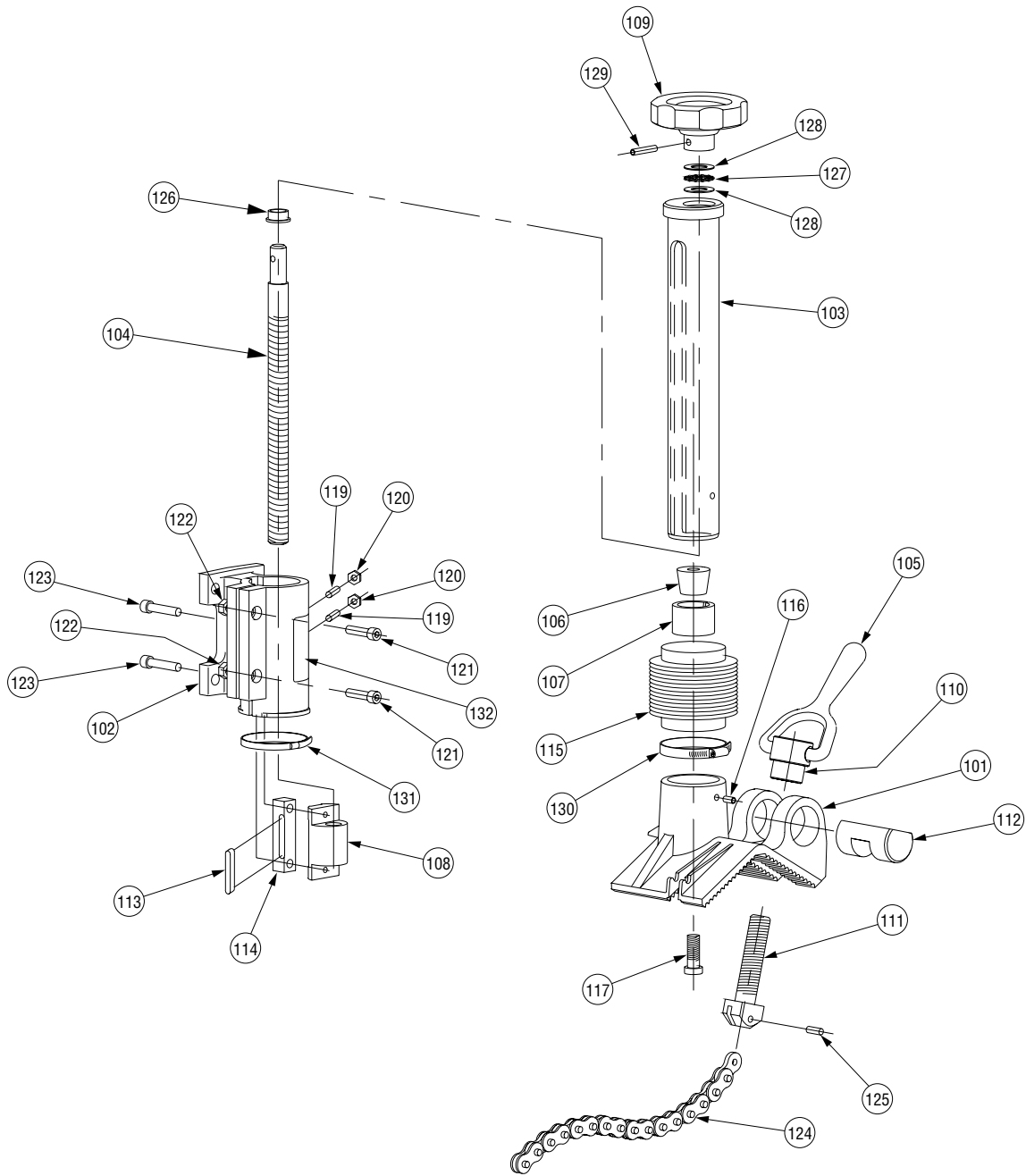
MANDREL ASSEMBLY – FOR 1" DIAMETER HOLE SAW			
Item #	Part #	Qty.	Description
450	R-450-900-HCT	Ref.	Mandrel Assembly
402	R-402-900-HCT	1	Slug Saver Drill Bit Assembly
412	N-M14-000-007	1	Mandrel
415	N-S90-050-004	1	5/16 - 24 UNF X 1/4" Nyloc Half Dog Set Screw
413	N-M18-000-011	*	Hole Saw – 1"

\*Hole saws purchased separately.

3129-4A

MANDREL ASSEMBLY – FOR 1 1/4" AND LARGER HOLE SAWS			
Item #	Part #	Qty.	Description
400	R-400-900-HCT	Ref.	Mandrel Assembly
402	R-402-900-HCT	1	Slug Saver Drill Bit Assembly
404	N-S90-050-010	1	5/16 - 24 UNF X 5/8" Nyloc Half Dog Set Screw
405	N-M14-000-025	1	Mandrel
406	N-M18-000-021	*	Hole Saw – 1 1/2"
407	N-M18-000-031	*	Hole Saw – 2"
408	N-M18-000-037	*	Hole Saw – 2 1/2"
409	N-M18-000-040	*	Hole Saw – 2 3/4"
411	N-M18-000-016	*	Hole Saw – 1 1/4"
414	N-M18-000-026	*	Hole Saw – 1 3/4"

\*Hole saws purchased separately.



3129-5A

HCT908 BASE ASSEMBLY			
Item #	Part #	Qty.	Description
101	R-101-904-HCT	1	Base, Machined
102	R-102-904-HCT	1	Travelling Bracket, Machined
103	R-103-904-HCT	1	Post
104	R-104-904-HCT	1	Feeder Rod
105	R-105-904-HCT	1	Chain Nut Handle
106	R-106-904-HCT	1	Taper Plug
107	R-107-904-HCT	1	Taper Bushing
108	R-108-904-HCT	1	Travelling Nut
109	R-116-904-HCT	1	Feed Knob
110	R-110-904-HCT	1	Chain Nut
111	R-111-904-HCT	1	Chain Screw
112	R-112-904-HCT	1	Trunion
113	R-113-904-HCT	1	Gib
114	R-114-904-HCT	1	Key
115	R-115-904-HCT	1	Bellows
116	N-P01-004-012	1	Roll Pin, 1/4 x 3/4 Lg.

3129-5A

HCT908 BASE ASSEMBLY			
Item #	Part #	Qty.	Description
117	N-S20-060-100	1	3/8-16UNC x 1" Lg. Low Hd. Skt. Cap Scr., Blk. Ox.
119	N-S94-010-100	2	10-32UNF x 1" Lg. Cup Pt. Set Screw
120	N-N02-010-000	2	10-32UNF Hex Nut, Pltd.
121	N-S03-040-100	2	1/4-20UNC x 1" Lg. Skt. Head Cap Screw, Blk. Ox.
122	N-N01-040-000	2	1/4-20UNC Hex Nut, Pltd.
123	N-S03-040-108	2	1/4-20UNC x 1 1/2" Lg. Skt. Hd. Cap Screw, Blk. Ox.
124	N-M09-000-008	30 in.	Morse Wrench Chain, 48 Links
125	*	1	.20 Dia. x .56 Lg. Pin
126	N-B21-050-001	1	Flange Bearing
127	N-B03-050-001	1	Bearing
128	N-B05-050-001	2	Thrust Washer
129	N-P01-003-100	1	3/16 x 1" Lg. Roll Pin
130	N-M39-000-001	1	Hose Clamp, Stainless Steel 2 1/2" Diameter
131	N-M39-000-002	1	Clamp, Plastic Ty-Rap
132	R-052-900-LBL	1	Warning Label

\*Supplied with Item 124.