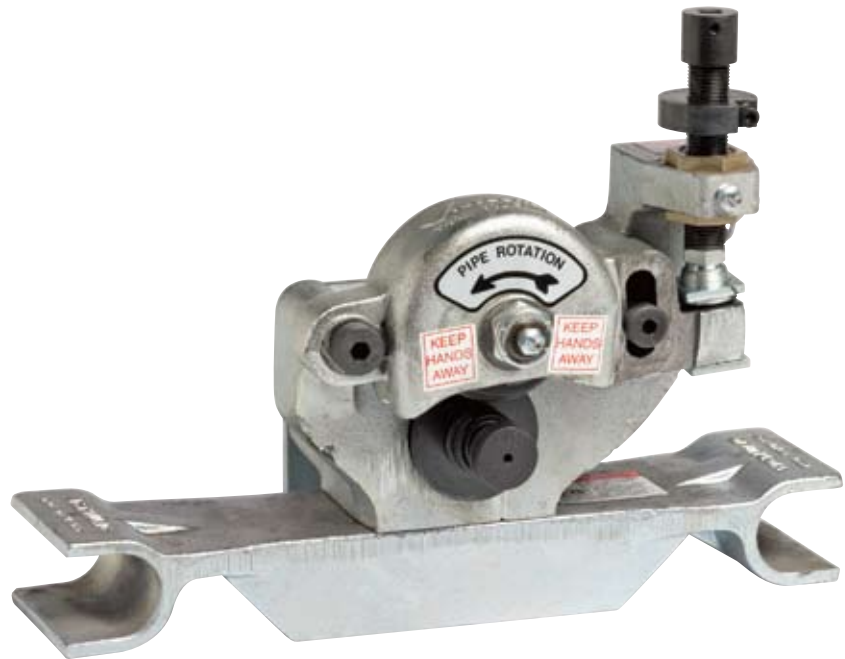


Roll Grooving Tool

VE226



PARTS ORDERING INFORMATION

When ordering parts, the following information is necessary for Victaulic to process the order promptly:

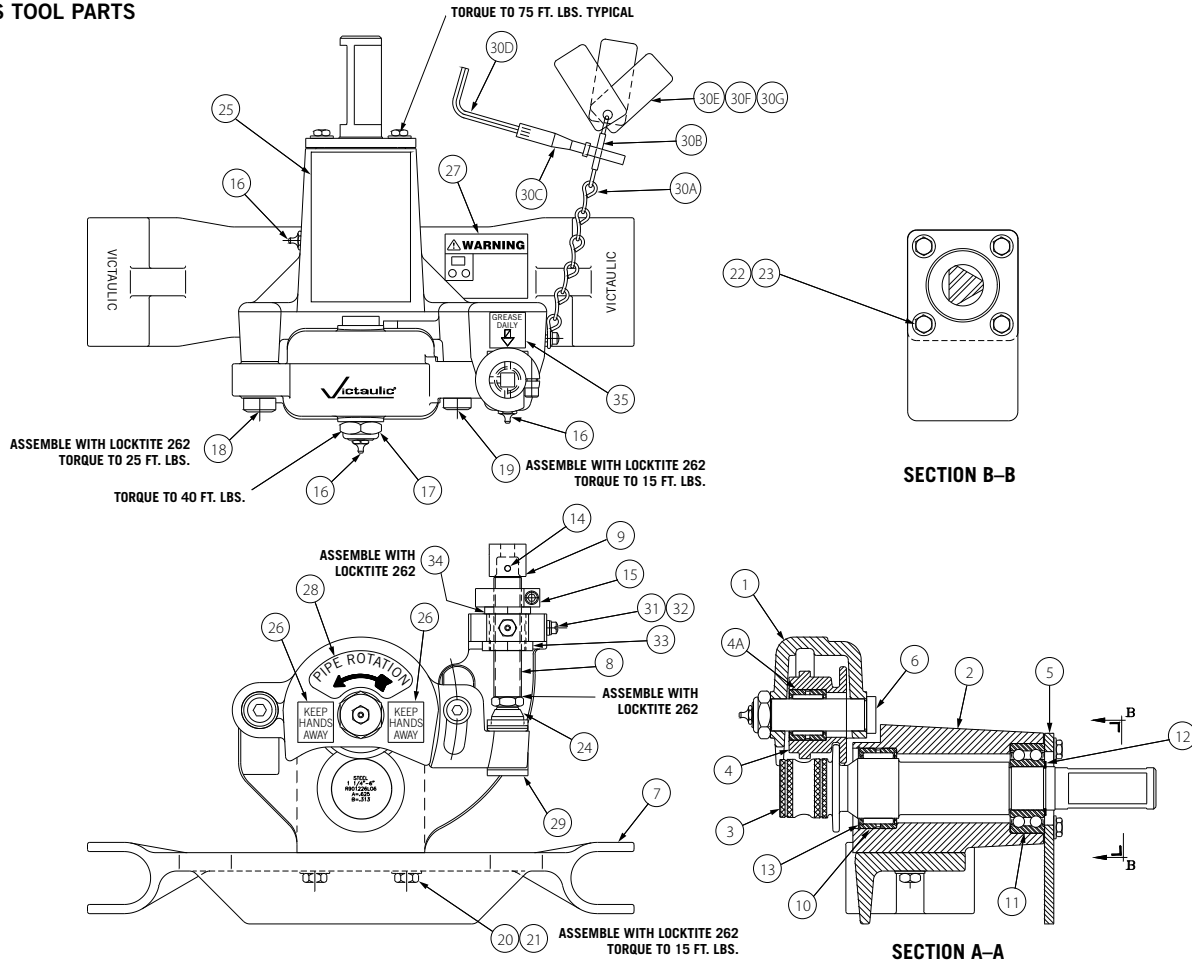
1. Tool Model Number – VE226
2. Tool Serial Number – The Serial Number can be found on the side of the tool.
3. Quantity, Item Number, Part Number, Description –
Example: (1), 6, R-022-226-MCH, Upper Roll Shaft
4. Where to send the part(s) – Company Name and Address
5. To whose attention to send the part(s)
6. Purchase Order Number

Parts may be ordered from the nearest Victaulic Sales Office listed on the last page.

Roll Grooving Tool

VE226

VE226S TOOL PARTS



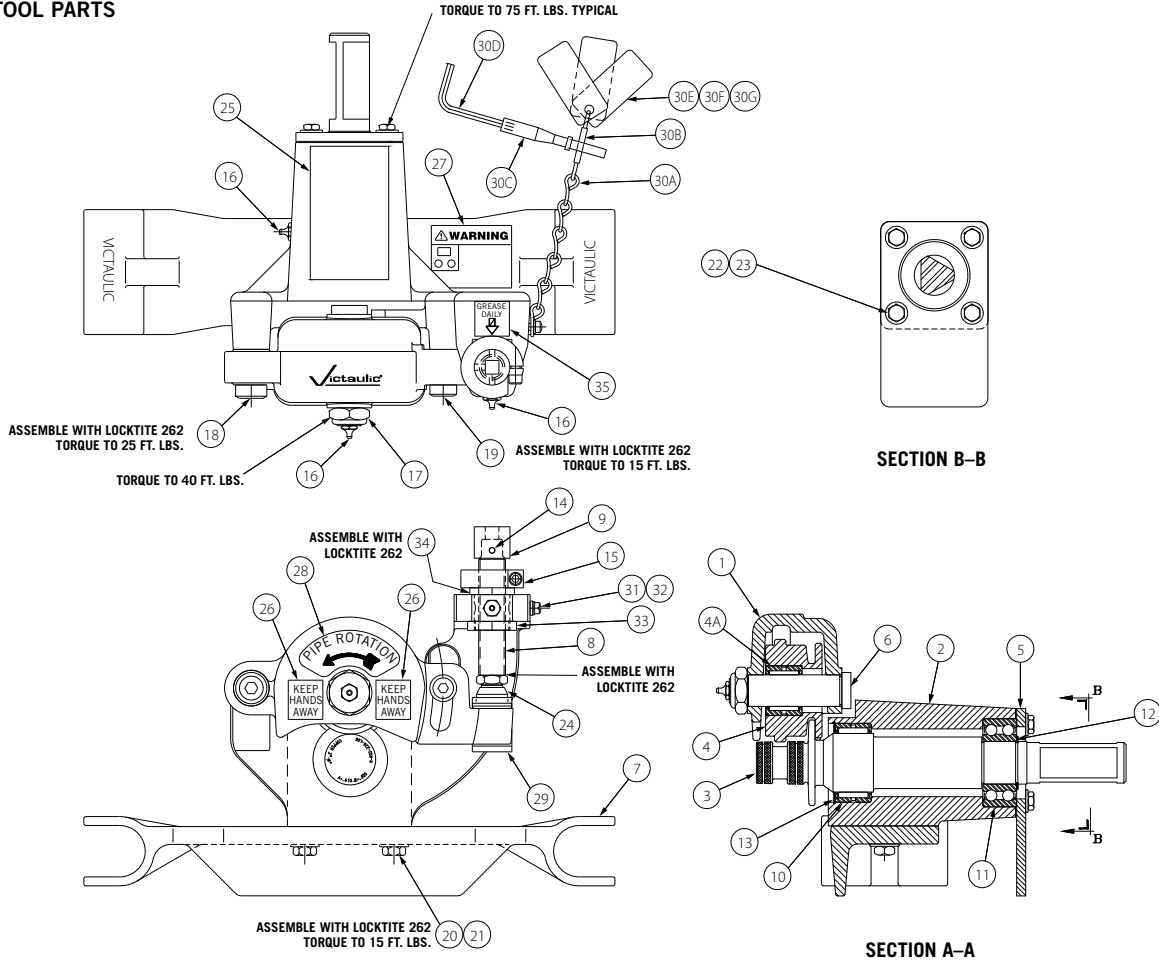
Item #	Part #	Qty.	Description
1	R-015-226-MCH	1	Roll Arm
2	R-013-226-MCH	1	Body
3	R-901-226-L06	1	Lower Roll, Steel
4	R-901-226-U06	1	Upper Roll, Steel
4A	N-B02-087-001	1	Bearing
5	R-005-226-PLT	1	Bearing Retainer
6	R-022-226-MCH	1	Upper Roll Shaft
7	R-016-226-PLT	1	Torque Arm
8	R-017-226-MCH	1	Ram Shaft
9	R-018-226-MCH	1	Drive Socket
10	N-B02-162-001	1	Bearing
11	N-B01-118-001	1	Bearing, 20° - 30° contact angle and 1 seal 30 mm I.D. x 62 mm O.D. x 23.8 mm wide
12	N-T03-000-009	1	Snap Ring
13	N-T03-000-008	1	Snap Ring
14	N-P08-000-100	1	Shear Pin, 0.156 x 1.00 Long
15	R-021-226-MCH	1	Locking Collar
16	N-M01-000-002	3	Straight Grease Fitting, 1/8" - NPT
17	N-N14-120-000	1	3/4 - 16 UNF Nylon Insert Locknut Thin (.391/.421 Thick)
18	R-019-226-MCH	1	Socket Shoulder Screw
19	R-020-226-MCH	1	Socket Shoulder Screw
20	N-S01-060-100	2	3/8 - 16 UNC x 1.00 Lg. Hex Hd. Cap Screw, Pltd.

Item #	Part #	Qty.	Description
21	N-W01-060-000	2	Washer, 3/8" SAE, Pltd.
22	N-S01-040-012	4	1/4 - 20 UNC x .75 Lg. Hex Hd. Cap Screw, Pltd.
23	N-W06-040-000	4	Washer .25 SAE, Pltd.
24	R-018-106-MCH	1	Toggle Pad
25	R-024-226-LBL	1	Label - Steel Groove Specifications
26	R-027-226-LBL	2	Label - Keep Hands Away
27	R-028-226-LBL	1	Label - Warning Read Instructions
28	R-026-226-LBL	1	Label - Pipe Rotation
29	R-019-226-PLT	1	Roll Arm Lifter
30	R-030-226-0FS	1	Groove Depth Gauge Assembly
30A	N-M09-000-005	.5	Chain
30B	N-M40-000-001	1	Chain Connector
30C	N-E90-000-065	1	Hex Key Holder
30D	N-M14-000-002	1	3/16" Hex Key
30E	R-055-226-PLT	1	Gauge, 1 1/4 - 2"
30F	R-056-226-PLT	1	Gauge, 2 1/2 - 3"
30G	R-057-226-PLT	1	Gauge, 4 - 6"
31	N-S12-010-008	1	10 - 24 UNC x .50 Lg. Slotted Fillister Hd. Mch. Screw, Pltd.
32	N-W06-010-000	1	Washer #10 SAE, Pltd.
33	R-048-226-MCH	1	Body Insert
34	R-046-226-MCH	1	Body Nut
35	R-049-226-LBL	1	Label - Grease Daily

Roll Grooving Tool

VE226

VE226P TOOL PARTS



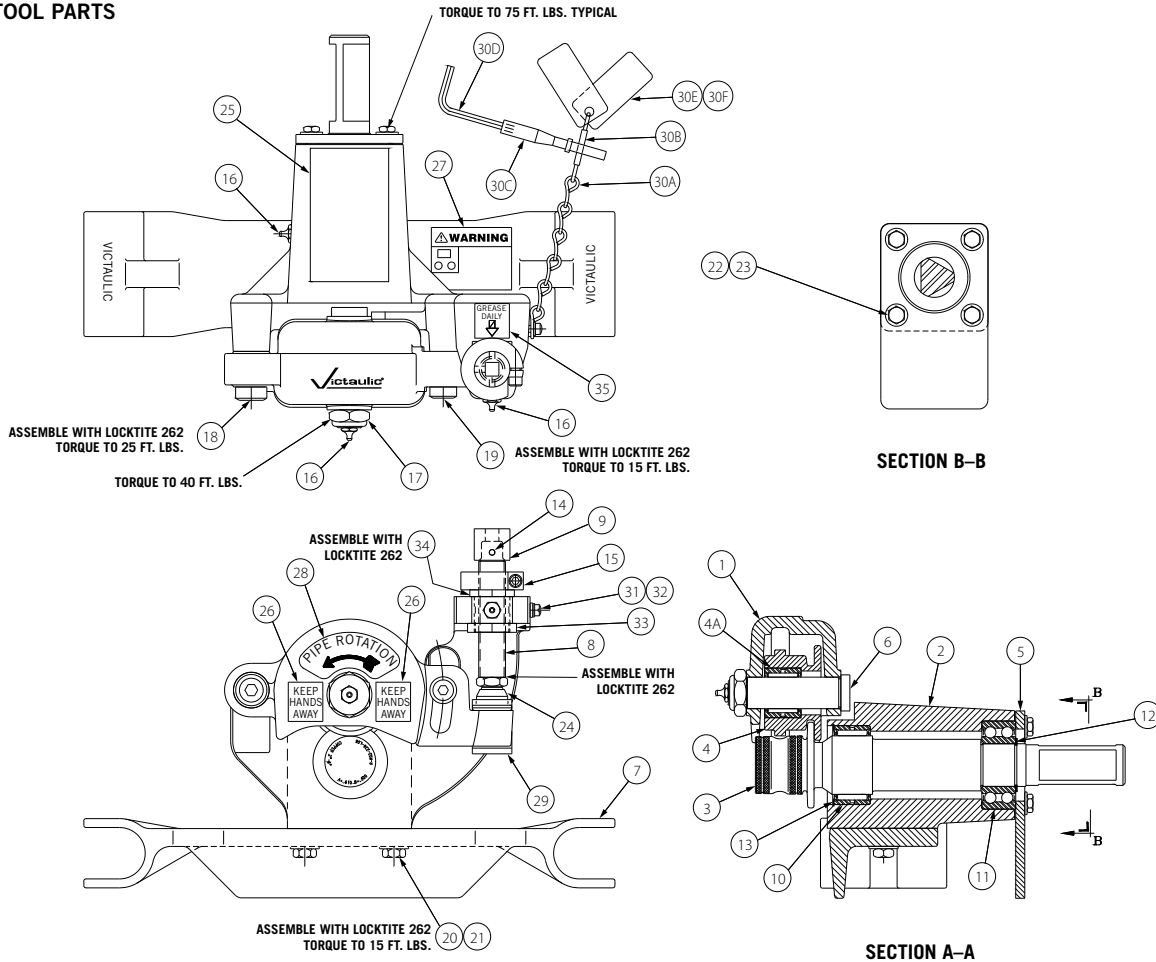
Item #	Part #	Qty.	Description
1	R-015-226-MCH	1	Roll Arm
2	R-013-226-MCH	1	Body
3	R-P01-226-L06	1	Lower Roll, PVC/Aluminum
4	R-P01-226-U06	1	Upper Roll, PVC/Aluminum
4A	N-B02-087-001	1	Bearing
5	R-005-226-PLT	1	Bearing Retainer
6	R-022-226-MCH	1	Upper Roll Shaft
7	R-016-226-PLT	1	Torque Arm
8	R-017-226-MCH	1	Ram Shaft
9	R-018-226-MCH	1	Drive Socket
10	N-B02-162-001	1	Bearing
11	N-B01-118-001	1	Bearing, 20° - 30° contact angle and 1 seal 30 mm I.D. x 62 mm O.D. x 23.8 mm wide
12	N-T03-000-009	1	Snap Ring
13	N-T03-000-008	1	Snap Ring
14	N-P08-000-100	1	Shear Pin, 0.156 x 1.00 Long
15	R-021-226-MCH	1	Locking Collar
16	N-M01-000-002	3	Straight Grease Fitting, 1/8" NPT
17	N-N14-120-000	1	3/4" - 16 UNF Nylon Insert Locknut Thin (.391/.421 Thick)
18	R-019-226-MCH	1	Socket Shoulder Screw
19	R-020-226-MCH	1	Socket Shoulder Screw
20	N-S01-060-100	2	3/8" - 16 UNC x 1.00 Lg. Hex Hd. Cap Screw, Pltd.

Item #	Part #	Qty.	Description
21	N-W01-060-000	2	Washer, 3/8" SAE, Pltd.
22	N-S01-040-012	4	1/4" - 20 UNC x .75 Lg. Hex Hd. Cap Screw, Pltd.
23	N-W06-040-000	4	Washer .25 SAE, Pltd.
24	R-018-106-MCH	1	Toggle Pad
25	R-602-226-LBL	1	Label - PVC/Aluminum Groove Specifications
26	R-027-226-LBL	2	Label - Keep Hands Away
27	R-028-226-LBL	1	Label - Warning Read Instructions
28	R-026-226-LBL	1	Label - Pipe Rotation
29	R-019-226-PLT	1	Roll Arm Lifter
30	R-030-226-0FS	1	Groove Depth Gauge Assembly
30A	N-M09-000-005	.5	Chain
30B	N-M40-000-001	1	Chain Connector
30C	N-E90-000-065	1	Hex Key Holder
30D	N-M14-000-002	1	3/16" Hex Key
30E	R-055-226-PLT	1	Gauge, 1 1/4" - 2"
30F	R-056-226-PLT	1	Gauge, 2 1/2" - 3"
30G	R-057-226-PLT	1	Gauge, 4" - 6"
31	N-S12-010-008	1	10 - 24 UNC x .50 Lg. Slotted Fillister Hd. Mch. Screw, Pltd.
32	N-W06-010-000	1	Washer #10 SAE, Pltd.
33	R-048-226-MCH	1	Body Insert
34	R-046-226-MCH	1	Body Nut
35	R-049-226-LBL	1	Label - Grease Daily

Roll Grooving Tool

VE226

VE226C TOOL PARTS



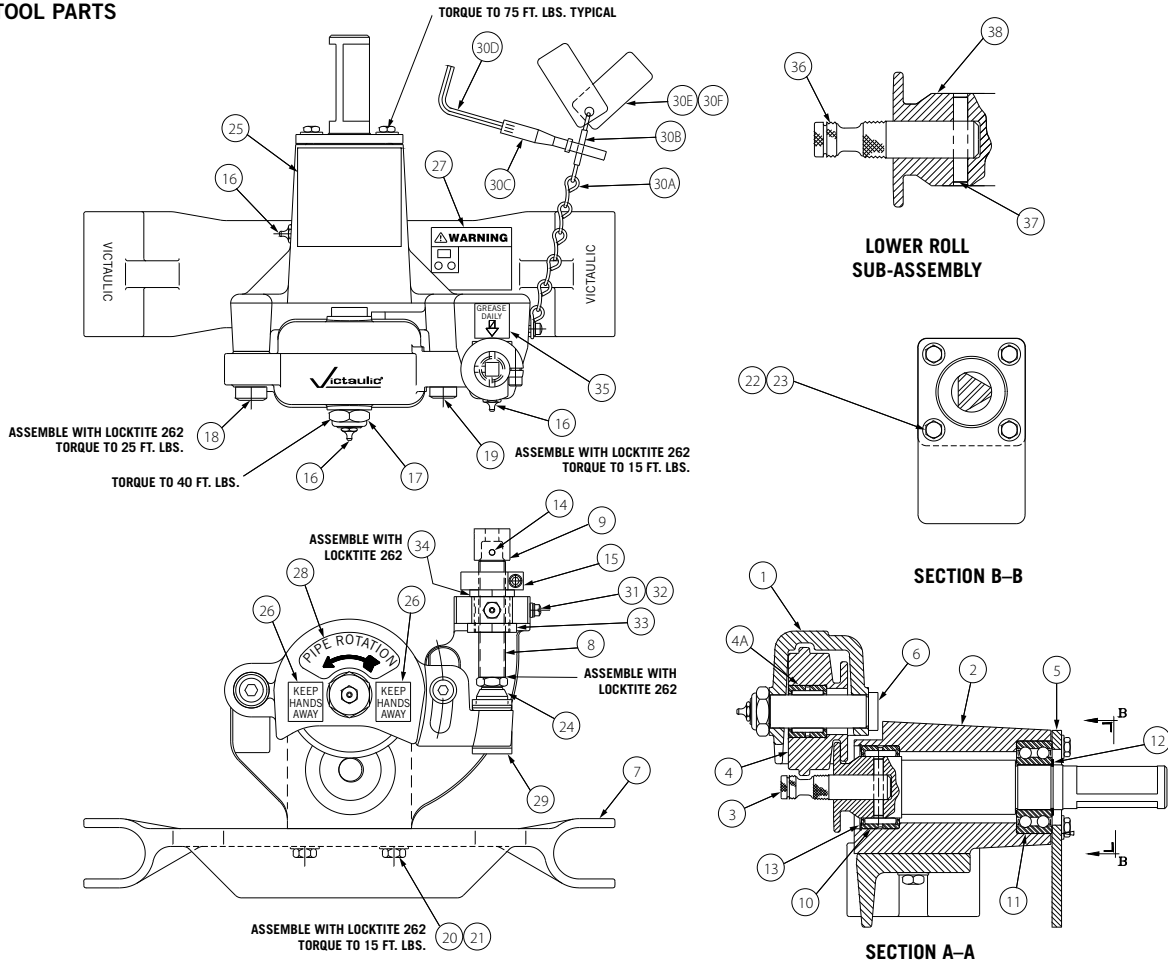
Item #	Part #	Qty.	Description
1	R-015-226-MCH	1	Roll Arm
2	R-013-226-MCH	1	Body
3	R-R02-226-L06	1	Lower Roll, Copper
4	R-R02-226-U06	1	Upper Roll, Copper
4A	N-B02-087-001	1	Bearing
5	R-005-226-PLT	1	Bearing Retainer
6	R-022-226-MCH	1	Upper Roll Shaft
7	R-016-226-PLT	1	Torque Arm
8	R-017-226-MCH	1	Ram Shaft
9	R-018-226-MCH	1	Drive Socket
10	N-B02-162-001	1	Bearing
11	N-B01-118-001	1	Bearing, 20° - 30° contact angle and 1 seal 30 mm I.D. x 62 mm O.D. x 23.8 mm wide
12	N-T03-000-009	1	Snap Ring
13	N-T03-000-008	1	Snap Ring
14	N-P08-000-100	1	Shear Pin, 0.156 x 1.00 Long
15	R-021-226-MCH	1	Locking Collar
16	N-M01-000-002	3	Straight Grease Fitting, 1/8" - NPT
17	N-N14-120-000	1	3/4 - 16 UNF Nylon Insert Locknut Thin (.391/.421 Thick)
18	R-019-226-MCH	1	Socket Shoulder Screw
19	R-020-226-MCH	1	Socket Shoulder Screw
20	N-S01-060-100	2	3/8 - 16 UNC x 1.00 Lg. Hex Hd. Cap Screw, Pltd.

Item #	Part #	Qty.	Description
21	N-W01-060-000	2	Washer, 3/8" SAE, Pltd.
22	N-S01-040-012	4	1/4 - 20 UNC x .75 Lg. Hex Hd. Cap Screw, Pltd.
23	N-W06-040-000	4	Washer .25 SAE, Pltd.
24	R-018-106-MCH	1	Toggle Pad
25	R-023-226-LBL	1	Label - Copper Groove Specifications
26	R-027-226-LBL	2	Label - Keep Hands Away
27	R-028-226-LBL	1	Label - Warning Read Instructions
28	R-026-226-LBL	1	Label - Pipe Rotation
29	R-019-226-PLT	1	Roll Arm Lifter
30	R-030-226-0FS	1	Groove Depth Gauge Assembly
30A	N-M09-000-005	.5	Chain
30B	N-M40-000-001	1	Chain Connector
30C	N-E90-000-065	1	Hex Key Holder
30D	N-M14-000-002	1	3/16" Hex Key
30E	R-055-226-PLT	1	Gauge, 1 1/4 - 2"
30F	R-056-226-PLT	1	Gauge, 2 1/2 - 3"
30G	R-057-226-PLT	1	Gauge, 4 - 6"
31	N-S12-010-008	1	10 - 24 UNC x .50 Lg. Slotted Fillister Hd. Mch. Screw, Pltd.
32	N-W06-010-000	1	Washer #10 SAE, Pltd.
33	R-048-226-MCH	1	Body Insert
34	R-046-226-MCH	1	Body Nut
35	R-049-226-LBL	1	Label - Grease Daily

Roll Grooving Tool

VE226

VE226B TOOL PARTS



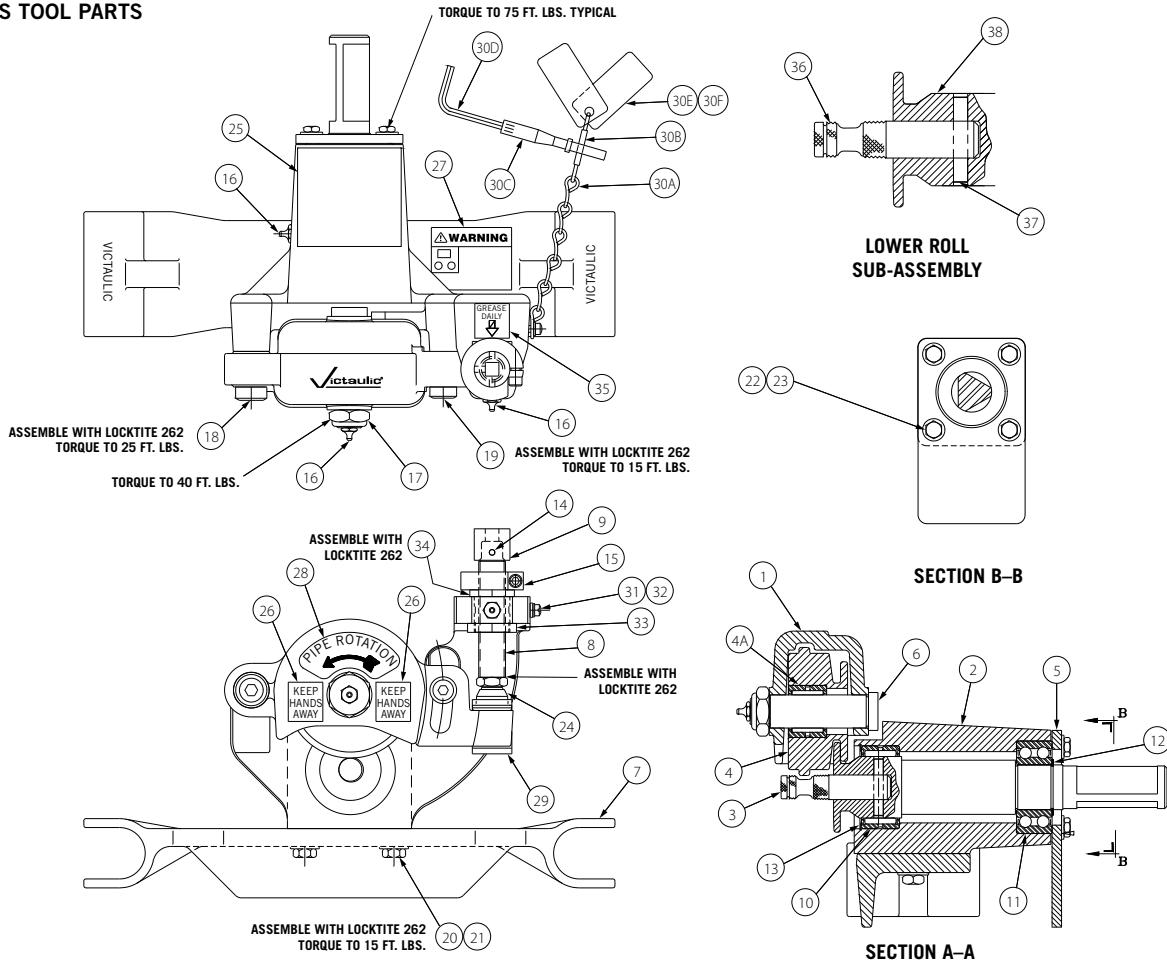
Item #	Part #	Qty.	Description
1	R-015-226-MCH	1	Roll Arm
2	R-013-226-MCH	1	Body
3	R-900-226-A01	1	Lower Roll, Sub, Assembly
4	R-900-226-U01	1	Upper Roll, Steel
4A	N-B02-087-001	1	Bearing
5	R-005-226-PLT	1	Bearing Retainer
6	R-022-226-MCH	1	Upper Roll Shaft
7	R-016-226-PLT	1	Torque Arm
8	R-017-226-MCH	1	Ram Shaft
9	R-018-226-MCH	1	Drive Socket
10	N-B02-162-001	1	Bearing
11	N-B01-118-001	1	Bearing, 20° - 30° contact angle and 1 seal 30 mm I.D. x 62 mm O.D. x 23.8 mm wide
12	N-T03-000-009	1	Snap Ring
13	N-T03-000-008	1	Snap Ring
14	N-P08-000-100	1	Shear Pin, 0.156 x 1.00 Long
15	R-021-226-MCH	1	Locking Collar
16	N-M01-000-002	3	Straight Grease Fitting, 1/8" NPT
17	N-N14-120-000	1	3/4 - 16 UNF Nylon Insert Locknut Thin (.391/.421 Thick)
18	R-019-226-MCH	1	Socket Shoulder Screw
19	R-020-226-MCH	1	Socket Shoulder Screw
20	N-S01-060-100	2	3/8 - 16 UNC x 1.00 Lg. Hex Hd. Cap Screw, Pltd.
21	N-W01-060-000	2	Washer, 3/8" SAE, Pltd.

Item #	Part #	Qty.	Description
22	N-S01-040-012	4	1/4 - 20 UNC x .75 Lg. Hex Hd. Cap Screw, Pltd.
23	N-W06-040-000	4	Washer .25 SAE, Pltd.
24	R-018-106-MCH	1	Toggle Pad
25	R-039-226-LBL	1	Label - Steel Groove Specifications
26	R-027-226-LBL	2	Label - Keep Hands Away
27	R-028-226-LBL	1	Label - Warning Read Instructions
28	R-026-226-LBL	1	Label - Pipe Rotation
29	R-019-226-PLT	1	Roll Arm Lifter
30	R-040-226-0FS	1	Groove Depth Gauge Assembly
30A	N-M09-000-005	.5	Chain
30B	N-M40-000-001	1	Chain Connector
30C	N-E90-000-065	1	Hex Key Holder
30D	N-M14-000-002	1	3/16" Hex Key
30E	R-058-226-PLT	1	Gauge, 3/4"
30F	R-059-226-PLT	1	Gauge, 1 - 1 1/2"
31	N-S12-010-008	1	10 - 24 UNC x .50 Lg. Slotted Fillister Hd. Mch. Screw, Pltd.
32	N-W06-010-000	1	Washer #10 SAE, Pltd.
33	R-048-226-MCH	1	Body Insert
34	R-046-226-MCH	1	Body Nut
35	R-049-226-LBL	1	Label - Grease Daily
36	R-900-226-L01	1	Lower Roll, Steel
37	N-P01-004-108	1	Spring Pin, .25 x 1.50 Lg.
38	R-038-226-MCH	1	Main Shaft

Roll Grooving Tool

VE226

VE226BSS TOOL PARTS



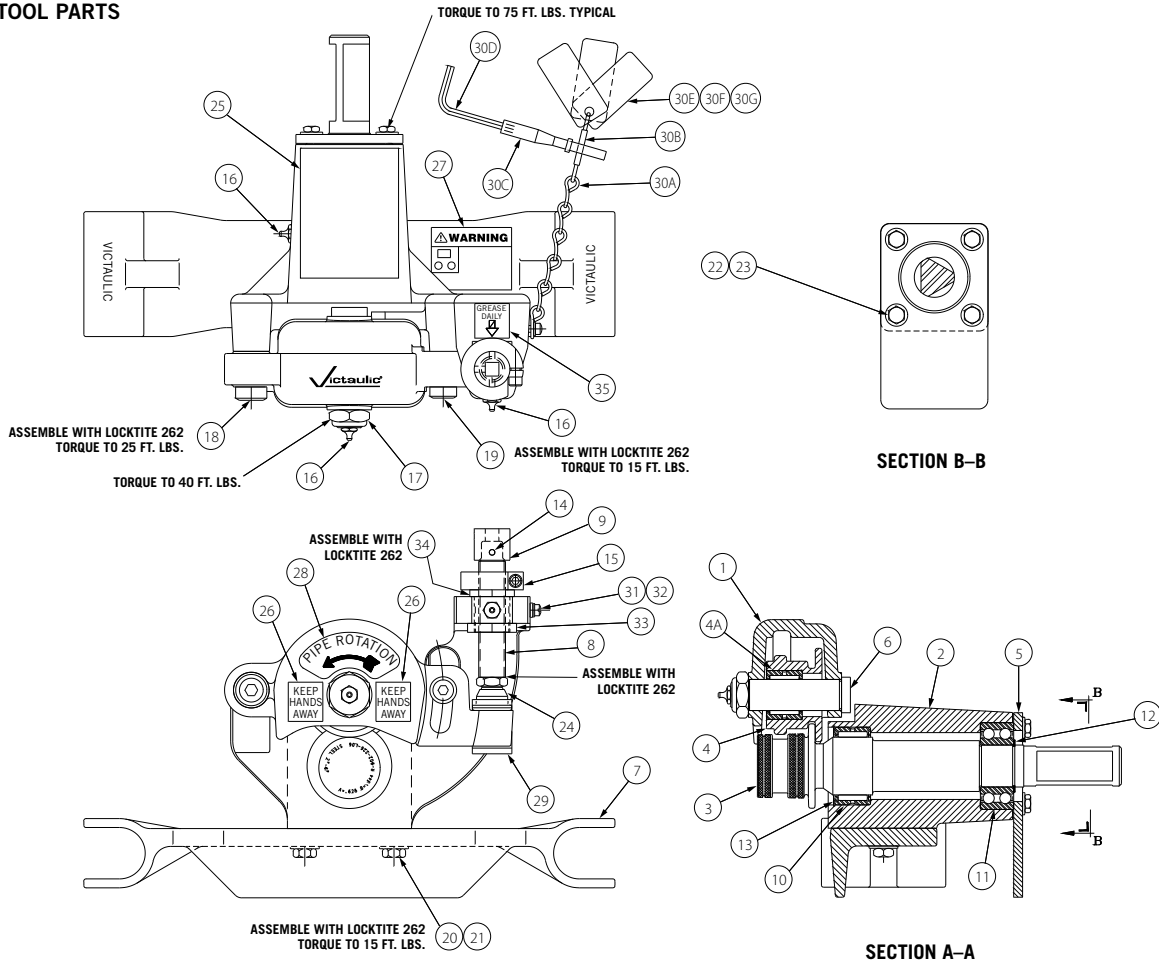
Item #	Part #	Qty.	Description
1	R-015-226-MCH	1	Roll Arm
2	R-013-226-MCH	1	Body
3	R-X00-226-A01	1	Lower Roll, Sub, Assembly
4	R-X00-226-U01	1	Upper Roll, Stainless Steel
4A	N-B02-087-001	1	Bearing
5	R-005-226-PLT	1	Bearing Retainer
6	R-022-226-MCH	1	Upper Roll Shaft
7	R-016-226-PLT	1	Torque Arm
8	R-017-226-MCH	1	Ram Shaft
9	R-018-226-MCH	1	Drive Socket
10	N-B02-162-001	1	Bearing
11	N-B01-118-001	1	Bearing, 20° - 30° contact angle and 1 seal 30 mm I.D. x 62 mm O.D. x 23.8 mm wide
12	N-T03-000-009	1	Snap Ring
13	N-T03-000-008	1	Snap Ring
14	N-P08-000-100	1	Shear Pin, 0.156 x 1.00 Long
15	R-021-226-MCH	1	Locking Collar
16	N-M01-000-002	3	Straight Grease Fitting, 1/8" - NPT
17	N-N14-120-000	1	3/4" - 16 UNF Nylon Insert Locknut Thin (.391/421 Thick)
18	R-019-226-MCH	1	Socket Shoulder Screw
19	R-020-226-MCH	1	Socket Shoulder Screw
20	N-S01-060-100	2	3/8" - 16 UNC x 1.00 Lg. Hex Hd. Cap Screw, Pltd.
21	N-W01-060-000	2	Washer, 3/8" SAE, Pltd.

Item #	Part #	Qty.	Description
22	N-S01-040-012	4	1/4" - 20 UNC x .75 Lg. Hex Hd. Cap Screw, Pltd.
23	N-W06-040-000	4	Washer .25 SAE, Pltd.
24	R-018-106-MCH	1	Toggle Pad
25	R-039-226-LBL	1	Label - Steel Groove Specifications
26	R-027-226-LBL	2	Label - Keep Hands Away
27	R-028-226-LBL	1	Label - Warning Read Instructions
28	R-026-226-LBL	1	Label - Pipe Rotation
29	R-019-226-PLT	1	Roll Arm Lifter
30	R-040-226-0FS	1	Groove Depth Gauge Assembly
30A	N-M09-000-005	.5	Chain
30B	N-M40-000-001	1	Chain Connector
30C	N-E90-000-065	1	Hex Key Holder
30D	N-M14-000-002	1	3/16" Hex Key
30E	R-058-226-PLT	1	Gauge, 3/4"
30F	R-059-226-PLT	1	Gauge, 1 - 1 1/2"
31	N-S12-010-008	1	10 - 24 UNC x .50 Lg. Slotted Fillister Hd. Mch. Screw, Pltd.
32	N-W06-010-000	1	Washer #10 SAE, Pltd.
33	R-048-226-MCH	1	Body Insert
34	R-046-226-MCH	1	Body Nut
35	R-049-226-LBL	1	Label - Grease Daily
36	R-900-226-L01	1	Lower Roll, Steel
37	N-P01-004-108	1	Spring Pin, .25 x 1.50 Lg.
38	R-038-226-MCH	1	Main Shaft

Roll Grooving Tool

VE226

VE226M TOOL PARTS



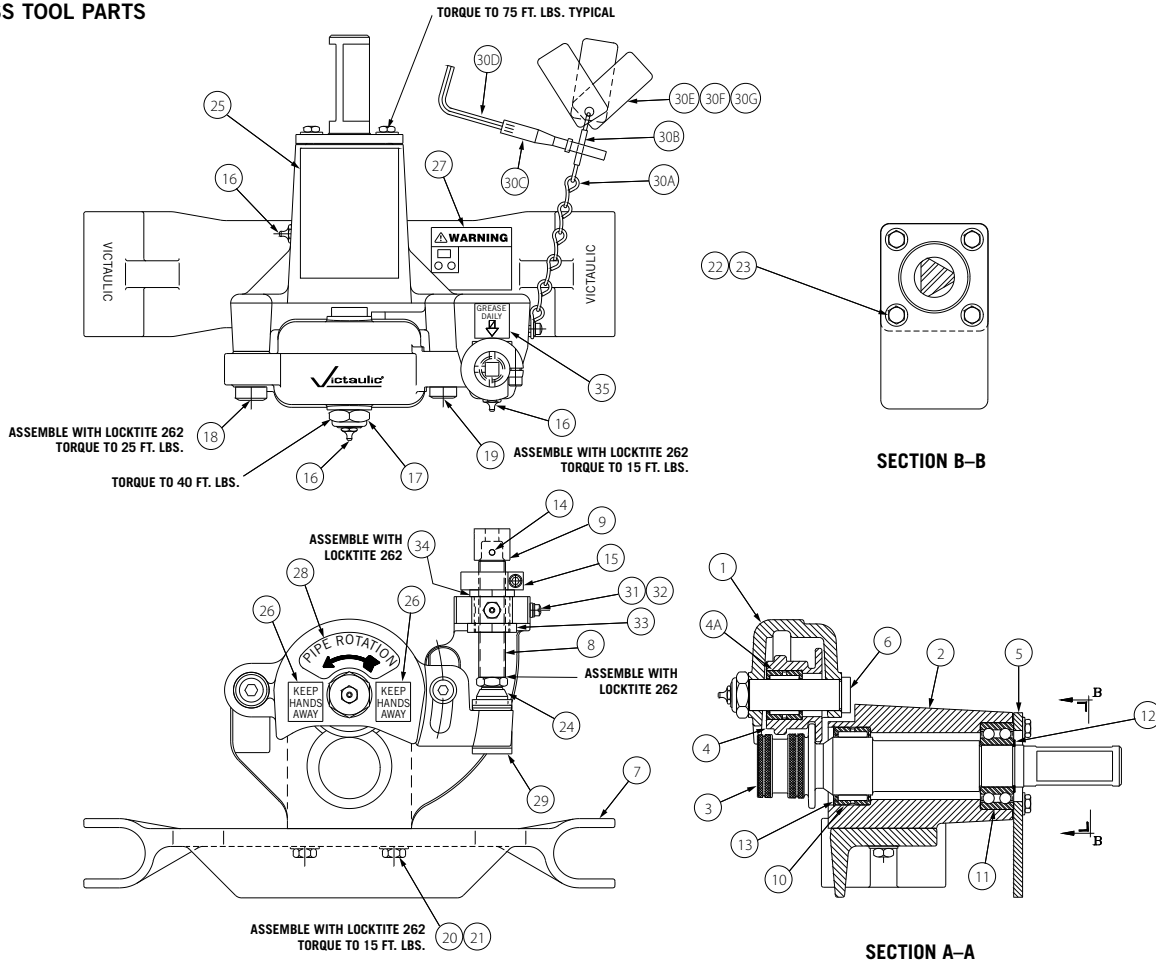
Item #	Part #	Qty.	Description
1	R-015-226-MCH	1	Roll Arm
2	R-013-226-MCH	1	Body
3	R-902-226-L06	1	Lower Roll, Steel
4	R-902-226-U06	1	Upper Roll, Steel
4A	N-B02-087-001	1	Bearing
5	R-005-226-PLT	1	Bearing Retainer
6	R-022-226-MCH	1	Upper Roll Shaft
7	R-016-226-PLT	1	Torque Arm
8	R-017-226-MCH	1	Ram Shaft
9	R-018-226-MCH	1	Drive Socket
10	N-B02-162-001	1	Bearing
11	N-B01-118-001	1	Bearing, 20° - 30° contact angle and 1 seal 30 mm I.D. x 62 mm O.D. x 23.8 mm wide
12	N-T03-000-009	1	Snap Ring
13	N-T03-000-008	1	Snap Ring
14	N-P08-000-100	1	Shear Pin, 0.156 x 1.00 Long
15	R-021-226-MCH	1	Locking Collar
16	N-M01-000-002	3	Straight Grease Fitting, 1/8" NPT
17	N-N14-120-000	1	3/4" - 16 UNF Nylon Insert Locknut Thin (.391/.421 Thick)
18	R-019-226-MCH	1	Socket Shoulder Screw
19	R-020-226-MCH	1	Socket Shoulder Screw
20	N-S01-060-100	2	3/8" - 16 UNC x 1.00 Lg. Hex Hd. Cap Screw, Pltd.

Item #	Part #	Qty.	Description
21	N-W01-060-000	2	Washer, 3/8" SAE, Pltd.
22	N-S01-040-012	4	1/4" - 20 UNC x .75 Lg. Hex Hd. Cap Screw, Pltd.
23	N-W06-040-000	4	Washer .25 SAE, Pltd.
24	R-018-106-MCH	1	Toggle Pad
25	R-035-226-LBL	1	Label - Steel Groove Specifications
26	R-027-226-LBL	2	Label - Keep Hands Away
27	R-028-226-LBL	1	Label - Warning Read Instructions
28	R-026-226-LBL	1	Label - Pipe Rotation
29	R-019-226-PLT	1	Roll Arm Lifter
30	R-030-226-0FS	1	Groove Depth Gauge Assembly
30A	N-M09-000-005	.5	Chain
30B	N-M40-000-001	1	Chain Connector
30C	N-E90-000-065	1	Hex Key Holder
30D	N-M14-000-002	1	3/16" Hex Key
30E	R-056-226-PLT	1	Gauge, 2 1/2" - 3"
30F	R-057-226-PLT	1	Gauge, 4" - 6"
30G	R-060-226-PLT	1	Gauge, 2"
31	N-S12-010-008	1	10 - 24 UNC x .50 Lg. Slotted Fillister Hd. Mch. Screw, Pltd.
32	N-W06-010-000	1	Washer #10 SAE, Pltd.
33	R-048-226-MCH	1	Body Insert
34	R-046-226-MCH	1	Body Nut
35	R-049-226-LBL	1	Label - Grease Daily

Roll Grooving Tool

VE226

VE226MSS TOOL PARTS



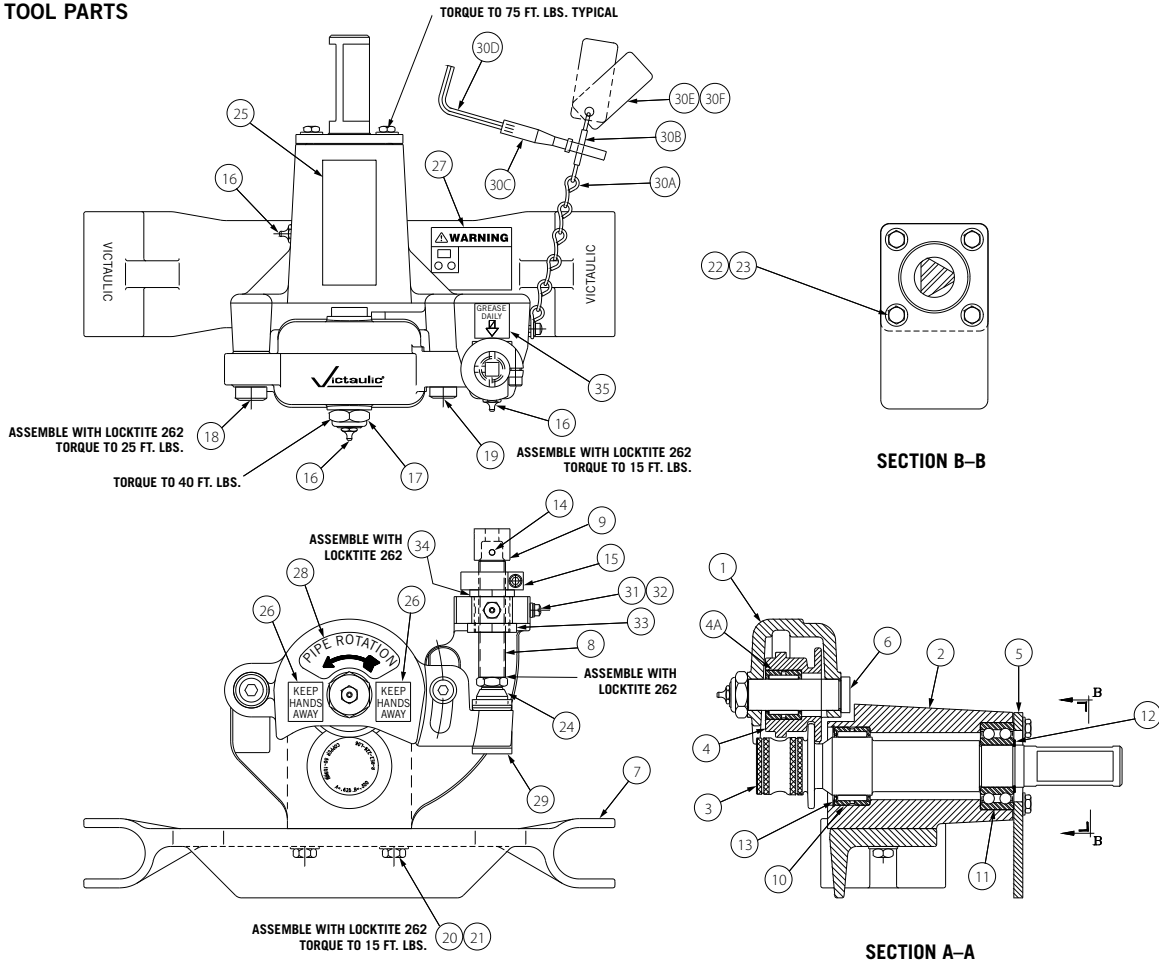
Item #	Part #	Qty.	Description
1	R-015-226-MCH	1	Roll Arm
2	R-013-226-MCH	1	Body
3	R-X02-226-L06	1	Lower Roll, Stainless Steel
4	R-X02-226-U06	1	Upper Roll, Stainless Steel
4A	N-B02-087-001	1	Bearing
5	R-005-226-PLT	1	Bearing Retainer
6	R-022-226-MCH	1	Upper Roll Shaft
7	R-016-226-PLT	1	Torque Arm
8	R-017-226-MCH	1	Ram Shaft
9	R-018-226-MCH	1	Drive Socket
10	N-B02-162-001	1	Bearing
11	N-B01-118-001	1	Bearing, 20° - 30° contact angle and 1 seal 30 mm I.D. x 62 mm O.D. x 23.8 mm wide
12	N-T03-000-009	1	Snap Ring
13	N-T03-000-008	1	Snap Ring
14	N-P08-000-100	1	Shear Pin, 0.156 x 1.00 Long
15	R-021-226-MCH	1	Locking Collar
16	N-M01-000-002	3	Straight Grease Fitting, 1/8" - NPT
17	N-N14-120-000	1	3/4 - 16 UNF Nylon Insert Locknut Thin (.391/.421 Thick)
18	R-019-226-MCH	1	Socket Shoulder Screw
19	R-020-226-MCH	1	Socket Shoulder Screw
20	N-S01-060-100	2	3/8 - 16 UNC x 1.00 Lg. Hex Hd. Cap Screw, Pltd.

Item #	Part #	Qty.	Description
21	N-W01-060-000	2	Washer, 3/8" SAE, Pltd.
22	N-S01-040-012	4	1/4 - 20 UNC x .75 Lg. Hex Hd. Cap Screw, Pltd.
23	N-W06-040-000	4	Washer .25 SAE, Pltd.
24	R-018-106-MCH	1	Toggle Pad
25	R-035-226-LBL	1	Label - Steel Groove Specifications
26	R-027-226-LBL	2	Label - Keep Hands Away
27	R-028-226-LBL	1	Label - Warning Read Instructions
28	R-026-226-LBL	1	Label - Pipe Rotation
29	R-019-226-PLT	1	Roll Arm Lifter
30	R-030-226-0FS	1	Groove Depth Gauge Assembly
30A	N-M09-000-005	.5	Chain
30B	N-M40-000-001	1	Chain Connector
30C	N-E90-000-065	1	Hex Key Holder
30D	N-M14-000-002	1	3/16" Hex Key
30E	R-056-226-PLT	1	Gauge, 2 1/2 - 3"
30F	R-057-226-PLT	1	Gauge, 4 - 6"
30G	R-060-226-PLT	1	Gauge, 2"
31	N-S12-010-008	1	10 - 24 UNC x .50 Lg. Slotted Fillister Hd. Mch. Screw, Pltd.
32	N-W06-010-000	1	Washer #10 SAE, Pltd.
33	R-048-226-MCH	1	Body Insert
34	R-046-226-MCH	1	Body Nut
35	R-049-226-LBL	1	Label - Grease Daily

Roll Grooving Tool

VE226

VE226AC TOOL PARTS



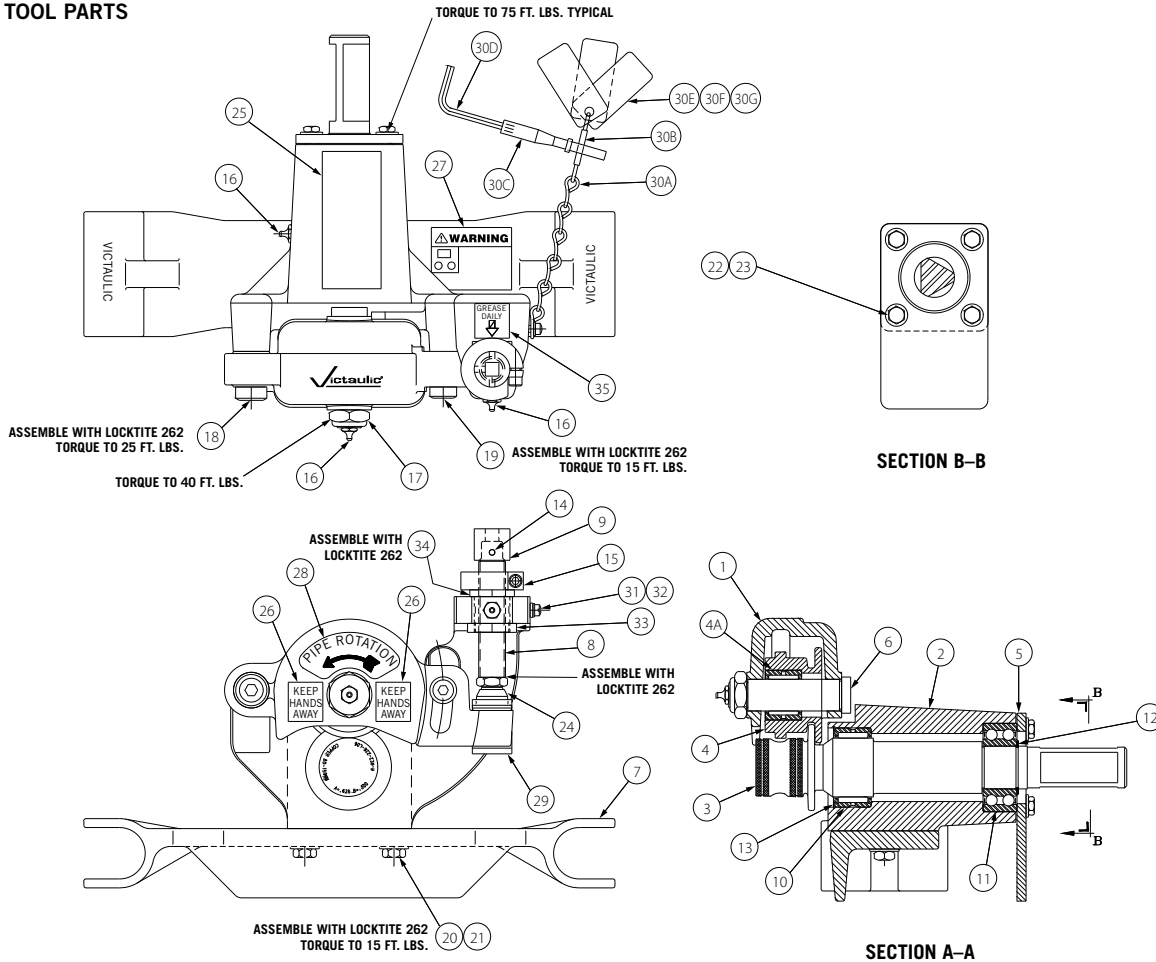
Item #	Part #	Qty.	Description
1	R-015-226-MCH	1	Roll Arm
2	R-013-226-MCH	1	Body
3	R-RE2-226-L06	1	Lower Roll, Copper
4	R-RE2-226-U06	1	Upper Roll, Copper
4A	N-B02-087-001	1	Bearing
5	R-005-226-PLT	1	Bearing Retainer
6	R-022-226-MCH	1	Upper Roll Shaft
7	R-016-226-PLT	1	Torque Arm
8	R-017-226-MCH	1	Ram Shaft
9	R-018-226-MCH	1	Drive Socket
10	N-B02-162-001	1	Bearing
11	N-B01-118-001	1	Bearing, 20° - 30° contact angle and 1 seal 30 mm I.D. x 62 mm O.D. x 23.8 mm wide
12	N-T03-000-009	1	Snap Ring
13	N-T03-000-008	1	Snap Ring
14	N-P08-000-100	1	Shear Pin, 0.156 x 1.00 Long
15	R-021-226-MCH	1	Locking Collar
16	N-M01-000-002	3	Straight Grease Fitting, 1/8" NPT
17	N-N14-120-000	1	3/4" - 16 UNF Nylon Insert Locknut Thin (.391/421 Thick)
18	R-019-226-MCH	1	Socket Shoulder Screw
19	R-020-226-MCH	1	Socket Shoulder Screw
20	N-S01-060-100	2	3/8" - 16 UNC x 1.00 Lg. Hex Hd. Cap Screw, Pltd.

Item #	Part #	Qty.	Description
21	N-W01-060-000	2	Washer, 3/8" SAE, Pltd.
22	N-S01-040-012	4	1/4" - 20 UNC x .75 Lg. Hex Hd. Cap Screw, Pltd.
23	N-W06-040-000	4	Washer .25 SAE, Pltd.
24	R-018-106-MCH	1	Toggle Pad
25	R-LAB-000-015	1	Label - Australian Copper Groove Specifications
26	R-027-226-LBL	2	Label - Keep Hands Away
27	R-028-226-LBL	1	Label - Warning Read Instructions
28	R-026-226-LBL	1	Label - Pipe Rotation
29	R-019-226-PLT	1	Roll Arm Lifter
30	R-030-226-0FS	1	Groove Depth Gauge Assembly
30A	N-M09-000-005	.5	Chain
30B	N-M40-000-001	1	Chain Connector
30C	N-E90-000-065	1	Hex Key Holder
30D	N-M14-000-002	1	3/16" Hex Key
30E	R-064-226-0FS	1	Gauge, 50 - 100mm
30F	R-065-226-0FS	1	Gauge, 125 - 150mm
31	N-S12-010-008	1	10 - 24 UNC x .50 Lg. Slotted Fillister Hd. Mch. Screw, Pltd.
32	N-W06-010-000	1	Washer #10 SAE, Pltd.
33	R-048-226-MCH	1	Body Insert
34	R-046-226-MCH	1	Body Nut
35	R-049-226-LBL	1	Label - Grease Daily

Roll Grooving Tool

VE226

VE226EC TOOL PARTS



Item #	Part #	Qty.	Description
1	R-015-226-MCH	1	Roll Arm
2	R-013-226-MCH	1	Body
3	R-RE2-226-L06	1	Lower Roll, Copper
4	R-RE2-226-U06	1	Upper Roll, Copper
4A	N-B02-087-001	1	Bearing
5	R-005-226-PLT	1	Bearing Retainer
6	R-022-226-MCH	1	Upper Roll Shaft
7	R-016-226-PLT	1	Torque Arm
8	R-017-226-MCH	1	Ram Shaft
9	R-018-226-MCH	1	Drive Socket
10	N-B02-162-001	1	Bearing
11	N-B01-118-001	1	Bearing, 20° - 30° contact angle and 1 seal 30 mm I.D. x 62 mm O.D. x 23.8 mm wide
12	N-T03-000-009	1	Snap Ring
13	N-T03-000-008	1	Snap Ring
14	N-P08-000-100	1	Shear Pin, 0.156 x 1.00 Long
15	R-021-226-MCH	1	Locking Collar
16	N-M01-000-002	3	Straight Grease Fitting, 1/8" - NPT
17	N-N14-120-000	1	3/4 - 16 UNF Nylon Insert Locknut Thin (.391/.421 Thick)
18	R-019-226-MCH	1	Socket Shoulder Screw
19	R-020-226-MCH	1	Socket Shoulder Screw
20	N-S01-060-100	2	3/8 - 16 UNC x 1.00 Lg. Hex Hd. Cap Screw, Pltd.

Item #	Part #	Qty.	Description
21	N-W01-060-000	2	Washer, 3/8" SAE, Pltd.
22	N-S01-040-012	4	1/4 - 20 UNC x .75 Lg. Hex Hd. Cap Screw, Pltd.
23	N-W06-040-000	4	Washer .25 SAE, Pltd.
24	R-018-106-MCH	1	Toggle Pad
25	R-LAB-000-016	1	Label - EN 1057 Copper Groove Specifications
26	R-027-226-LBL	2	Label - Keep Hands Away
27	R-028-226-LBL	1	Label - Warning Read Instructions
28	R-026-226-LBL	1	Label - Pipe Rotation
29	R-019-226-PLT	1	Roll Arm Lifter
30	R-030-226-OFS	1	Groove Depth Gauge Assembly
30A	N-M09-000-005	.5	Chain
30B	N-M40-000-001	1	Chain Connector
30C	N-E90-000-065	1	Hex Key Holder
30D	N-M14-000-002	1	3/16" Hex Key
30E	R-066-226-OFS	1	Gauge, 54,0 - 76,1 mm
30F	R-067-226-OFS	1	Gauge, 88,9 - 108,0 mm
30G	R-068-226-OFS	1	Gauge, 133,0 - 159,0 mm
31	N-S12-010-008	1	10 - 24 UNC x .50 Lg. Slotted Fillister Hd. Mch. Screw, Pltd.
32	N-W06-010-000	1	Washer #10 SAE, Pltd.
33	R-048-226-MCH	1	Body Insert
34	R-046-226-MCH	1	Body Nut
35	R-049-226-LBL	1	Label - Grease Daily

Roll Grooving Tool

VE226

NOTE

Victaulic® Factory Representatives and Distributor Stocks Worldwide.

Victaulic reserves the right to change product specifications, designs and standard equipment without notice and without obligation.

WORLD HEADQUARTERS

P.O. Box 31
Easton, PA 18044-0031 USA

4901 Kesslersville Road
Easton, PA 18040 USA

1-800-PICK-VIC (1-800-742-5842)
1-610-559-3300
1-610-250-8817 (fax)
pickvic@victaulic.com

UNITED STATES

1-800-PICK-VIC (1-800-742-5842)
1-610-250-8817 (fax)
pickvic@victaulic.com

CANADA

905-884-7444
905-884-9774 (fax)
viccanada@victaulic.com

EUROPE

32-9-381-15-00
32-9-380-44-38 (fax)
viceuro@victaulic.be

UK

44 (0) 1438741100
44 (0) 1438313883 (fax)
viceuro@victaulic.be

CENTRAL AND SOUTH AMERICA

1-610-559-3300
1-610-559-3608 (fax)
vical@victaulic.com

ASIA PACIFIC

86-21-58855151
86-21-58851298 (fax)
vicap@victaulic.com

MIDDLE EAST

971-4-883-88-70
971-4-883-88-60 (fax)

www.victaulic.com



WCAS-6K3P2H

UPDATED 2/06

RP-VE226 3200 REV B RPL0226000

VICTAULIC IS A REGISTERED TRADEMARK OF VICTAULIC COMPANY. © 2006 VICTAULIC COMPANY. ALL RIGHTS RESERVED. PRINTED IN THE USA.

RP-VE226_10

