

Protective solutions

Applications

HPO Fire and Blast Doors are designed for protection of access ways against the effects of vapor and dust cloud explosions and fire. The HPO Doors are applied in shielding of industrial facilities, such as O&G platforms and refineries or related buildings against destructive blast forces and fire.

Specification

Supplier of HPO Doors is Temet Oy, Helsinki Finland.

The advanced sandwich structure of Temet HPO Fire and Blast Door withstands vapor cloud explosions up to 1 bar (14,5 psi) peak pressure.

Fire resistance of HPO Door is fire tested and approved as EI₂ 45 and E 60 according to the new European standard EN 1634-1.

The HPO Fire and Blast Door is equipped with user friendly handle which operates a dedicated latching system closing the door to the frame from all sides, at the same time preventing latch breaks due to misuse.

The door makes high security access points simple to build, saving both space and money.

HPO- Door accessories

The HPO Doors are equipped with the following standard equipment, but can also be supplied with optional accessories according to customer specification:

Standard equipment:

- Door leaves made of galvanized or zinc-coated steel plate.
- Screw-fastening frame with cover lists, made of galvanized steel.
- Surface treatment; primed. Several colour options available
- Lift-up steel hinges
- Fittings for lock cylinder
- Reinforcements for door closer and puller
- Cover caps for fastening holes
- Panic bar or handle inside and handle on outside

Optional accessories:

- Kick plates
- Different types of door closers
- Various types of surface finishing
- Door seals for weather-proofing

Test Reports

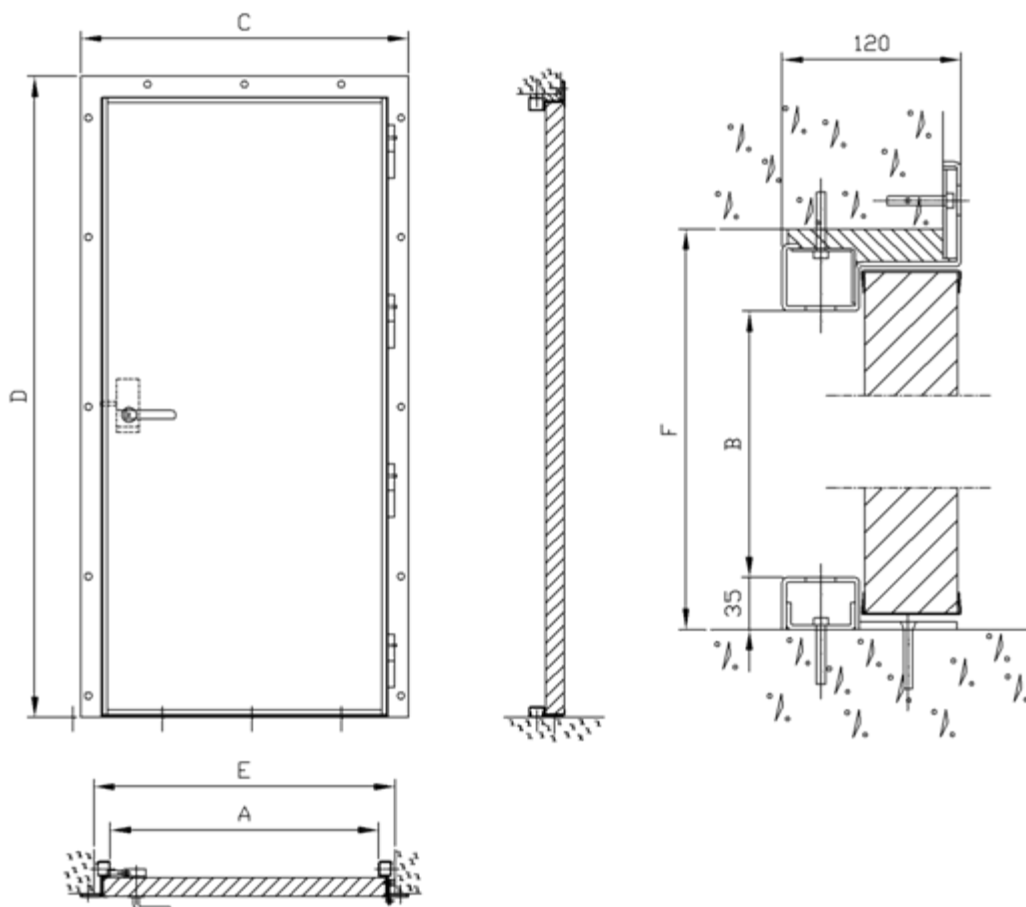
VTT Technical Research Centre of Finland test reports for both blast and fire testing are available upon request.



Temet HPO Fire and Blast Door

HPO Door dimensions

The door is manufactured in stock sizes of 900 x 2000 mm and 1200 x 2000 mm (approx. 3 x 6.5 ft and 4 x 6.5 ft) of free door opening and is also available tailored to customer's specifications.



Door type	Dimensions [mm]					
	Clear opening		Frame outer dimensions		Opening in wall	
	A	B	C	D	E	F
HPO-900x2000	900	2000	1100	2150	1010	2090
HPO-1200x2000	1200	2000	1400	2150	1310	2090

Design - Production – Installation – Maintenance - Consultation